

Genoa: 7001126 Alec-2 Headsail.des

Design Info
=====

Design File:
\\NAS\Engineering files\Queenie-Customer Order\Fareast Sails\2023 Order\Need to be Confirmed\7001126 Alec\7001

Initial Design Date: 6/12/2023
Boat:

Comments:

Client:

Design Data
=====

Genoa

Measurements

Luff geodesic:	15.150m
Leech geodesic:	14.330m
Foot geodesic:	5.970m
Headboard width:	0.040m
Luff perpendicular (HLP):	5.657m
Upper width (HUW):	0.618m
Three-quarter width (HTW):	1.229m
Half width (HHW):	2.583m
Quarter width (HQW):	4.078m
Foot median:	14.611m
ORC Headsail area:	40.868m?
IRC Headsail area:	40.759m?
Surface area:	41.027m?
Forestay height:	16.200m
J:	4.600m

Draft Stripes

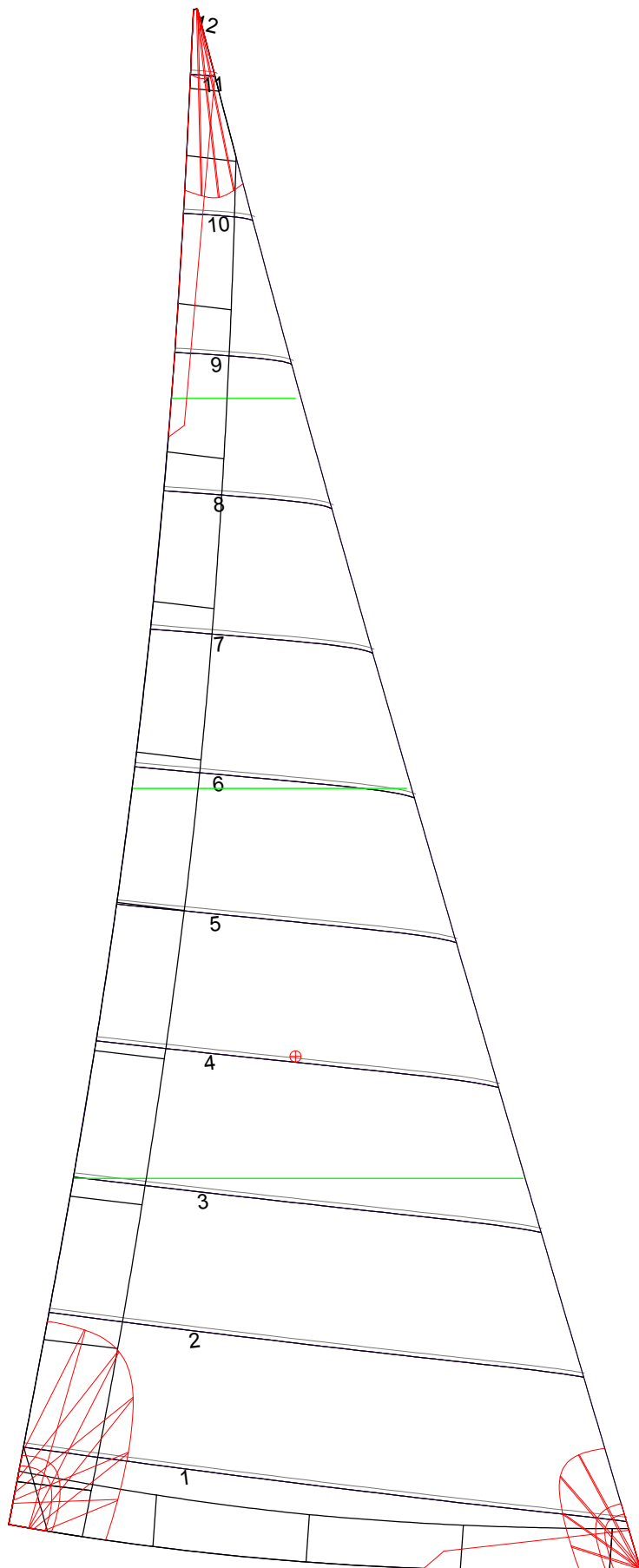
1, Luff: 3.803m ; Leech: 3.306m ;
2, Luff: 7.605m ; Leech: 6.988m ;
3, Luff: 11.393m ; Leech: 10.635m ;

Luff Curve

15.147m,	0.000m
13.888m,	0.051m
12.496m,	0.093m
11.271m,	0.114m
9.846m,	0.122m
7.538m,	0.107m
4.923m,	0.073m
2.560m,	0.036m
0.000m,	0.000m

Fanned Luff (@ 5.00% [0.295m])		Before BSeam
100% (15.148m) :	-0.000m	0.000m
90% (13.632m) :	-0.054m	-0.015m
80% (12.120m) :	-0.094m	-0.019m
70% (10.604m) :	-0.115m	-0.013m
60% (9.089m) :	-0.119m	0.000m
50% (7.574m) :	-0.110m	0.014m
40% (6.059m) :	-0.094m	0.025m
30% (4.544m) :	-0.073m	0.029m
20% (3.030m) :	-0.050m	0.028m
10% (1.514m) :	-0.026m	0.019m
0% (0.000m) :	0.000m	0.000m

Genoa: 7001126 Alec-2 Headsail.des



Seam Allowances

Zone:	Split	Radial	Cross
Zone: 1	0.040m	0.040m	0.040m
Cover 1	0.025m	0.025m	0.025m
Cover 2	0.025m	0.025m	0.025m
Cover 3	0.000m	0.000m	0.000m
Cover 4	0.000m	0.000m	0.000m

Edge Excesses

Sail:	Luff	Leech	Foot
Sail:	0.000m	0.000m	0.000m
Cover 0	0.070m	0.100m	0.070m
Cover 1	0.070m	0.070m	0.100m
Cover 2	0.000m	0.070m	0.070m
Cover 3	0.000m	0.070m	0.070m

Total Seam Lengths (m)

Horizontal	31.45
Radial/Vertical	0.00
Bi-Radial Split	0.00

Materials

Material	Area (m ²)	Panels
Material 1	41.14	1,2,3,4,5 6,7,8,9,10 11,12