

Mainsail: 7001122 Walter MainsailV3.des

Design Info
=====

Design File:
\\NAS\Engineering files\Queenie-Customer Order\Fareast Sails\2023 Order\Need to be Confrimed\7001122 Walter\7001122 Walter MainsailV3.des

Initial Design Date: 29/11/2023
Boat:

Comments:

Client:

Design Data
=====

Main

Measurements

Luff geodesic:	36.631Ft
Leech geodesic:	38.261Ft
Foot geodesic:	11.667Ft
Head geodesic:	0.443Ft
Upper width (MUW):	2.354Ft
Three-quarter width (MTW):	4.254Ft
Half width (MHW):	7.417Ft
Quarter width (MQW):	9.834Ft
Foot median:	37.362Ft
ORC Mainsail area:	252.399Ft?
Surface area:	258.611Ft?
Clew height:	0.328Ft
Mast rake:	0.000Ft

Battens

Position	Length	Roach	Angle	Luff	Leech	Full
80.000%	3.690Ft	0.755Ft	74.315?	29.290Ft	30.507Ft	Full
60.000%	6.422Ft	1.075Ft	74.315?	21.970Ft	22.880Ft	Full
40.000%	8.569Ft	0.964Ft	74.315?	14.652Ft	15.254Ft	Full
20.000%	10.300Ft	0.595Ft	74.315?	7.335Ft	7.627Ft	Full

Reefing Points

1, Luff: 3.479Ft ; Leech: 3.568Ft ; Offset: 0.000Ft ; Number Eyelets: 3

Draft Stripes

1, Luff: 12.085Ft ; Leech: 12.156Ft ;
2, Luff: 24.172Ft ; Leech: 24.753Ft ;

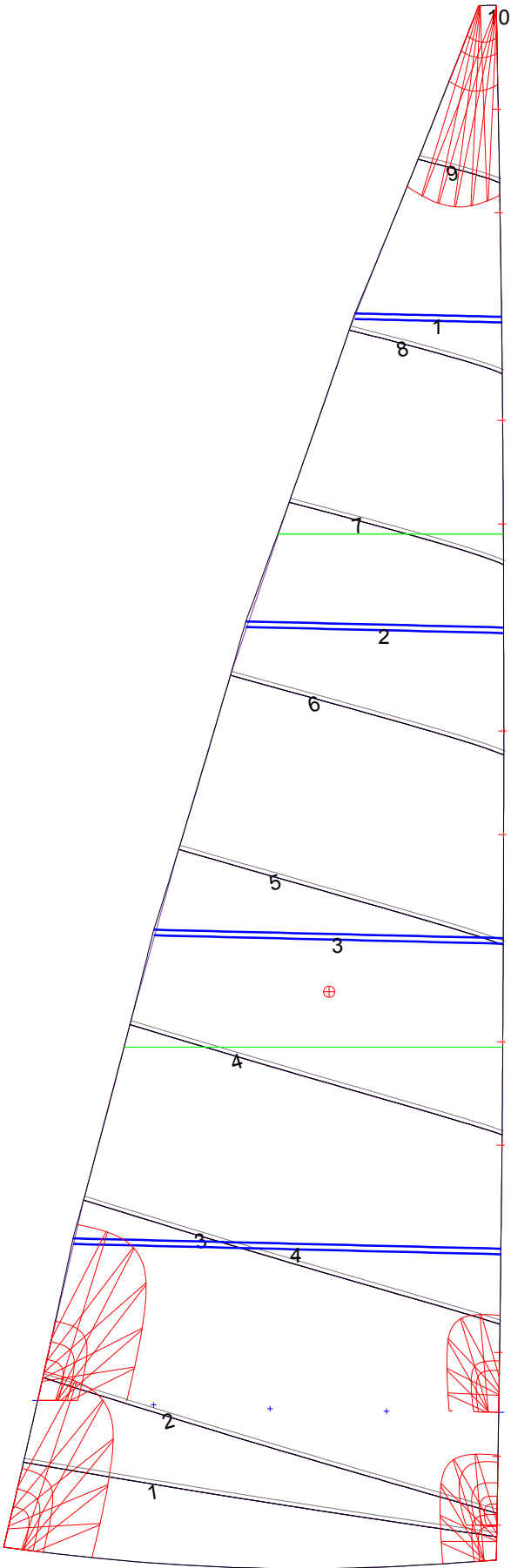
Luff Slides

1, Position: 2.444Ft
2, Position: 4.888Ft
3, Position: 9.772Ft
4, Position: 12.211Ft
5, Position: 17.090Ft
6, Position: 19.530Ft
7, Position: 24.411Ft
8, Position: 26.851Ft
9, Position: 31.738Ft
10, Position: 34.184Ft

Luff Curve

		Fanned Luff (@ 5.00% [0.580Ft])	Before BSeam
36.629Ft,	0.000Ft	100% (36.630Ft) :	0.000Ft
32.065Ft,	-0.085Ft	90% (32.968Ft) :	0.126Ft
27.472Ft,	-0.145Ft	80% (29.304Ft) :	0.244Ft
22.868Ft,	-0.171Ft	70% (25.642Ft) :	0.327Ft
18.314Ft,	-0.174Ft	60% (21.978Ft) :	0.370Ft
13.648Ft,	-0.161Ft	50% (18.315Ft) :	0.377Ft
9.157Ft,	-0.129Ft	40% (14.652Ft) :	0.351Ft
4.565Ft,	-0.073Ft	30% (10.989Ft) :	0.294Ft
0.000Ft,	0.000Ft	20% (7.326Ft) :	0.214Ft
		10% (3.663Ft) :	0.113Ft
		0% (0.000Ft) :	0.000Ft

Mainsail: 7001122 Walter MainsailV3.des



Seam Allowances			
	Split	Radial	Cross
Zone: 1	0.098Ft	0.098Ft	0.098Ft

Edge Excesses			
Sail:	Luff	Leech	Foot
	0.000Ft	0.000Ft	0.000Ft

Total Seam Lengths (Ft)

Horizontal	69.47
Radial/Vertical	0.00
Bi-Radial Split	0.00

Materials

Material	Area (Ft²)	Panels
Material 1	258.68	1,2,3,4,5 6,7,8,9,10