

Mainsail: 7001122 Walter Mainsail.des

Design Info
=====

Design File:
\\NAS\Engineering files\Queenie-Customer Order\Fareast Sails\2023 Order\Need to be Confirmed\7001122 Walter\7001122 Walter

Initial Design Date: 29/11/2023
Boat:

Comments:

Client:

Design Data
=====

Main

Measurements

Luff geodesic:	11.165m
Leech geodesic:	11.612m
Foot geodesic:	3.520m
Head geodesic:	0.115m
Upper width (MUW):	0.712m
Three-quarter width (MTW):	1.284m
Half width (MHW):	2.229m
Quarter width (MQW):	2.954m
Foot median:	11.383m
ORC Mainsail area:	23.141m ²
Surface area:	23.696m ²
Clew height:	0.100m
Mast rake:	0.000m

Battens

Position	Length	Roach	Angle	Luff	Leech	Full
82.000%	1.026m	0.230m	74.410°	9.151m	9.494m	Full
62.000%	1.859m	0.328m	74.410°	6.920m	7.178m	Full
42.000%	2.514m	0.294m	74.410°	4.689m	4.863m	Full
22.000%	3.043m	0.181m	74.410°	2.458m	2.547m	Full

Reefing Points

1, Luff: 1.060m ; Leech: 1.089m ; Offset: 0.000m ; Number Eyelets: 3

Draft Stripes

1, Luff: 3.683m ; Leech: 3.707m ;
2, Luff: 7.368m ; Leech: 7.540m ;

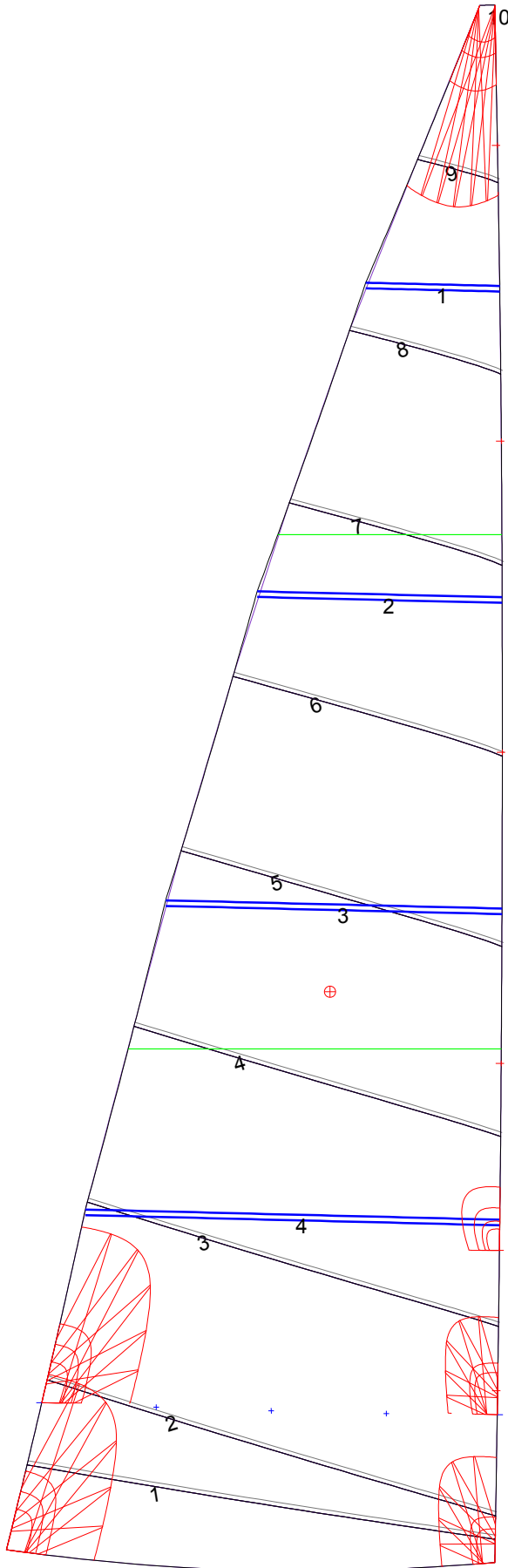
Luff Slides

1, Position: 1.232m
2, Position: 3.578m
3, Position: 5.808m
4, Position: 8.038m
5, Position: 10.159m

Luff Curve

		Fanned Luff (@ 5.00% [0.175m])	Before BSeam
11.165m,	0.000m	100% (11.165m) :	0.000m
9.773m,	-0.026m	90% (10.049m) :	0.038m
8.374m,	-0.044m	80% (8.932m) :	0.073m
6.970m,	-0.052m	70% (7.816m) :	0.099m
5.582m,	-0.053m	60% (6.699m) :	0.111m
4.160m,	-0.049m	50% (5.583m) :	0.114m
2.791m,	-0.039m	40% (4.466m) :	0.106m
1.391m,	-0.022m	30% (3.349m) :	0.089m
0.000m,	0.000m	20% (2.233m) :	0.065m
		10% (1.117m) :	0.034m
		0% (0.000m) :	0.000m

Mainsail: 7001122 Walter Mainsail.des



Seam Allowances			
Zone: 1	Split	Radial	Cross
	0.030m	0.030m	0.030m

Edge Excesses			
Sail:	Luff	Leech	Foot
	0.000m	0.000m	0.000m

Total Seam Lengths (m)

Horizontal	20.91
Radial/Vertical	0.00
Bi-Radial Split	0.00

Materials

Material	Area (m ²)	Panels
Material 1	23.70	1,2,3,4,5 6,7,8,9,10