

Genoa: 7001119 Mike-1 Heavy Jib.des

Design Info
=====

Design File:
\\NAS\Engineering files\Queenie-Customer Order\Fareast Sails\2023 Order\Need to be Confirmed\7001119 Mike\7001

Initial Design Date: 25/11/2023
Boat:

Comments:

Client:

Design Data
=====

Genoa

Measurements

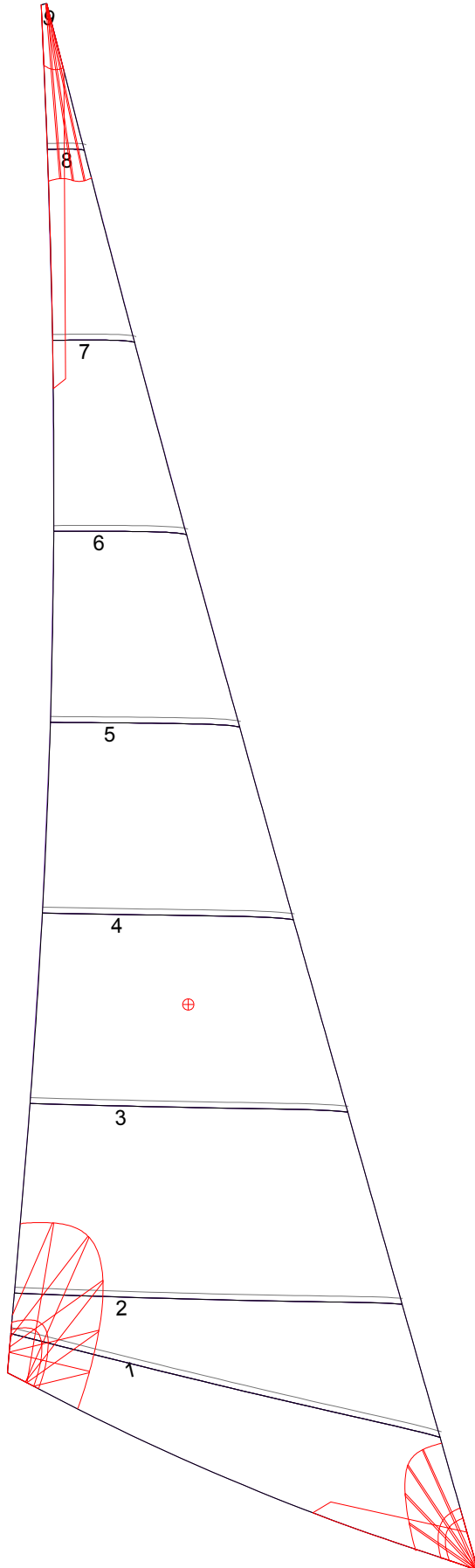
Luff geodesic: 11.088m
Leech geodesic: 9.376m
Foot geodesic: 3.501m
Headboard width: 0.040m
Luff perpendicular (HLP): 2.790m
Upper width (HUW): 0.310m
Three-quarter width (HTW): 0.597m
Half width (HHW): 1.246m
Quarter width (HQW): 1.987m
Foot median: 10.197m
ORC Headsail area: 14.624m?
IRC Headsail area: 14.585m?
Surface area: 14.805m?
Forestay height: 11.260m
J: 3.100m

Luff Curve

11.087m, 0.000m
10.165m, 0.028m
9.146m, 0.050m
8.250m, 0.062m
7.207m, 0.066m
5.517m, 0.058m
3.603m, 0.040m
1.874m, 0.020m
0.000m, 0.000m

Fanned Luff (@ 5.00% [0.161m])
100% (11.087m) : -0.000m -0.000m
90% (9.979m) : -0.034m -0.011m
80% (8.870m) : -0.058m -0.016m
70% (7.761m) : -0.070m -0.014m
60% (6.652m) : -0.072m -0.007m
50% (5.544m) : -0.066m 0.001m
40% (4.435m) : -0.055m 0.009m
30% (3.326m) : -0.042m 0.013m
20% (2.218m) : -0.029m 0.013m
10% (1.108m) : -0.015m 0.009m
0% (0.000m) : 0.000m 0.000m

Genoa: 7001119 Mike-1 Heavy Jib.des



Seam Allowances			
Zone: 1	Split	Radial	Cross
	0.040m	0.040m	0.040m

Edge Excesses			
Sail:	Luff	Leech	Foot
	0.000m	0.000m	0.000m

Total Seam Lengths (m)

Horizontal	13.03
Radial/Vertical	0.00
Bi-Radial Split	0.00

Materials

Material	Area (m ²)	Panels
Material 1	14.80	1,2,3,4,5 6,7,8,9