

Mainsail: 7001117 Ciro Lock Crowther 42.5 Catamaran Sq top Mainsail.de

Design Info
=====

Design File:
\\NAS\Engineering files\Queenie-Customer Order\Fareast Sails\2023 Order\Need to be Confirmed\7001117 Ciro\7001117

Initial Design Date: 21/11/2023
Boat:

Comments:

Client:

Design Data
=====

Main

Measurements

Luff geodesic:	43.389Ft
Leech geodesic:	45.743Ft
Foot geodesic:	15.508Ft
Head geodesic:	5.000Ft
Upper width (MUW):	6.227Ft
Three-quarter width (MTW):	8.789Ft
Half width (MHW):	11.751Ft
Quarter width (MQW):	13.837Ft
Foot median:	44.424Ft
ORC Mainsail area:	480.420Ft?
Surface area:	501.276Ft?
Clew height:	0.328Ft
Mast rake:	0.000Ft

Battens

Position	Length	Roach	Angle	Luff	Leech	Full
100.000%	5.997Ft	0.000Ft	107.863?	40.169Ft	45.424Ft	Full
90.748%	7.143Ft	0.893Ft	82.486?	38.669Ft	41.222Ft	Full
78.152%	9.131Ft	1.343Ft	79.505?	33.537Ft	35.500Ft	Full
64.365%	10.676Ft	1.328Ft	78.696?	27.703Ft	29.237Ft	Full
49.757%	12.052Ft	1.156Ft	78.696?	21.410Ft	22.602Ft	Full
34.062%	13.302Ft	0.843Ft	78.696?	14.652Ft	15.472Ft	Full
17.588%	14.425Ft	0.447Ft	78.696?	7.560Ft	7.989Ft	Full

Reefing Points

- 1, Luff: 5.290Ft ; Leech: 5.380Ft ; Offset: 0.000Ft ; Number Eyelets: 0
- 2, Luff: 11.925Ft ; Leech: 12.116Ft ; Offset: 0.000Ft ; Number Eyelets: 0
- 3, Luff: 19.515Ft ; Leech: 19.816Ft ; Offset: 0.000Ft ; Number Eyelets: 0

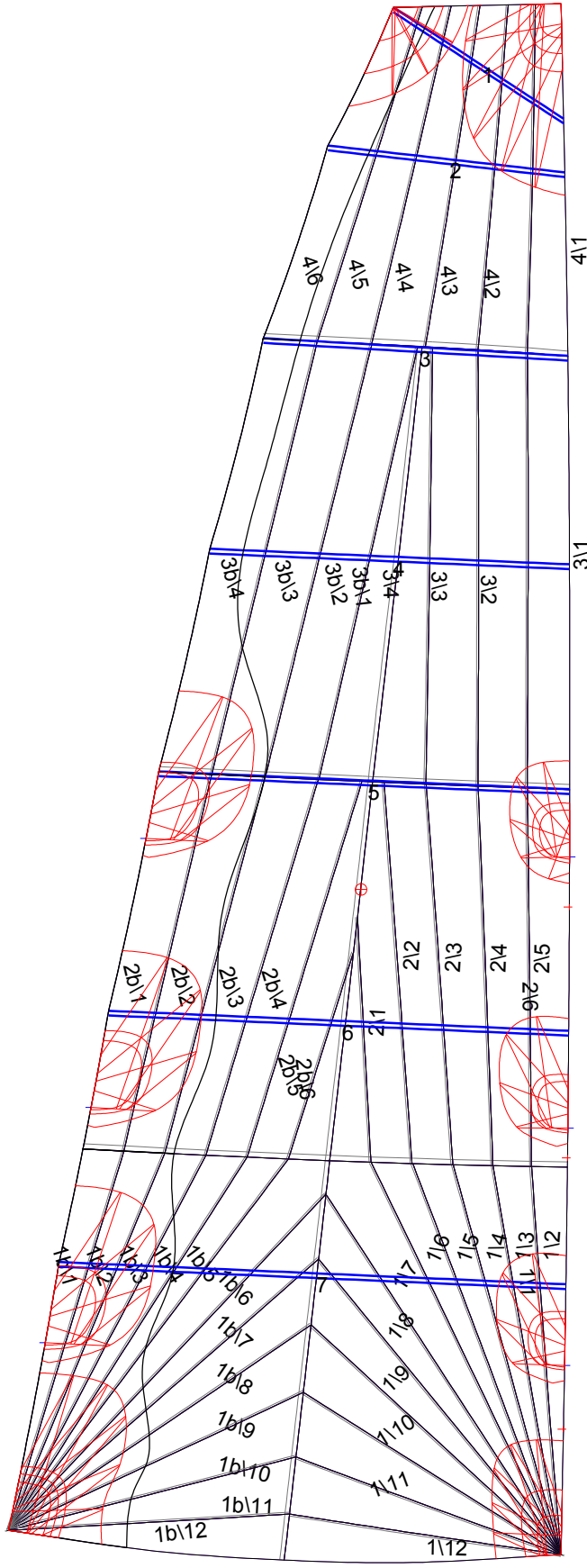
Luff Slides

- 1, Position: 3.507Ft
- 2, Position: 11.096Ft
- 3, Position: 18.114Ft

Luff Curve

		Fanned Luff (@ 5.00% [0.773Ft])	Before BSeam
43.387Ft,	0.000Ft	100% (43.389Ft) :	0.000Ft
37.980Ft,	-0.118Ft	90% (39.052Ft) :	0.063Ft
32.540Ft,	-0.202Ft	80% (34.711Ft) :	0.116Ft
27.087Ft,	-0.238Ft	70% (30.373Ft) :	0.147Ft
21.693Ft,	-0.243Ft	60% (26.034Ft) :	0.158Ft
16.166Ft,	-0.225Ft	50% (21.695Ft) :	0.156Ft
10.847Ft,	-0.180Ft	40% (17.356Ft) :	0.146Ft
5.407Ft,	-0.102Ft	30% (13.017Ft) :	0.125Ft
0.000Ft,	0.000Ft	20% (8.677Ft) :	0.091Ft
		10% (4.340Ft) :	0.044Ft
		0% (0.000Ft) :	0.000Ft

Mainsail: 7001117 Ciro Lock Crowther 42.5 Catamaran Sq top Mainsail.de



Seam Allowances

Zone:	Split	Radial	Cross
Zone: 1/a	0.125Ft	0.052Ft	0.148Ft
Zone: 1/b	0.125Ft	0.052Ft	0.148Ft
Zone: 2/a	0.125Ft	0.052Ft	0.148Ft
Zone: 2/b	0.125Ft	0.052Ft	0.148Ft
Zone: 3/a	0.125Ft	0.052Ft	0.148Ft
Zone: 3/b	0.125Ft	0.052Ft	0.148Ft
Zone: 4	0.125Ft	0.052Ft	0.148Ft
Cover 1	0.148Ft	0.148Ft	0.148Ft

Edge Excesses

	Luff	Leech	Foot
Sail:	0.000Ft	0.000Ft	0.000Ft
Cover 0	0.000Ft	0.000Ft	0.000Ft

Total Seam Lengths (Ft)

Horizontal	35.07
Radial/Vertical	460.76
Bi-Radial Split	35.40

Materials

Material	Area (Ft ²)	Panels
Material 1	501.21	1\1, 1\2, 1\3, 1\4, 1\5 1\6, 1\7, 1\8, 1\9, 1\10 1\11, 1\12, 1b\1, 1b\2, 1b\3 1b\4, 1b\5, 1b\6, 1b\7, 1b\8 1b\9, 1b\10, 1b\11, 1b\12, 2\6 2\5, 2\4, 2\3, 2\2, 2\1 2b\6, 2b\5, 2b\4, 2b\3, 2b\2 2b\1, 3\1, 3\2, 3\3, 3\4 3b\1, 3b\2, 3b\3, 3b\4, 4\1 4\2, 4\3, 4\4, 4\5, 4\6