

Genoa: 7001110 Graham Staysail.des

Design Info
=====

Design File:
\\NAS\Engineering files\Queenie-Customer Order\Fareast Sails\2023 Order\Need to be Confirmed\7001110 Graham7

Initial Design Date: 14/11/2023
Boat:

Comments:

Client:

Design Data
=====

Genoa

Measurements

Luff geodesic: 11.404m
Leech geodesic: 10.713m
Foot geodesic: 2.914m
Headboard width: 0.030m
Luff perpendicular (HLP): 2.727m
Upper width (HUW): 0.295m
Three-quarter width (HTW): 0.578m
Half width (HHW): 1.220m
Quarter width (HQW): 1.947m
Foot median: 11.032m
ORC Headsail area: 14.693m?
IRC Headsail area: 14.649m?
Surface area: 14.671m?
Forestay height: 11.430m
J: 3.030m

Luff Curve

11.403m, 0.000m
10.455m, 0.029m
9.407m, 0.052m
8.485m, 0.064m
7.412m, 0.068m
5.674m, 0.060m
3.706m, 0.041m
1.927m, 0.020m
0.000m, 0.000m

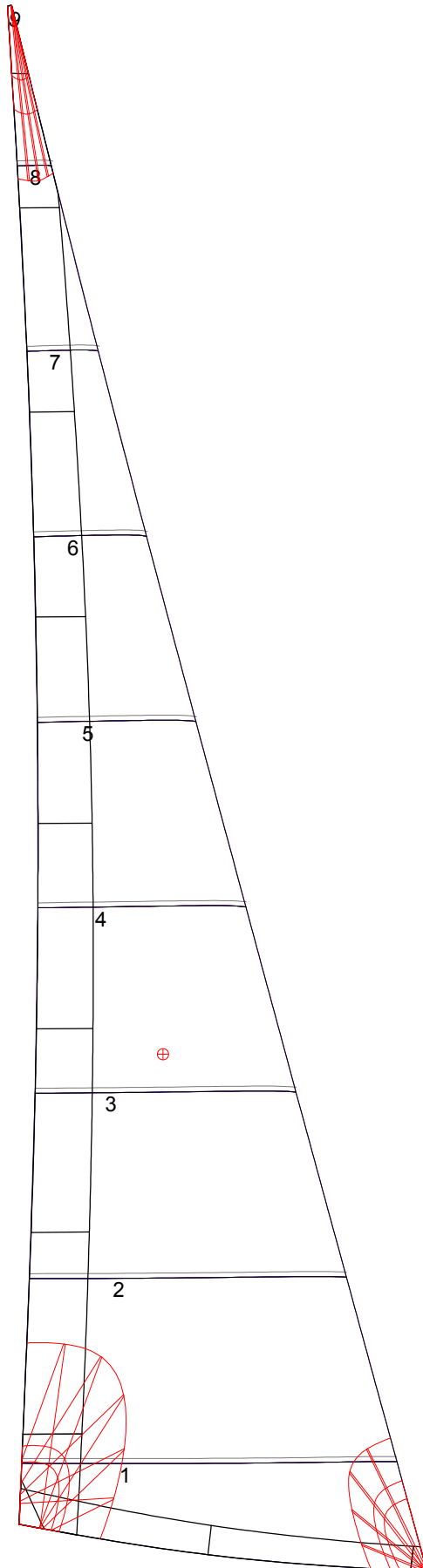
Fanned Luff (@ 5.00% [0.143m])

100% (11.403m) : 0.000m
90% (10.262m) : -0.031m
80% (9.123m) : -0.053m
70% (7.982m) : -0.064m
60% (6.842m) : -0.066m
50% (5.702m) : -0.061m
40% (4.561m) : -0.051m
30% (3.421m) : -0.040m
20% (2.281m) : -0.027m
10% (1.140m) : -0.014m
0% (0.000m) : 0.000m

Before BSeam

0.000m
-0.011m
-0.016m
-0.014m
-0.008m
0.000m
0.007m
0.010m
0.011m
0.008m
0.000m

Genoa: 7001110 Graham Staysail.des



Seam Allowances

	Split	Radial	Cross
Zone: 1	0.035m	0.035m	0.035m
Cover 1	0.025m	0.025m	0.025m
Cover 2	0.025m	0.025m	0.025m
Cover 3	0.000m	0.000m	0.000m
Cover 4	0.000m	0.000m	0.000m

Edge Excesses

	Luff	Leech	Foot
Sail:	0.000m	0.000m	0.000m
Cover 0	0.070m	0.100m	0.070m
Cover 1	0.070m	0.070m	0.100m
Cover 2	0.000m	0.070m	0.070m
Cover 3	0.000m	0.070m	0.070m

Total Seam Lengths (m)

Horizontal	11.24
Radial/Vertical	0.00
Bi-Radial Split	0.00

Materials

Material	Area (m ²)	Panels
Material 1	14.72	1,2,3,4,5 6,7,8,9