

Mainsail: 7001109 David MainsailV1.des

Design Info
=====

Design File:
\\NAS\Engineering files\Queenie-Customer Order\Fareast Sails\2023 Order\Need to be Confirmed\7001109 David\700

Initial Design Date: 10/11/2023
Boat:

Comments:

Client:

Design Data
=====

Main

Measurements

Luff geodesic:	12.771m
Leech geodesic:	13.248m
Foot geodesic:	4.257m
Head geodesic:	0.115m
Upper width (MUW):	0.831m
Three-quarter width (MTW):	1.522m
Half width (MHW):	2.666m
Quarter width (MQW):	3.554m
Foot median:	12.991m
ORC Mainsail area:	31.716m?
Surface area:	32.491m?
Clew height:	0.100m
Mast rake:	0.000m

Battens

Position	Length	Roach	Angle	Luff	Leech	Full
83.333%	1.129m	0.251m	74.836?	10.634m	11.004m	Full
66.667%	2.009m	0.380m	74.836?	8.506m	8.803m	Full
50.000%	2.705m	0.364m	74.836?	6.378m	6.602m	Full
33.333%	3.316m	0.300m	74.836?	4.252m	4.402m	Full
16.667%	3.815m	0.162m	74.836?	2.125m	2.201m	Full

Reefing Points

1, Luff: 1.582m ; Leech: 1.620m ; Offset: 0.000m ; Number Eyelets: 3
2, Luff: 3.510m ; Leech: 3.592m ; Offset: 0.000m ; Number Eyelets: 3
3, Luff: 5.744m ; Leech: 5.885m ; Offset: 0.000m ; Number Eyelets: 2

Draft Stripes

1, Luff: 3.127m ; Leech: 3.011m ;
2, Luff: 6.319m ; Leech: 6.333m ;
3, Luff: 9.575m ; Leech: 9.767m ;

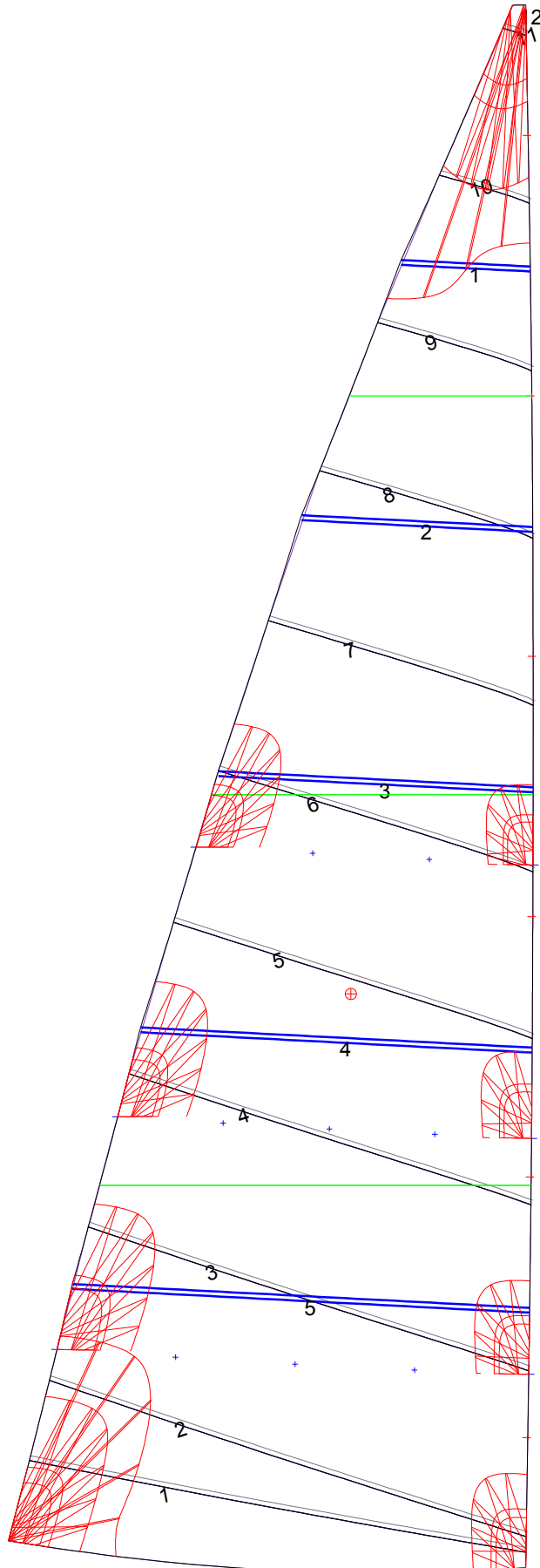
Luff Slides

1, Position: 1.066m
2, Position: 3.195m
3, Position: 5.321m
4, Position: 7.448m
5, Position: 9.575m
6, Position: 11.705m

Luff Curve

		Fanned Luff (@ 5.00% [0.211m])	Before BSeam
12.771m,	0.000m	100% (12.771m) :	0.000m
11.179m,	-0.029m	90% (11.494m) :	0.018m
9.578m,	-0.051m	80% (10.217m) :	0.033m
7.973m,	-0.060m	70% (8.940m) :	0.042m
6.385m,	-0.061m	60% (7.663m) :	0.045m
4.758m,	-0.056m	50% (6.386m) :	0.045m
3.193m,	-0.045m	40% (5.108m) :	0.042m
1.591m,	-0.025m	30% (3.831m) :	0.036m
0.000m,	0.000m	20% (2.554m) :	0.026m
		10% (1.277m) :	0.013m
		0% (0.000m) :	0.000m

Mainsail: 7001109 David MainsailV1.des



Seam Allowances			
Zone: 1	Split	Radial	Cross
	0.040m	0.040m	0.040m

Edge Excesses			
Sail:	Luff	Leech	Foot
	0.000m	0.000m	0.000m

Total Seam Lengths (m)

Horizontal	28.46
Radial/Vertical	0.00
Bi-Radial Split	0.00

Materials

Material	Area (m ²)	Panels
Material 1	32.51	1,2,3,4,5 6,7,8,9,10 11,12