

Genoa: 7001107 Niels Grand Soliel 52 JibV1.des

Design Info
=====

Design File:
\\NAS\Engineering files\Queenie-Customer Order\Fareast Sails\2023 Order\Need to be Confirmed\7001107 Niels\7001

Initial Design Date: 12/12/2023
Boat:

Comments:

Client:

Design Data
=====

Genoa

Measurements

Luff geodesic:	20.110m
Leech geodesic:	18.675m
Foot geodesic:	6.863m
Headboard width:	0.055m
Luff perpendicular (HLP):	6.400m
Upper width (HUW):	0.701m
Three-quarter width (HTW):	1.382m
Half width (HHW):	2.898m
Quarter width (HQW):	4.592m
Foot median:	19.255m
ORC Headsail area:	61.154m?
IRC Headsail area:	61.002m?
Surface area:	61.171m?
Forestay height:	21.350m
J:	6.400m

Draft Stripes

1, Luff: 5.043m ; Leech: 4.184m ;
2, Luff: 10.086m ; Leech: 9.013m ;
3, Luff: 15.114m ; Leech: 13.815m ;

Luff Curve

20.108m,	0.000m
18.437m,	0.050m
16.589m,	0.090m
14.962m,	0.111m
13.071m,	0.119m
10.006m,	0.104m
6.535m,	0.071m
3.399m,	0.035m
0.000m,	0.000m

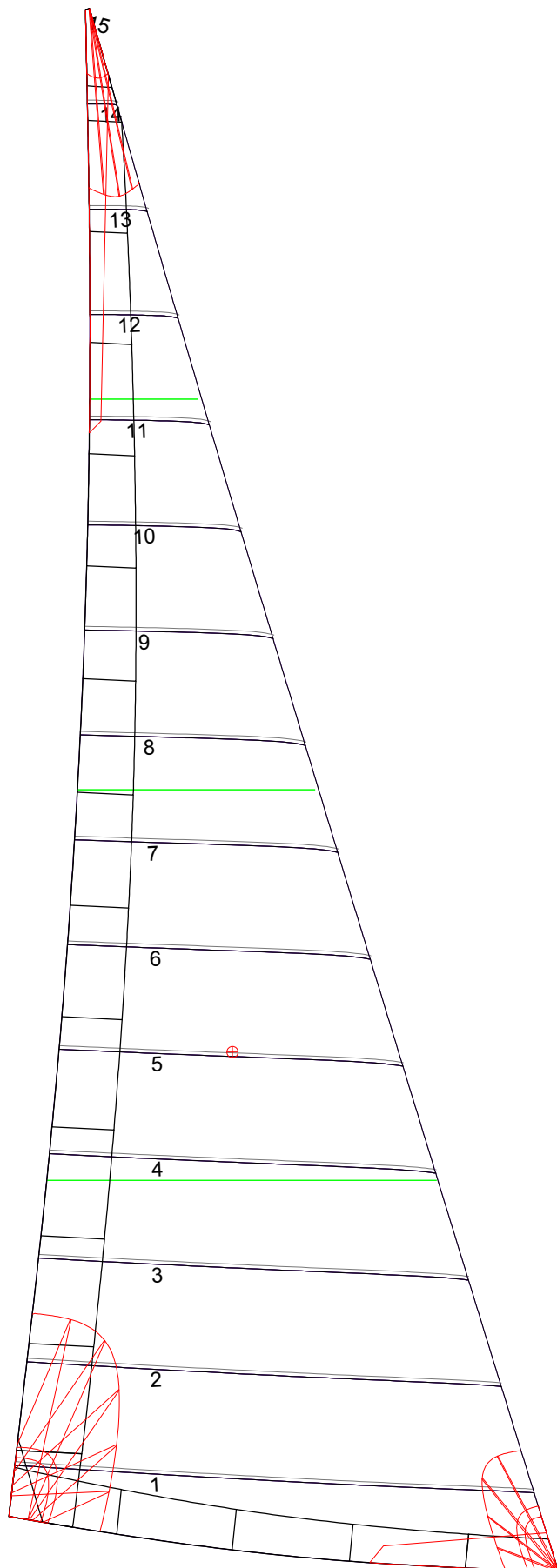
Fanned Luff (@ 5.00% [0.338m])

100% (20.108m) :	0.000m
90% (18.097m) :	-0.052m
80% (16.088m) :	-0.091m
70% (14.076m) :	-0.111m
60% (12.065m) :	-0.115m
50% (10.054m) :	-0.107m
40% (8.044m) :	-0.091m
30% (6.032m) :	-0.071m
20% (4.022m) :	-0.049m
10% (2.010m) :	-0.026m
0% (0.000m) :	0.000m

Before BSeam

0.000m
-0.008m
-0.007m
0.002m
0.017m
0.032m
0.042m
0.044m
0.040m
0.027m
0.000m

Genoa: 7001107 Niels Grand Soliel 52 JibV1.des



Seam Allowances

Zone:	Split	Radial	Cross
Zone: 1	0.045m	0.045m	0.045m
Cover 1	0.025m	0.025m	0.025m
Cover 2	0.025m	0.025m	0.025m
Cover 3	0.000m	0.000m	0.000m
Cover 4	0.000m	0.000m	0.000m

Edge Excesses

Sail:	Luff	Leech	Foot
Sail:	0.000m	0.000m	0.000m
Cover 0	0.070m	0.100m	0.070m
Cover 1	0.070m	0.070m	0.100m
Cover 2	0.000m	0.070m	0.070m
Cover 3	0.000m	0.070m	0.070m

Total Seam Lengths (m)

Horizontal	45.89
Radial/Vertical	0.00
Bi-Radial Split	0.00

Materials

Material	Area (m ²)	Panels
Material 1	61.32	1,2,3,4,5 6,7,8,9,10 11,12,13,14,15