

Genoa: 7001107 Niels Grand Soliel 52 Jib.des

Design Info
=====

Design File:
\\NAS\Engineering files\Queenie-Customer Order\Fareast Sails\2023 Order\Need to be Confirmed\7001107 Niels\7001

Initial Design Date: 12/12/2023
Boat:

Comments:

Client:

Design Data
=====

Genoa

Measurements

Luff geodesic:	19.800m
Leech geodesic:	18.384m
Foot geodesic:	6.862m
Headboard width:	0.055m
Luff perpendicular (HLP):	6.400m
Upper width (HUW):	0.701m
Three-quarter width (HTW):	1.382m
Half width (HHW):	2.898m
Quarter width (HQW):	4.592m
Foot median:	18.950m
ORC Headsail area:	60.212m?
IRC Headsail area:	60.063m?
Surface area:	60.232m?
Forestay height:	21.350m
J:	6.400m

Draft Stripes

1, Luff: 4.966m ; Leech: 4.113m ;
2, Luff: 9.931m ; Leech: 8.870m ;
3, Luff: 14.882m ; Leech: 13.598m ;

Luff Curve

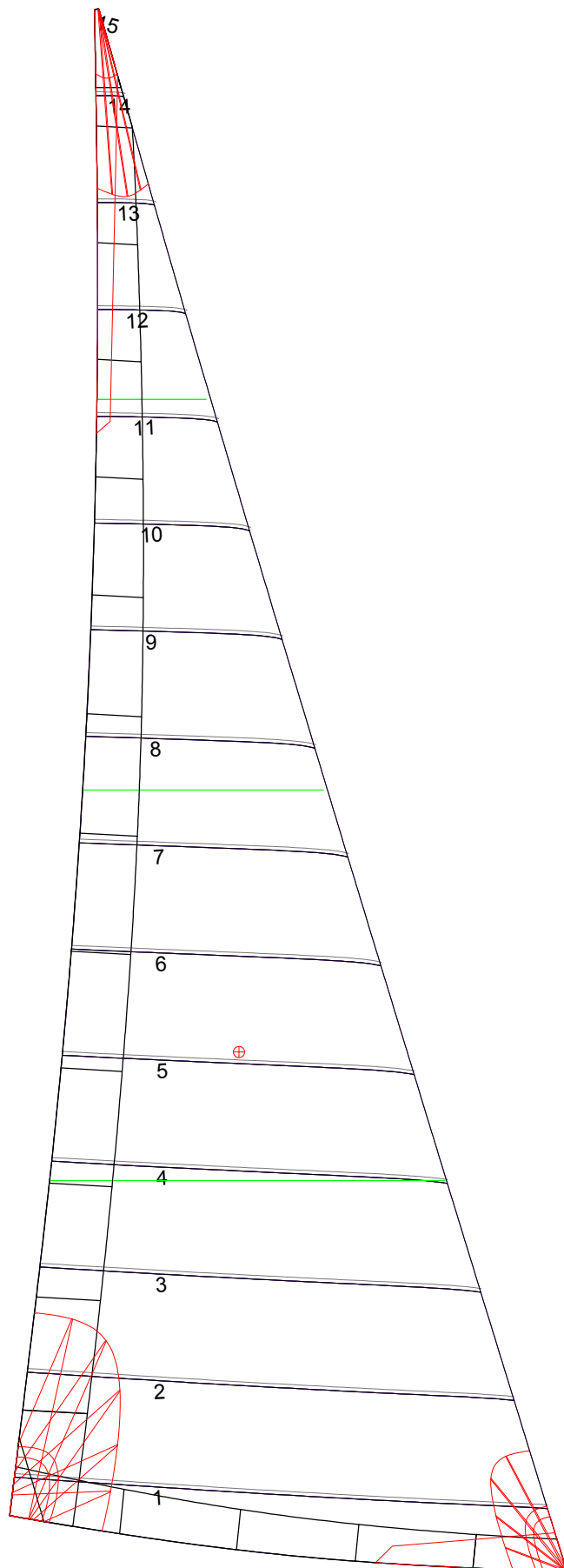
19.798m,	0.000m
18.153m,	0.050m
16.333m,	0.090m
14.732m,	0.111m
12.869m,	0.119m
9.852m,	0.104m
6.434m,	0.071m
3.346m,	0.035m
0.000m,	0.000m

Fanned Luff (@ 5.00% [0.338m])

100% (19.798m) :	0.000m	-0.000m
90% (17.818m) :	-0.052m	-0.008m
80% (15.840m) :	-0.091m	-0.008m
70% (13.859m) :	-0.111m	0.002m
60% (11.879m) :	-0.116m	0.017m
50% (9.899m) :	-0.107m	0.032m
40% (7.920m) :	-0.092m	0.042m
30% (5.939m) :	-0.072m	0.044m
20% (3.960m) :	-0.049m	0.040m
10% (1.979m) :	-0.026m	0.027m
0% (0.000m) :	0.000m	0.000m

Before BSeam

Genoa: 7001107 Niels Grand Soliel 52 Jib.des



Seam Allowances

Zone:	Split	Radial	Cross
Zone: 1	0.045m	0.045m	0.045m
Cover 1	0.025m	0.025m	0.025m
Cover 2	0.025m	0.025m	0.025m
Cover 3	0.000m	0.000m	0.000m
Cover 4	0.000m	0.000m	0.000m

Edge Excesses

Sail:	Luff	Leech	Foot
Sail:	0.000m	0.000m	0.000m
Cover 0	0.070m	0.100m	0.070m
Cover 1	0.070m	0.070m	0.100m
Cover 2	0.000m	0.070m	0.070m
Cover 3	0.000m	0.070m	0.070m

Total Seam Lengths (m)

Horizontal	46.15
Radial/Vertical	0.00
Bi-Radial Split	0.00

Materials

Material	Area (m ²)	Panels
Material 1	60.38	1,2,3,4,5 6,7,8,9,10 11,12,13,14,15