

# Mainsail: 7001104 Tim-1 Scanmar 10 MainsailV1.des

Design Info  
=====

Design File:  
\\NAS\Engineering files\Queenie-Customer Order\Fareast Sails\2023 Order\Need to be Confirmed\7001104 Tim\70011

Initial Design Date: 14/11/2023  
Boat:

Comments:

Client:

Design Data  
=====

Main

## Measurements

Luff geodesic: 12.300m  
Leech geodesic: 12.340m  
Foot geodesic: 3.700m  
Head geodesic: 0.115m  
Upper width (MUW): 0.732m  
Three-quarter width (MTW): 1.322m  
Half width (MHW): 2.309m  
Quarter width (MQW): 3.073m  
Foot median: 12.311m  
ORC Mainsail area: 26.500m?  
Surface area: 26.879m?  
Clew height: 0.508m  
Mast rake: 0.000m

## Battens

Position	Length	Roach	Angle	Luff	Leech	Full
82.000%	1.055m	0.208m	80.756?	10.070m	10.091m	Full
62.000%	1.919m	0.282m	80.756?	7.615m	7.630m	Full
42.000%	2.616m	0.249m	80.756?	5.164m	5.169m	Full
22.000%	3.174m	0.143m	80.756?	2.718m	2.707m	Full

## Reefing Points

1, Luff: 2.000m ; Leech: 2.156m ; Offset: 0.000m ; Number Eyelets: 0  
2, Luff: 4.450m ; Leech: 4.711m ; Offset: 0.000m ; Number Eyelets: 0

## Draft Stripes

1, Luff: 4.047m ; Leech: 3.660m ;  
2, Luff: 8.105m ; Leech: 7.874m ;

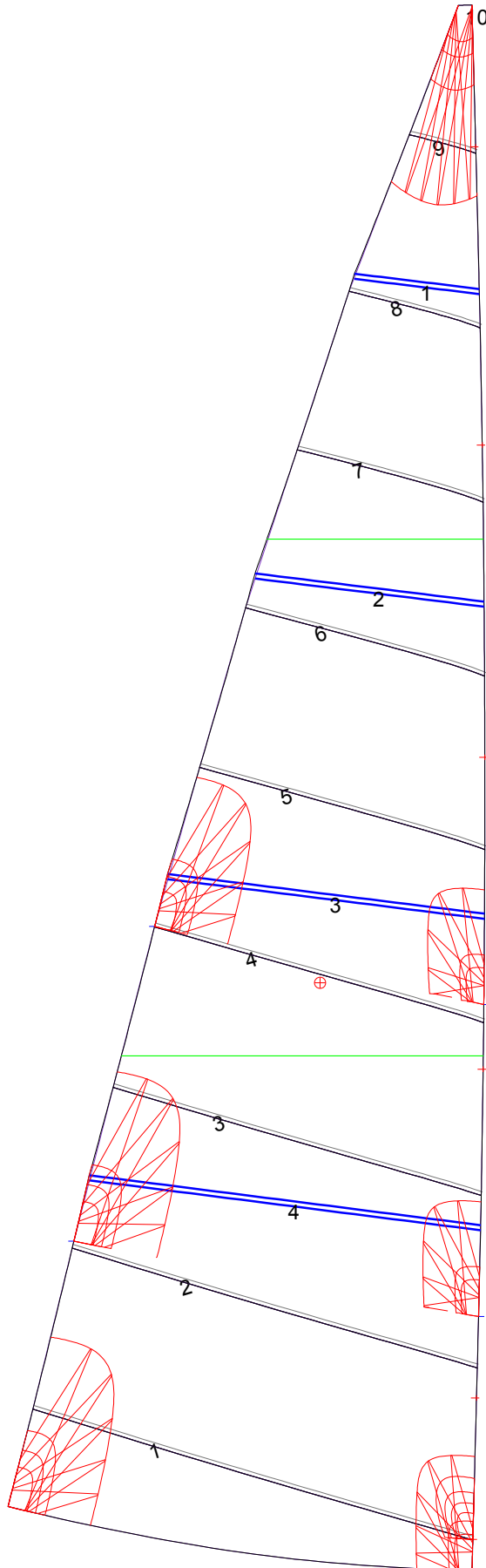
## Luff Slides

1, Position: 1.360m  
2, Position: 3.943m  
3, Position: 6.391m  
4, Position: 8.843m  
5, Position: 11.185m

## Luff Curve

		Fanned Luff (@ 5.00% [0.182m])	Before BSeam
12.299m,	0.000m	100% (12.300m) :	0.000m
9.224m,	-0.075m	90% (11.071m) :	0.024m
6.149m,	-0.100m	80% (9.839m) :	0.047m
3.075m,	-0.075m	70% (8.610m) :	0.063m
0.000m,	0.000m	60% (7.380m) :	0.071m
		50% (6.150m) :	0.074m
		40% (4.920m) :	0.071m
		30% (3.690m) :	0.061m
		20% (2.459m) :	0.045m
		10% (1.231m) :	0.022m
		0% (0.000m) :	0.000m

# Mainsail: 7001104 Tim-1 Scanmar 10 MainsailV1.des



Seam Allowances			
Zone:	Split	Radial	Cross
1	0.030m	0.030m	0.030m

Edge Excesses			
Sail:	Luff	Leech	Foot
	0.000m	0.000m	0.000m

**Total Seam Lengths (m)**

Horizontal	20.71
Radial/Vertical	0.00
Bi-Radial Split	0.00

**Materials**

Material	Area (m <sup>2</sup> )	Panels
Material 1	26.90	1,2,3,4,5 6,7,8,9,10