

Mainsail: 7001104 Tim-1 Scanmar 10 Mainsail.des

Design Info
=====

Design File:
\\NAS\Engineering files\Queenie-Customer Order\Fareast Sails\2023 Order\Need to be Confirmed\7001104 Tim\70011

Initial Design Date: 14/11/2023
Boat:

Comments:

Client:

Design Data
=====

Main

Measurements

Luff geodesic: 12.300m
 Leech geodesic: 12.340m
 Foot geodesic: 3.700m
 Head geodesic: 0.115m
 Upper width (MUW): 0.731m
 Three-quarter width (MTW): 1.321m
 Half width (MHW): 2.307m
 Quarter width (MQW): 3.068m
 Foot median: 12.106m
 ORC Mainsail area: 26.473m?
 Surface area: 26.149m?
 Clew height: 0.506m
 Mast rake: 0.000m

Battens

Position	Length	Roach	Angle	Luff	Leech	Full
82.000%	1.054m	0.208m	80.756?	10.070m	10.091m	Full
62.000%	1.917m	0.282m	80.756?	7.615m	7.630m	Full
42.000%	2.612m	0.249m	80.756?	5.165m	5.169m	Full
22.000%	3.169m	0.143m	80.756?	2.718m	2.707m	Full

Reefing Points

1, Luff: 2.000m ; Leech: 2.157m ; Offset: 0.000m ; Number Eyelets: 0
 2, Luff: 4.450m ; Leech: 4.712m ; Offset: 0.000m ; Number Eyelets: 0

Draft Stripes

1, Luff: 4.047m ; Leech: 3.662m ;
 2, Luff: 8.105m ; Leech: 7.875m ;

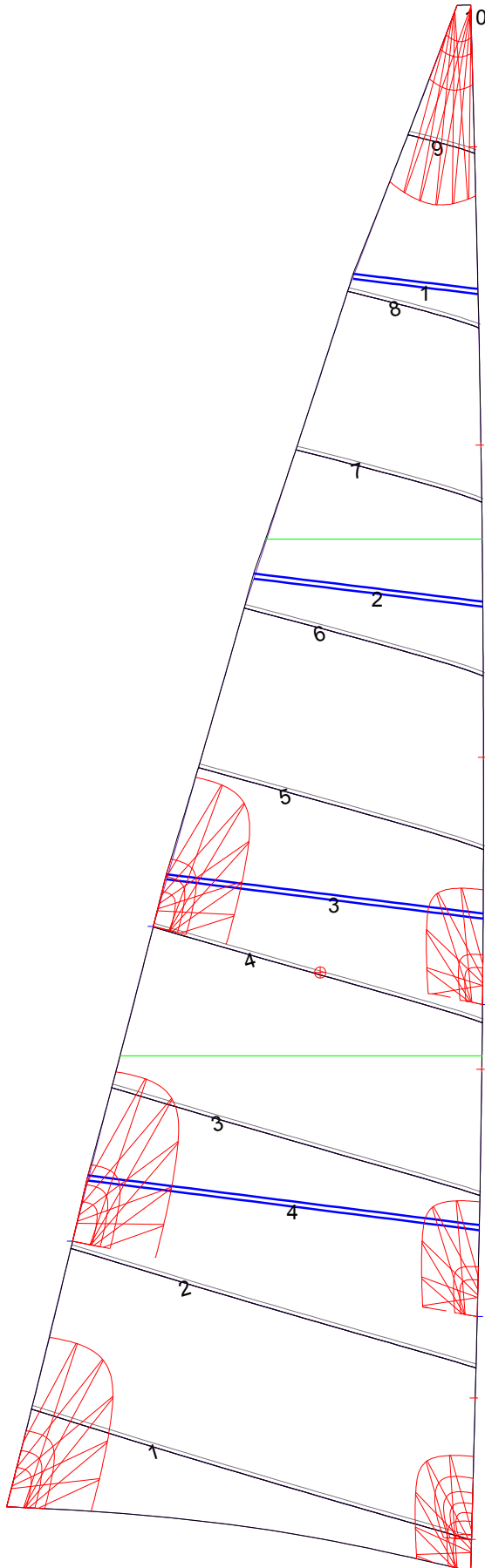
Luff Slides

1, Position: 1.360m
 2, Position: 3.943m
 3, Position: 6.391m
 4, Position: 8.843m
 5, Position: 11.185m

Luff Curve

		Fanned Luff (@ 5.00% [0.182m])	Before BSeam
12.299m,	0.000m	100% (12.300m) :	-0.000m
9.224m,	-0.075m	90% (11.071m) :	0.024m
6.149m,	-0.100m	80% (9.839m) :	0.099m
3.075m,	-0.075m	70% (8.610m) :	0.136m
0.000m,	0.000m	60% (7.380m) :	0.157m
		50% (6.150m) :	0.163m
		40% (4.920m) :	0.155m
		30% (3.690m) :	0.131m
		20% (2.459m) :	0.096m
		10% (1.231m) :	0.050m
		0% (0.000m) :	0.000m

Mainsail: 7001104 Tim-1 Scanmar 10 Mainsail.des



Seam Allowances			
Zone: 1	Split	Radial	Cross
	0.030m	0.030m	0.030m

Edge Excesses			
Sail:	Luff	Leech	Foot
	0.000m	0.000m	0.000m

Total Seam Lengths (m)

Horizontal	20.68
Radial/Vertical	0.00
Bi-Radial Split	0.00

Materials

Material	Area (m ²)	Panels
Material 1	26.37	1,2,3,4,5 6,7,8,9,10