

Mainsail: 7001102 Sergio -1 Mainsail.des

Design Info
=====

Design File:
\\NAS\Engineering files\Queenie-Customer Order\Fareast Sails\2023 Order\Need to be Confirmed\7001102 Sergio\7001102 Sergio

Initial Design Date: 22/11/2023
Boat:

Comments:

Client:

Design Data
=====

Main

Measurements

Luff geodesic: 10.692m
Leech geodesic: 11.155m
Foot geodesic: 3.415m
Head geodesic: 0.115m
Upper width (MUW): 0.673m
Three-quarter width (MTW): 1.232m
Half width (MHW): 2.163m
Quarter width (MQW): 2.878m
Foot median: 10.897m
ORC Mainsail area: 21.483m?
Surface area: 22.019m?
Clew height: 0.100m
Mast rake: 0.000m

Battens

Position	Length	Roach	Angle	Luff	Leech	Full
80.000%	0.717m	0.215m	74.217?	8.549m	8.908m	
60.000%	1.024m	0.306m	74.217?	6.412m	6.681m	
40.000%	1.024m	0.274m	74.217?	4.276m	4.454m	
20.000%	0.854m	0.169m	74.217?	2.139m	2.227m	

Reefing Points

1, Luff: 1.500m ; Leech: 1.535m ; Offset: 0.000m ; Number Eyelets: 0
2, Luff: 2.500m ; Leech: 2.558m ; Offset: 0.000m ; Number Eyelets: 0

Draft Stripes

1, Luff: 3.527m ; Leech: 3.543m ;
2, Luff: 7.055m ; Leech: 7.221m ;

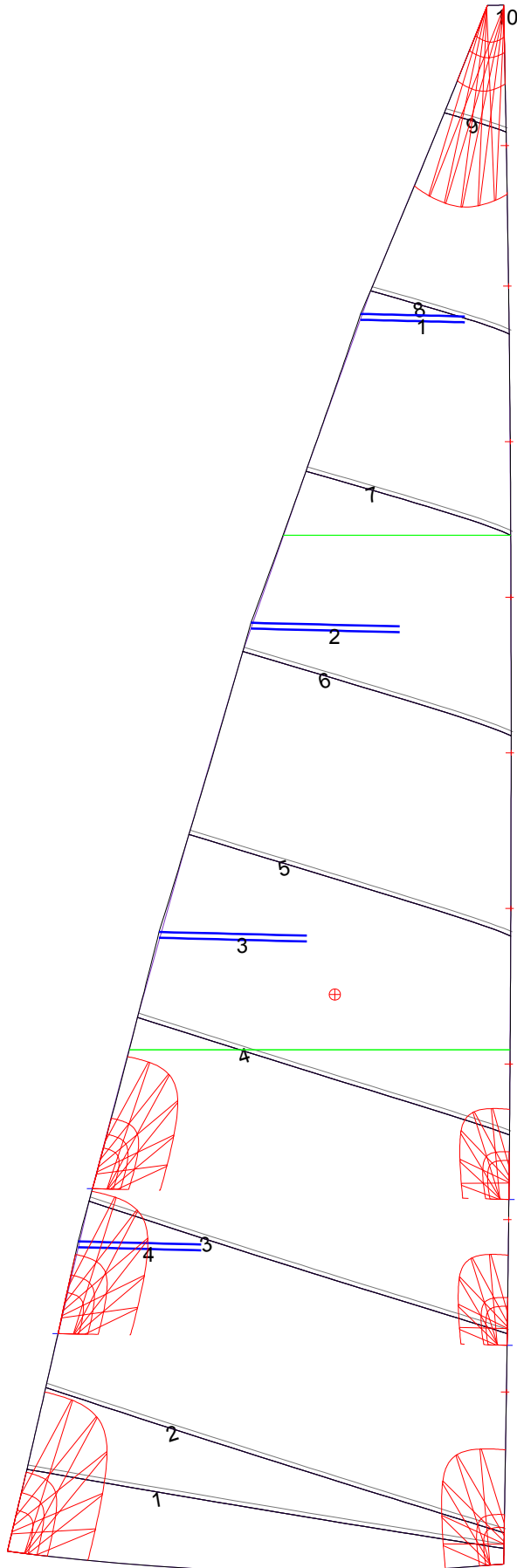
Luff Slides

1, Position: 1.181m
2, Position: 2.362m
3, Position: 3.429m
4, Position: 4.496m
5, Position: 5.563m
6, Position: 6.630m
7, Position: 7.698m
8, Position: 8.765m
9, Position: 9.729m

Luff Curve

		Fanned Luff (@ 5.00% [0.170m])	Before BSeam
10.692m,	0.000m	100% (10.692m) :	0.000m
9.359m,	-0.025m	90% (9.623m) :	0.014m
8.019m,	-0.042m	80% (8.554m) :	0.071m
6.675m,	-0.050m	70% (7.484m) :	0.097m
5.346m,	-0.051m	60% (6.415m) :	0.112m
3.984m,	-0.047m	50% (5.346m) :	0.116m
2.673m,	-0.038m	40% (4.277m) :	0.112m
1.332m,	-0.021m	30% (3.208m) :	0.096m
0.000m,	0.000m	20% (2.138m) :	0.067m
		10% (1.069m) :	0.032m
		0% (0.000m) :	0.000m

Mainsail: 7001102 Sergio -1 Mainsail.des



Seam Allowances			
Zone: 1	Split	Radial	Cross
	0.030m	0.030m	0.030m

Edge Excesses			
Sail:	Luff	Leech	Foot
	0.000m	0.000m	0.000m

Total Seam Lengths (m)

Horizontal	19.92
Radial/Vertical	0.00
Bi-Radial Split	0.00

Materials

Material	Area (m ²)	Panels
Material 1	22.01	1,2,3,4,5 6,7,8,9,10