

Mainsail: 7001020 Andrea Endeavour 33 fullbattmain.des

Design Info
=====

Design File:
\\NAS\Engineering files\Queenie-Customer Order\Fareast Sails\2024 Orders\Need to be Confirmed\7001020 Andrea Endeavour 33

Initial Design Date: 22/3/2024
Boat:
Endeavour 33
Client:

Comments:

Design Data
=====

Main

Measurements

Luff geodesic: 11.238m
Leech geodesic: 11.940m
Foot geodesic: 4.225m
Head geodesic: 0.115m
Upper width (MUW): 0.757m
Three-quarter width (MTW): 1.390m
Half width (MHW): 2.514m
Quarter width (MQW): 3.458m
Foot median: 11.534m
ORC Mainsail area: 26.782m?
Surface area: 27.448m?
Clew height: 0.100m
Mast rake: 0.000m

Battens

Position	Length	Roach	Angle	Luff	Leech	Full
82.000%	1.086m	0.153m	71.365?	9.209m	9.755m	Full
62.000%	2.049m	0.234m	71.365?	6.961m	7.375m	Full
42.000%	2.866m	0.212m	71.365?	4.713m	4.996m	Full
22.000%	3.573m	0.135m	71.365?	2.466m	2.617m	Full

Reefing Points

- 1, Luff: 1.371m ; Leech: 1.436m ; Offset: 0.000m ; Number Eyelets: 3
- 2, Luff: 3.090m ; Leech: 3.232m ; Offset: 0.000m ; Number Eyelets: 3
- 3, Luff: 5.000m ; Leech: 5.233m ; Offset: 0.000m ; Number Eyelets: 2

Draft Stripes

- 1, Luff: 3.707m ; Leech: 3.795m ;
- 2, Luff: 7.416m ; Leech: 7.731m ;

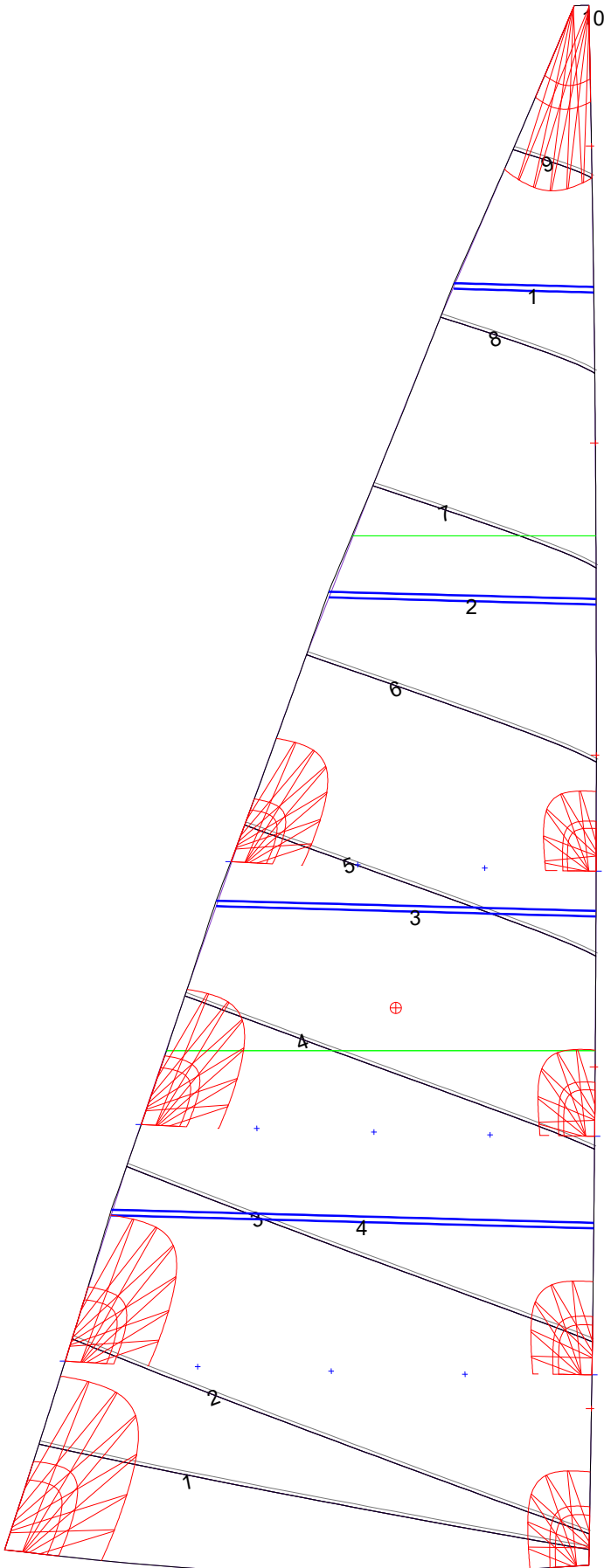
Luff Slides

- 1, Position: 1.128m
- 2, Position: 3.590m
- 3, Position: 5.837m
- 4, Position: 8.085m
- 5, Position: 10.223m

Luff Curve

		Fanned Luff (@ 5.00% [0.210m])	Before BSeam
11.238m,	0.000m	100% (11.238m) :	0.000m
9.837m,	-0.026m	90% (10.114m) :	0.016m
8.428m,	-0.045m	80% (8.990m) :	0.029m
7.016m,	-0.052m	70% (7.867m) :	0.037m
5.619m,	-0.053m	60% (6.743m) :	0.039m
4.187m,	-0.049m	50% (5.619m) :	0.039m
2.809m,	-0.040m	40% (4.495m) :	0.036m
1.400m,	-0.022m	30% (3.371m) :	0.030m
0.000m,	0.000m	20% (2.248m) :	0.022m
		10% (1.124m) :	0.010m
		0% (0.000m) :	0.000m

Mainsail: 7001020 Andrea Endeavour 33 fullbattmain.des



Seam Allowances			
Zone: 1	Split	Radial	Cross
	0.025m	0.025m	0.025m

Edge Excesses			
Sail:	Luff	Leech	Foot
	0.000m	0.000m	0.000m

Total Seam Lengths (m)

Horizontal	23.89
Radial/Vertical	0.00
Bi-Radial Split	0.00

Materials

Material	Area (m ²)	Panels
Material 1	27.44	1,2,3,4,5 6,7,8,9,10