

Mainsail: 7001015 Nicolas-1 Mainsail.des

Design Info
=====

Design File:
\\NAS\Engineering files\Queenie-Customer Order\Fareast Sails\2023 Order\Need to be Confirmed\7001015 Nicolas\70

Initial Design Date: 16/11/2023
Boat:

Comments:

Client:

Design Data
=====

Main

Measurements

Luff geodesic: 14.256m
Leech geodesic: 15.125m
Foot geodesic: 5.247m
Head geodesic: 0.135m
Upper width (MUW): 1.099m
Three-quarter width (MTW): 2.010m
Half width (MHW): 3.440m
Quarter width (MQW): 4.473m
Foot median: 14.627m
ORC Mainsail area: 45.006m?
Surface area: 46.446m?
Clew height: 0.100m
Mast rake: 0.000m

Battens

Position	Length	Roach	Angle	Luff	Leech	Full
82.000%	1.645m	0.432m	71.672?	11.680m	12.345m	Full
62.000%	2.919m	0.587m	71.672?	8.829m	9.334m	Full
42.000%	3.881m	0.523m	71.672?	5.979m	6.323m	Full
22.000%	4.602m	0.308m	71.672?	3.130m	3.312m	Full

Reefing Points

1, Luff: 1.738m ; Leech: 1.798m ; Offset: 0.000m ; Number Eyelets: 3
2, Luff: 3.776m ; Leech: 3.901m ; Offset: 0.000m ; Number Eyelets: 3

Draft Stripes

1, Luff: 3.562m ; Leech: 3.559m ;
2, Luff: 7.125m ; Leech: 7.289m ;
3, Luff: 10.688m ; Leech: 11.086m ;

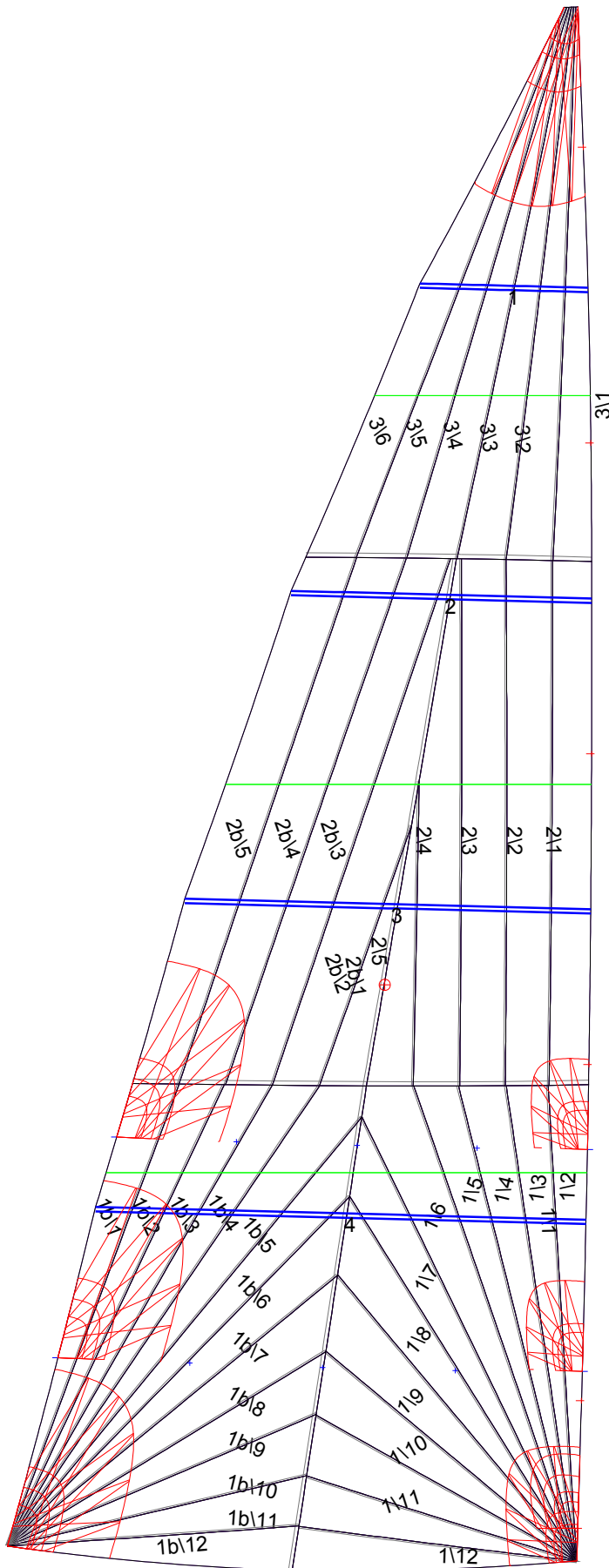
Luff Slides

1, Position: 1.470m
2, Position: 4.555m
3, Position: 7.404m
4, Position: 10.254m
5, Position: 12.968m

Luff Curve

		Fanned Luff (@ 5.00% [0.261m])	Before BSeam
14.254m,	0.000m	100% (14.256m) :	0.000m
12.478m,	-0.071m	90% (12.831m) :	0.083m
10.691m,	-0.115m	80% (11.405m) :	0.156m
8.899m,	-0.130m	70% (9.980m) :	0.201m
7.127m,	-0.129m	60% (8.554m) :	0.219m
5.311m,	-0.117m	50% (7.128m) :	0.220m
3.564m,	-0.091m	40% (5.702m) :	0.203m
1.776m,	-0.050m	30% (4.277m) :	0.169m
0.000m,	0.000m	20% (2.851m) :	0.121m
		10% (1.426m) :	0.063m
		0% (0.000m) :	0.000m

Mainsail: 7001015 Nicolas-1 Mainsail.des



Seam Allowances

	Split	Radial	Cross
Zone: 1/a	0.032m	0.016m	0.040m
Zone: 1/b	0.032m	0.016m	0.040m
Zone: 2/a	0.032m	0.016m	0.040m
Zone: 2/b	0.032m	0.016m	0.040m
Zone: 3	0.032m	0.016m	0.040m

Edge Excesses

Sail:	Luff	Leech	Foot
	0.000m	0.000m	0.000m

Total Seam Lengths (m)

Horizontal	7.09
Radial/Vertical	147.82
Bi-Radial Split	9.75

Materials

Material	Area (m ²)	Panels
Material 1	46.52	1\1,1\2,1\3,1\4,1\5 1\6,1\7,1\8,1\9,1\10 1\11,1\12,1b\1,1b\2,1b\3 1b\4,1b\5,1b\6,1b\7,1b\8 1b\9,1b\10,1b\11,1b\12,2\1 2\2,2\3,2\4,2\5,2b\1 2b\2,2b\3,2b\4,2b\5,3\1 3\2,3\3,3\4,3\5,3\6