

Mainsail: 7001010 Muriel Mainsail.des

Design Info
=====

Design File:
\\NAS\Engineering files\Queenie-Customer Order\Fareast Sails\2023 Order\Need to be Confirmed\7001010 Muriel\700

Initial Design Date: 18/10/2023
Boat:

Comments:

Client:

Design Data
=====

Main

Measurements

Luff geodesic: 9.028m
Leech geodesic: 9.501m
Foot geodesic: 3.247m
Head geodesic: 0.115m
Upper width (MUW): 0.657m
Three-quarter width (MTW): 1.181m
Half width (MHW): 2.039m
Quarter width (MQW): 2.702m
Foot median: 9.295m
ORC Mainsail area: 17.168m?
Surface area: 17.758m?
Clew height: 0.100m
Mast rake: 0.000m

Battens

Position	Length	Roach	Angle	Luff	Leech	Full
82.000%	0.965m	0.222m	70.763?	7.416m	7.765m	Full
62.000%	0.830m	0.290m	70.763?	5.628m	5.871m	
42.000%	0.830m	0.255m	70.763?	3.840m	3.977m	
22.000%	0.830m	0.147m	70.763?	2.052m	2.083m	

Reefing Points

1, Luff: 1.218m ; Leech: 1.262m ; Offset: 0.000m ; Number Eyelets: 0
2, Luff: 2.482m ; Leech: 2.568m ; Offset: 0.000m ; Number Eyelets: 0

Draft Stripes

1, Luff: 2.978m ; Leech: 3.016m ;
2, Luff: 5.957m ; Leech: 6.147m ;

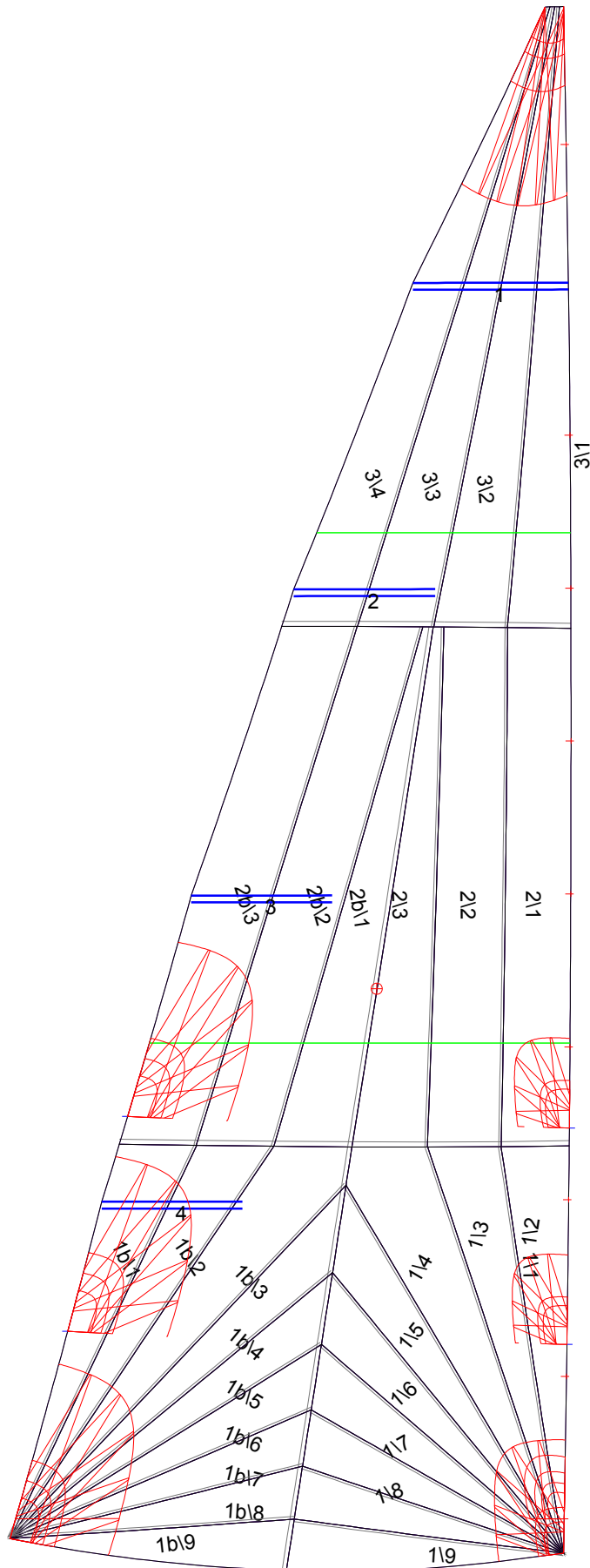
Luff Slides

1, Position: 1.031m
2, Position: 2.062m
3, Position: 2.955m
4, Position: 3.848m
5, Position: 4.741m
6, Position: 5.633m
7, Position: 6.526m
8, Position: 8.223m

Luff Curve

		Fanned Luff (@ 5.00% [0.162m])	Before BSeam
9.028m,	0.000m	100% (9.028m) :	0.000m
7.903m,	-0.021m	90% (8.125m) :	0.033m
6.771m,	-0.036m	80% (7.222m) :	0.063m
5.636m,	-0.042m	70% (6.320m) :	0.085m
4.514m,	-0.043m	60% (5.417m) :	0.096m
3.364m,	-0.040m	50% (4.514m) :	0.098m
2.257m,	-0.032m	40% (3.611m) :	0.091m
1.125m,	-0.018m	30% (2.708m) :	0.075m
0.000m,	0.000m	20% (1.806m) :	0.053m
		10% (0.903m) :	0.026m
		0% (0.000m) :	0.000m

Mainsail: 7001010 Muriel Mainsail.des



Seam Allowances

Zone:	Split	Radial	Cross
Zone: 1/a	0.025m	0.015m	0.030m
Zone: 1/b	0.025m	0.015m	0.030m
Zone: 2/a	0.025m	0.015m	0.030m
Zone: 2/b	0.025m	0.015m	0.030m
Zone: 3	0.025m	0.015m	0.030m

Edge Excesses

Sail:	Luff	Leech	Foot
	0.000m	0.000m	0.000m

Total Seam Lengths (m)

Horizontal	4.48
Radial/Vertical	58.38
Bi-Radial Split	5.75

Materials

Material	Area (m ²)	Panels
Material 1	17.79	1/1,1/2,1/3,1/4,1/5 1/6,1/7,1/8,1/9,1b1 1b2,1b3,1b4,1b5,1b6 1b7,1b8,1b9,2/1,2/2 2/3,2b1,2b2,2b3,3/1 3/2,3/3,3/4