

# Mainsail: 7001004 Paul-1 Custom Catamaran MainsailV4.des

Design Info  
=====

Design File:  
\\NAS\Engineering files\Queenie-Customer Order\Fareast Sails\2023 Order\Need to be Confirmed\7001004 Paul\7001

Initial Design Date: 10/10/2023  
Boat:

Comments:

Client:

Design Data  
=====

## Main

### Measurements

Luff geodesic: 18.750m  
 Leech geodesic: 19.450m  
 Foot geodesic: 6.550m  
 Head geodesic: 0.140m  
 Upper width (MUW): 2.052m  
 Three-quarter width (MTW): 3.571m  
 Half width (MHW): 5.045m  
 Quarter width (MQW): 5.889m  
 Foot median: 18.989m  
 ORC Mainsail area: 84.133m?  
 Surface area: 88.205m?  
 Clew height: 0.508m  
 Mast rake: 0.000m

### Battens

Position	Length	Roach	Angle	Luff	Leech	Full
91.117%	2.084m	1.234m	70.744?	17.127m	17.604m	Full
81.687%	3.420m	1.855m	70.744?	15.407m	15.782m	Full
71.236%	4.188m	1.891m	70.744?	13.501m	13.763m	Full
59.642%	4.803m	1.736m	70.744?	11.386m	11.523m	Full
47.621%	5.239m	1.421m	70.744?	9.193m	9.200m	Full
35.487%	5.622m	1.074m	70.744?	6.980m	6.856m	Full
23.300%	5.985m	0.729m	70.744?	4.757m	4.501m	Full
10.446%	6.312m	0.335m	70.743?	2.413m	2.018m	Full

### Reefing Points

1, Luff: 2.996m ; Leech: 3.023m ; Offset: 0.000m ; Number Eyelets: 0  
 2, Luff: 5.900m ; Leech: 5.950m ; Offset: 0.000m ; Number Eyelets: 0  
 3, Luff: 9.555m ; Leech: 9.628m ; Offset: 0.000m ; Number Eyelets: 0

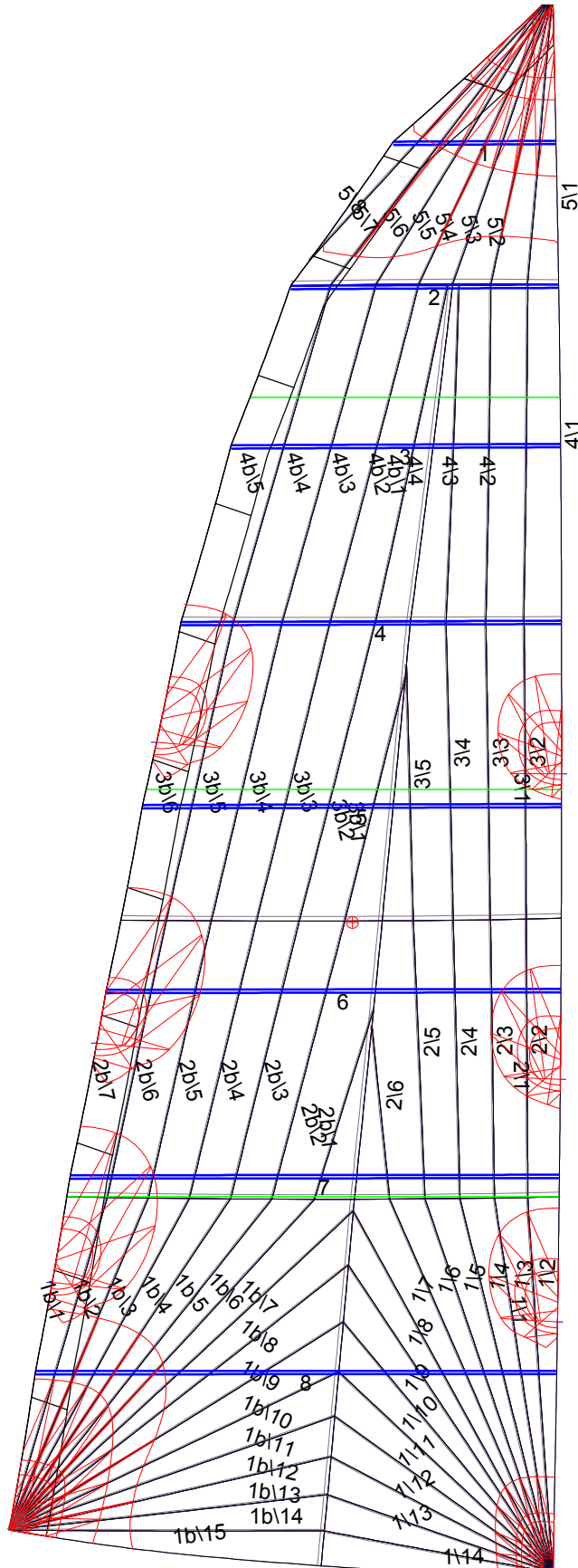
### Draft Stripes

1, Luff: 4.495m ; Leech: 4.070m ;  
 2, Luff: 9.367m ; Leech: 9.049m ;  
 3, Luff: 14.056m ; Leech: 13.885m ;

### Luff Curve

		Fanned Luff (@ 5.00% [0.326m])	Before BSeam
18.749m,	0.000m	100% (18.750m) :	0.000m
16.413m,	-0.050m	90% (16.876m) :	0.089m
14.062m,	-0.085m	80% (15.000m) :	0.159m
11.705m,	-0.100m	70% (13.125m) :	0.198m
9.374m,	-0.102m	60% (11.250m) :	0.211m
6.986m,	-0.094m	50% (9.375m) :	0.202m
4.687m,	-0.075m	40% (7.500m) :	0.178m
2.336m,	-0.043m	30% (5.625m) :	0.143m
0.000m,	0.000m	20% (3.750m) :	0.099m
		10% (1.876m) :	0.048m
		0% (0.000m) :	0.000m

# Mainsail: 7001004 Paul-1 Custom Catamaran MainsailV4.des



## Seam Allowances

Zone:	Split	Radial	Cross
Zone: 1/a	0.045m	0.016m	0.055m
Zone: 1/b	0.045m	0.016m	0.055m
Zone: 2/a	0.045m	0.016m	0.055m
Zone: 2/b	0.045m	0.016m	0.055m
Zone: 3/a	0.045m	0.016m	0.055m
Zone: 3/b	0.045m	0.016m	0.055m
Zone: 4/a	0.045m	0.016m	0.055m
Zone: 4/b	0.045m	0.016m	0.055m
Zone: 5	0.045m	0.016m	0.055m
Cover 1	0.030m	0.030m	0.030m

## Edge Excesses

Sail:	Luff	Leech	Foot
Sail:	0.000m	0.000m	0.000m
Cover 0	0.000m	0.000m	0.000m

## Total Seam Lengths (m)

Horizontal	19.71
Radial/Vertical	240.36
Bi-Radial Split	16.05

## Materials

Material	Area (m <sup>2</sup> )	Panels
Material 1	88.19	1\1,1\2,1\3,1\4,1\5 1\6,1\7,1\8,1\9,1\10 1\11,1\12,1\13,1\14,1b\1 1b\2,1b\3,1b\4,1b\5,1b\6 1b\7,1b\8,1b\9,1b\10,1b\11 1b\12,1b\13,1b\14,1b\15,2\1 2\2,2\3,2\4,2\5,2\6 2b\1,2b\2,2b\3,2b\4,2b\5 2b\6,2b\7,3\1,3\2,3\3 3\4,3\5,3b\1,3b\2,3b\3 3b\4,3b\5,3b\6,4\1,4\2 4\3,4\4,4b\1,4b\2,4b\3 4b\4,4b\5,5\1,5\2,5\3 5\4,5\5,5\6,5\7,5\8