

# Mainsail: 7001004 Paul-1 Custom Catamaran MainsailV1.des

Design Info  
=====

Design File:  
\\NAS\Engineering files\Queenie-Customer Order\Fareast Sails\2023 Order\Need to be Confirmed\7001004 Paul\7001

Initial Design Date: 10/10/2023  
Boat:

Comments:

Client:

Design Data  
=====

## Main

### Measurements

Luff geodesic:	18.560m
Leech geodesic:	19.260m
Foot geodesic:	6.550m
Head geodesic:	0.100m
Upper width (MUW):	2.146m
Three-quarter width (MTW):	3.570m
Half width (MHW):	4.964m
Quarter width (MQW):	5.858m
Foot median:	18.772m
ORC Mainsail area:	82.929m?
Surface area:	86.966m?
Clew height:	0.531m
Mast rake:	0.000m

### Battens

Position	Length	Roach	Angle	Luff	Leech	Full
91.030%	2.075m	1.292m	88.508?	16.710m	17.416m	Full
80.995%	3.424m	1.904m	78.838?	14.928m	15.496m	Full
70.209%	4.202m	1.880m	72.149?	13.125m	13.433m	Full
57.847%	4.781m	1.641m	72.149?	10.872m	11.068m	Full
46.455%	5.189m	1.324m	72.149?	8.797m	8.888m	Full
34.330%	5.598m	0.981m	72.149?	6.588m	6.568m	Full
22.117%	5.987m	0.648m	72.149?	4.363m	4.232m	Full
11.189%	6.277m	0.332m	72.149?	2.373m	2.141m	Full

### Reefing Points

- 1, Luff: 2.688m ; Leech: 2.713m ; Offset: 0.000m ; Number Eyelets: 0
- 2, Luff: 5.284m ; Leech: 5.330m ; Offset: 0.000m ; Number Eyelets: 0
- 3, Luff: 9.273m ; Leech: 9.344m ; Offset: 0.000m ; Number Eyelets: 0

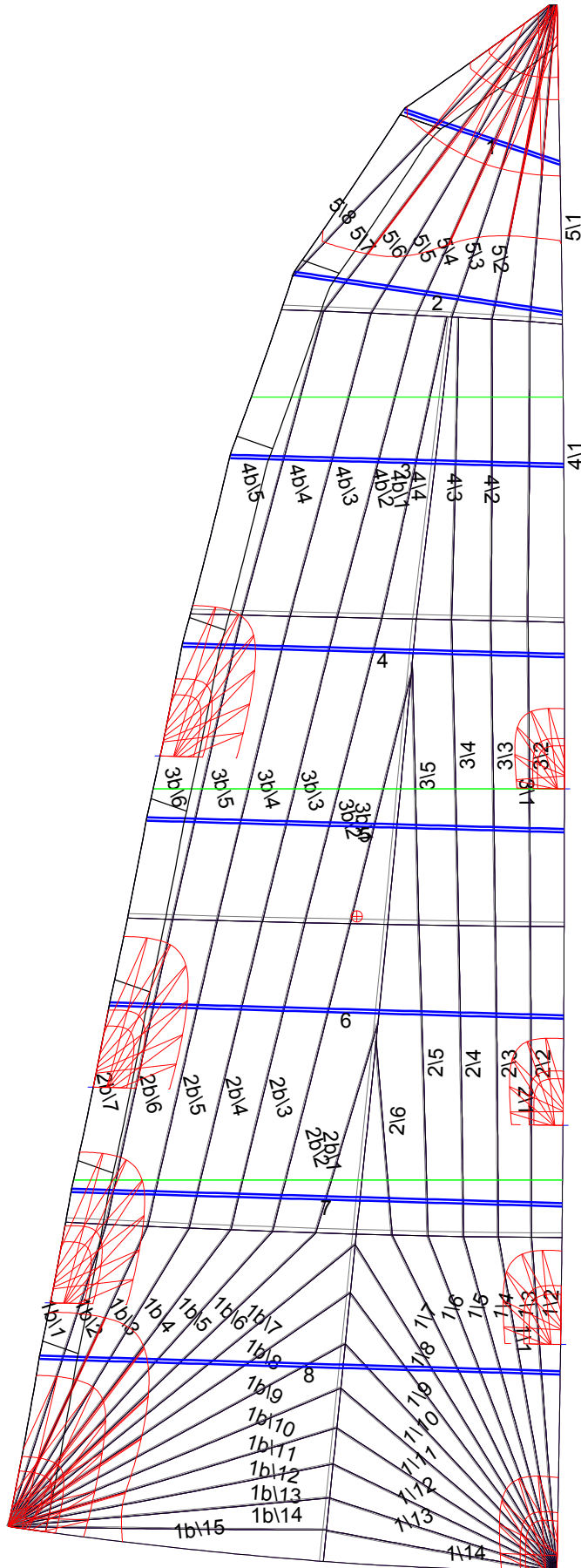
### Draft Stripes

- 1, Luff: 4.635m ; Leech: 4.199m ;
- 2, Luff: 9.273m ; Leech: 8.944m ;
- 3, Luff: 13.914m ; Leech: 13.721m ;

### Luff Curve

		Fanned Luff (@ 5.00% [0.325m])	Before BSeam
18.559m,	0.000m	100% (18.560m) :	0.000m
16.247m,	-0.043m	90% (16.705m) :	0.024m
13.920m,	-0.074m	80% (14.848m) :	0.044m
11.587m,	-0.087m	70% (12.992m) :	0.056m
9.280m,	-0.088m	60% (11.136m) :	0.061m
6.915m,	-0.082m	50% (9.280m) :	0.061m
4.640m,	-0.065m	40% (7.424m) :	0.057m
2.313m,	-0.037m	30% (5.568m) :	0.049m
0.000m,	0.000m	20% (3.712m) :	0.036m
		10% (1.857m) :	0.017m
		0% (0.000m) :	0.000m

# Mainsail: 7001004 Paul-1 Custom Catamaran MainsailV1.des



## Seam Allowances

	Split	Radial	Cross
Zone: 1/a	0.045m	0.016m	0.055m
Zone: 1/b	0.045m	0.016m	0.055m
Zone: 2/a	0.045m	0.016m	0.055m
Zone: 2/b	0.045m	0.016m	0.055m
Zone: 3/a	0.045m	0.016m	0.055m
Zone: 3/b	0.045m	0.016m	0.055m
Zone: 4/a	0.045m	0.016m	0.055m
Zone: 4/b	0.045m	0.016m	0.055m
Zone: 5	0.045m	0.016m	0.055m
Cover 1	0.250m	0.250m	0.250m

## Edge Excesses

	Luff	Leech	Foot
Sail:	0.000m	0.000m	0.000m
Cover 0	0.000m	0.000m	0.000m

## Total Seam Lengths (m)

Horizontal	19.68
Radial/Vertical	236.51
Bi-Radial Split	15.47

## Materials

Material	Area (m <sup>2</sup> )	Panels
Material 1	87.03	1\1,1\2,1\3,1\4,1\5 1\6,1\7,1\8,1\9,1\10 1\11,1\12,1\13,1\14,1b\1 1b\2,1b\3,1b\4,1b\5,1b\6 1b\7,1b\8,1b\9,1b\10,1b\11 1b\12,1b\13,1b\14,1b\15,2\1 2\2,2\3,2\4,2\5,2\6 2b\1,2b\2,2b\3,2b\4,2b\5 2b\6,2b\7,3\1,3\2,3\3 3\4,3\5,3b\1,3b\2,3b\3 3b\4,3b\5,3b\6,4\1,4\2 4\3,4\4,4b\1,4b\2,4b\3 4b\4,4b\5,5\1,5\2,5\3 5\4,5\5,5\6,5\7,5\8