

Spinnaker: 7000926 Mike Frers 33 sym spinnakerV2.des

Design Info

=====

Design File:

\\NAS\Engineering files\Queenie-Customer Order\Fareast Sails\2023 Order\Need to be Confirmed\7000926 Mike\7000

Initial Design Date: 6/10/2023

Boat:

Client:

Comments:

Design Data

=====

Spinnaker

Measurements

Leech length (SLE): 518.52In
Foot length (SFL): 279.00In
Headboard Width: 0.19In
Maximum width (38.9%): 290.07In
Three-quarter width: 195.55In
Half width (SHW): 287.30In
Quarter width: 287.30In
Foot median: 564.74In
ORC Spinnaker Area: 857.111Ft?
IRC Spinnaker Area: 853.682Ft?
Surface Area: 912.158Ft?
Hoist height: 540.00In
Pole Length: 159.96In

Luff Curve

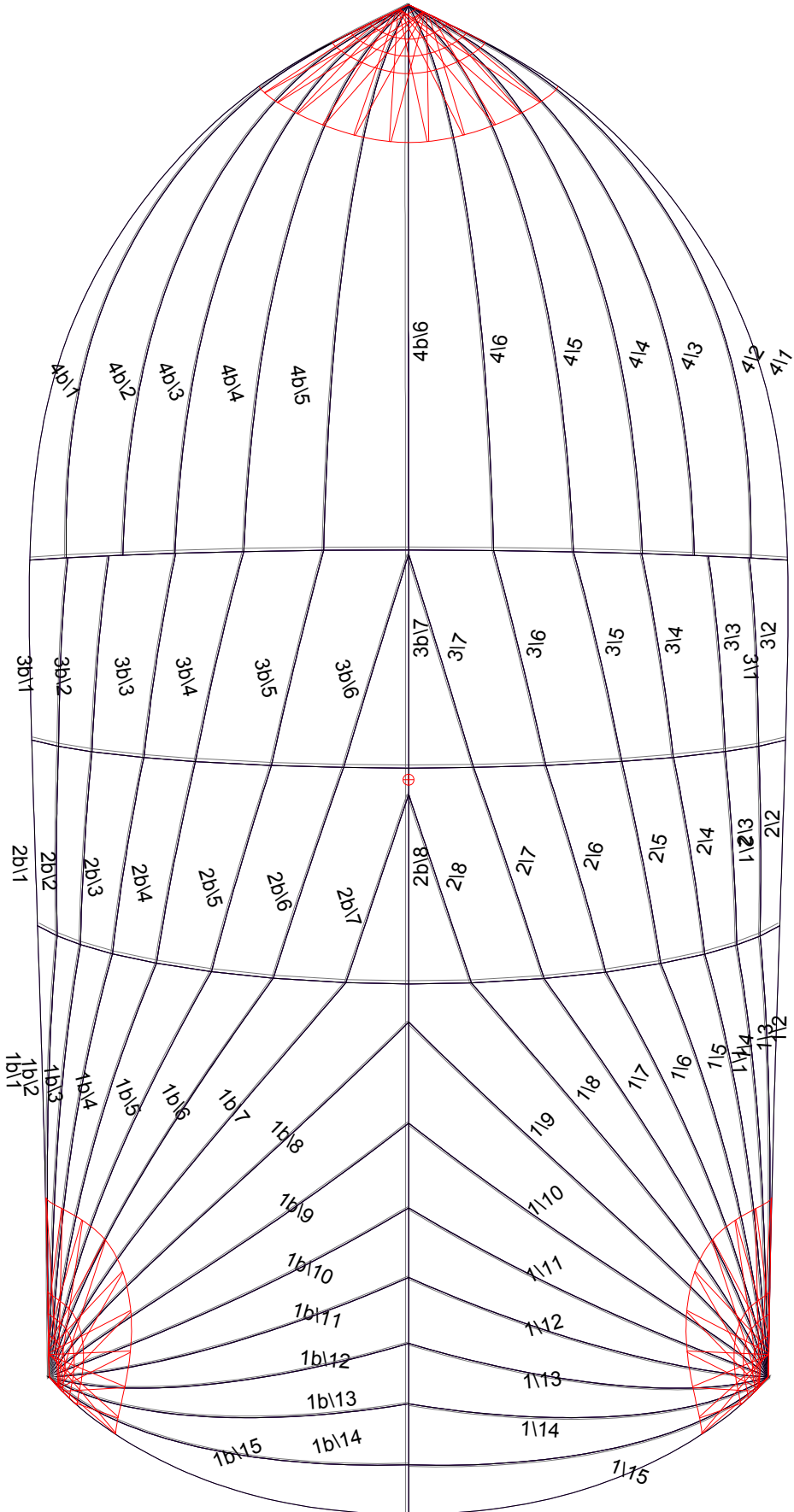
610.24In, 0.00In
457.68In, 0.00In
305.12In, 0.00In
152.56In, 0.00In
0.00In, 0.00In

Fanned Luff (@ 5.00% [11.41In])

100% (152.60In) :	-0.00In	-0.00In
113% (173.17In) :	43.09In	92.53In
136% (207.12In) :	110.88In	109.92In
164% (250.23In) :	155.92In	113.56In
123% (187.69In) :	124.76In	105.58In
102% (155.73In) :	59.43In	91.47In
84% (128.06In) :	88.17In	75.06In
54% (82.52In) :	103.62In	57.24In
32% (49.07In) :	74.19In	38.51In
17% (26.40In) :	38.27In	19.49In
0% (0.00In) :	0.00In	0.00In

Before BSeam

Spinnaker: 7000926 Mike Frers 33 sym spinnakerV2.des



Seam Allowances

Zone:	Split	Radial	Cross
Zone: 1/a	0.984In	0.512In	0.984In
Zone: 1/b	0.984In	0.512In	0.984In
Zone: 2/a	0.984In	0.512In	0.984In
Zone: 2/b	0.984In	0.512In	0.984In
Zone: 3/a	0.984In	0.512In	0.984In
Zone: 3/b	0.984In	0.516In	0.984In
Zone: 4/a	0.984In	0.512In	0.984In
Zone: 4/b	0.984In	0.512In	0.984In

Edge Excesses

Sail:	Luff	Leech	Foot
	0.000In	0.000In	0.000In

Total Seam Lengths (In)

Horizontal	864.24
Radial/Vertical	8966.12
Bi-Radial Split	575.22

Materials

Material	Area (Ft ²)	Panels
white	502.54	1\3,1\4,1\5,1\7,1\8 1\9,1\10,1b\3,1b\4,1b\5 1b\7,1b\8,1b\9,1b\10,2\3 2\4,2\5,2\7,2\8,2b\8 2b\7,2b\5,2b\4,2b\3,3\3 3\4,3\5,3\7,3b\7,3b\5 3b\4,3b\3,4\3,4\4,4\5 4b\5,4b\4,4b\3
black	283.40	1\1,1\2,1\11,1\12,1\13 1\14,1\15,1b\1,1b\2,1b\11 1b\12,1b\13,1b\14,1b\15,2\1 2\2,2b\2,2b\1,3\1,3\2 3b\2,3b\1,4\1,4\2,4b\2 4b\1
red	125.13	1\6,1b\6,2\6,2b\6,3\6 3b\6,4\6,4b\6