

# Spinnaker: 7000926 Mike Frers 33 sym spinnakerV1.des

Design Info  
=====

Design File:  
\\NAS\Engineering files\Queenie-Customer Order\Fareast Sails\2023 Order\Need to be Confirmed\7000926 Mike\7000

Initial Design Date: 6/10/2023  
Boat:

Comments:

Client:

Design Data  
=====

## Spinnaker

### Measurements

Leech length (SLE): 552.01In  
Foot length (SFL): 287.88In  
Headboard Width: 0.19In  
Maximum width (41.1%): 333.66In  
Three-quarter width: 216.77In  
Half width (SHW): 330.25In  
Quarter width: 325.02In  
Foot median: 603.25In  
ORC Spinnaker Area: 1027.912Ft?  
IRC Spinnaker Area: 1023.800Ft?  
Surface Area: 1090.719Ft?  
Hoist height: 540.00In  
Pole Length: 159.96In

### Luff Curve

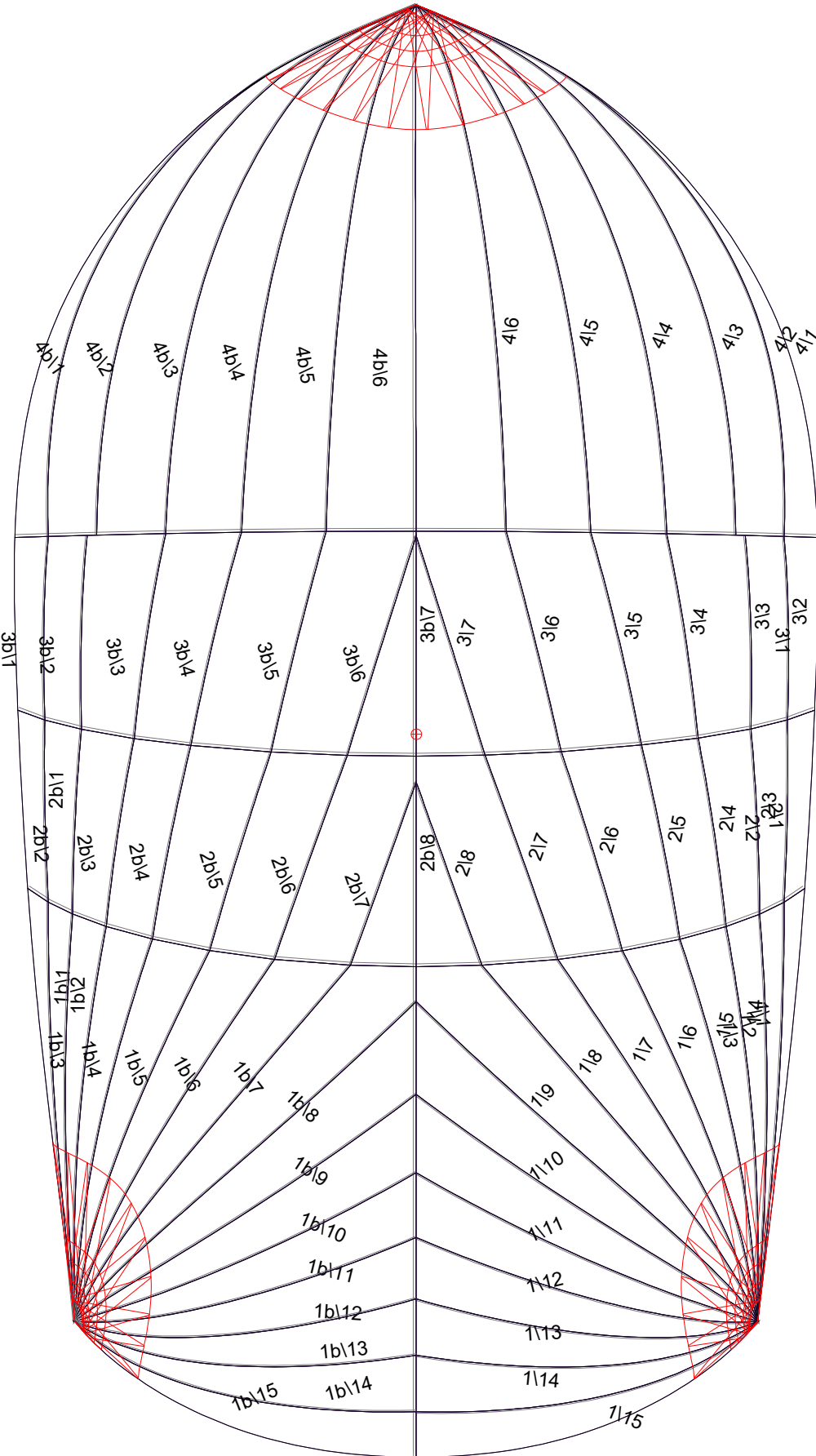
610.24In, 0.00In  
457.68In, 0.00In  
305.12In, 0.00In  
152.56In, 0.00In  
0.00In, 0.00In

### Fanned Luff (@ 5.00% [11.79In])

100% (173.31In) :	0.00In	0.00In
93% (161.18In) :	135.63In	106.65In
96% (167.24In) :	217.58In	127.79In
81% (139.99In) :	125.32In	133.68In
64% (110.96In) :	158.28In	126.31In
60% (104.05In) :	207.89In	111.50In
47% (81.07In) :	153.41In	93.34In
21% (36.12In) :	133.27In	72.67In
12% (20.42In) :	90.87In	49.79In
7% (11.60In) :	46.82In	25.31In
0% (0.00In) :	0.00In	0.00In

### Before BSeam

# Spinnaker: 7000926 Mike Frers 33 sym spinnakerV1.des



## Seam Allowances

Zone:	Split	Radial	Cross
Zone: 1/a	0.984In	0.512In	0.984In
Zone: 1/b	0.984In	0.512In	0.984In
Zone: 2/a	0.984In	0.512In	0.984In
Zone: 2/b	0.984In	0.512In	0.984In
Zone: 3/a	0.984In	0.512In	0.984In
Zone: 3/b	0.984In	0.512In	0.984In
Zone: 4/a	0.984In	0.512In	0.984In
Zone: 4/b	0.984In	0.512In	0.984In

## Edge Excesses

Sail:	Luff	Leech	Foot
	0.000In	0.000In	0.000In

## Total Seam Lengths (In)

Horizontal	990.99
Radial/Vertical	9421.45
Bi-Radial Split	613.60

## Materials

Material	Area (Ft <sup>2</sup> )	Panels
white	626.83	1\3,1\4,1\5,1\7,1\8 1\9,1\10,1b\3,1b\4,1b\5 1b\7,1b\8,1b\9,1b\10,2\3 2\4,2\5,2\7,2\8,2b\8 2b\7,2b\5,2b\4,2b\3,3\3 3\4,3\5,3\7,3b\7,3b\5 3b\4,3b\3,4\3,4\4,4\5 4b\5,4b\4,4b\3
black	307.62	1\1,1\2,1\11,1\12,1\13 1\14,1\15,1b\1,1b\2,1b\11 1b\12,1b\13,1b\14,1b\15,2\1 2\2,2b\2,2b\1,3\1,3\2 3b\2,3b\1,4\1,4\2,4b\2 4b\1
red	155.37	1\6,1b\6,2\6,2b\6,3\6 3b\6,4\6,4b\6