

Spinnaker: 6000921 Ozzy-4 Farr30 S2 V1(1).des

Fareast Sails/ Michael, Job Number:

Design Info
=====

Design File:
\\NAS\Engineering files\Queenie-Customer Order\Fareast Sails\2023 Order\Need to be Confirmed\6000921 Ozzy\6000

Job No:
Initial Design Date: 5/8/2023
Boat:
Farr 30/Mumm 30
Client:
Fareast Sails/ Michael,

Comments:

Design Data
=====

Spinnaker

Measurements

Leech length (SLE): 12.800m
Foot length (SFL): 5.976m
Headboard Width: 0.020m
Maximum width (36.7%): 6.406m
Three-quarter width: 4.293m
Half width (SHW): 6.259m
Quarter width: 6.384m
Foot median: 14.037m
ORC Spinnaker Area: 66.155m?
IRC Spinnaker Area: 65.891m?
Surface Area: 71.333m?
Hoist height: 13.360m
Pole Length: 3.320m

Luff Curve

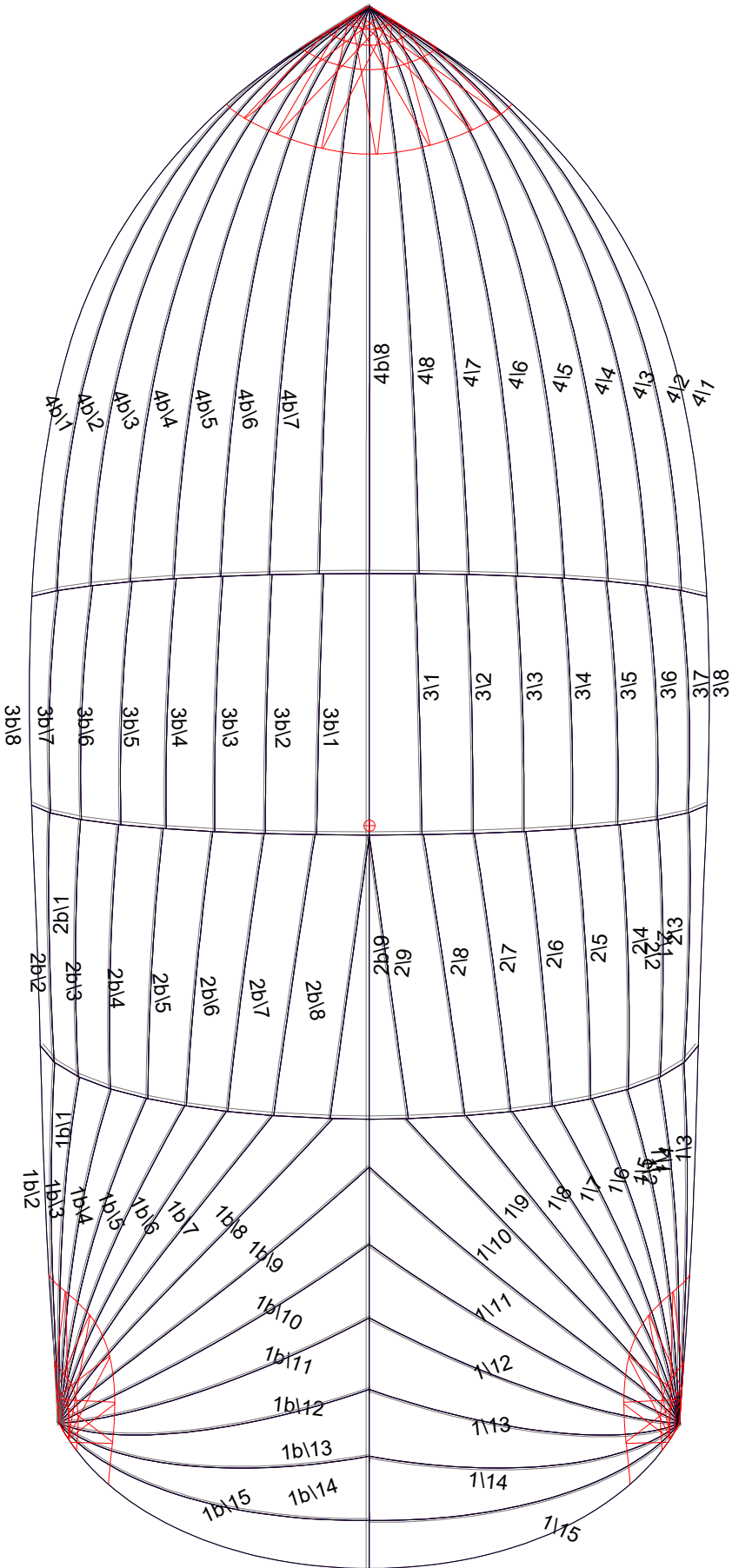
12.699m, 0.000m
9.524m, 0.000m
6.349m, 0.000m
3.175m, 0.000m
0.000m, 0.000m

Fanned Luff (@ 5.00% [0.238m])

Fanned Luff (@ 5.00% [0.238m])	Before BSeam
100% (7.265m) :	0.000m
47% (3.444m) :	-0.115m
46% (3.351m) :	1.491m
36% (2.617m) :	2.617m
41% (2.994m) :	4.113m
31% (2.249m) :	2.024m
21% (1.537m) :	2.661m
7% (0.527m) :	3.150m
0% (-0.023m) :	2.193m
0% (0.006m) :	1.162m
0% (0.000m) :	0.000m

Spinnaker: 6000921 Ozzy-4 Farr30 S2 V1(1).des

Fareast Sails/ Michael, Job Number:



Seam Allowances

Zone:	Split	Radial	Cross
Zone: 1/a	0.025m	0.014m	0.025m
Zone: 1/b	0.025m	0.014m	0.025m
Zone: 2/a	0.025m	0.014m	0.025m
Zone: 2/b	0.025m	0.014m	0.025m
Zone: 3/a	0.025m	0.014m	0.025m
Zone: 3/b	0.025m	0.014m	0.025m
Zone: 4/a	0.025m	0.014m	0.025m
Zone: 4/b	0.025m	0.014m	0.025m

Edge Excesses

Sail:	Luff	Leech	Foot
	0.000m	0.000m	0.000m

Total Seam Lengths (m)

Horizontal	18.97
Radial/Vertical	247.00
Bi-Radial Split	14.18

Materials

Material	Area (m ²)	Panels
Material 1	71.29	1\1,1\2,1\3,1\4,1\5 1\6,1\7,1\8,1\9,1\10 1\11,1\12,1\13,1\14,1\15 1b\1,1b\2,1b\3,1b\4,1b\5 1b\6,1b\7,1b\8,1b\9,1b\10 1b\11,1b\12,1b\13,1b\14,1b\15 2\1,2\2,2\3,2\4,2\5 2\6,2\7,2\8,2\9,2b\9 2b\8,2b\7,2b\6,2b\5,2b\4 2b\3,2b\2,2b\1,3\8,3\7 3\6,3\5,3\4,3\3,3\2 3\1,3b\1,3b\2,3b\3,3b\4 3b\5,3b\6,3b\7,3b\8,4\1 4\2,4\3,4\4,4\5,4\6 4\7,4\8,4b\8,4b\7,4b\6 4b\5,4b\4,4b\3,4b\2,4b\1