

Mainsail: 7000914 Jeroen-1 Koopmans 31 Nova MainsailV1.des

Design Info
=====

Design File:
\\NAS\Engineering files\Queenie-Customer Order\Fareast Sails\2023 Order\Need to be Confirmed\7000914 Jeroen\7000914 Jeroen-1 Koopmans 31 Nova MainsailV1.des

Initial Design Date: 21/9/2023
Boat:

Comments:

Client:

Design Data
=====

Main

Measurements

Luff geodesic: 9.157m
 Leech geodesic: 9.529m
 Foot geodesic: 2.920m
 Head geodesic: 0.115m
 Upper width (MUW): 0.605m
 Three-quarter width (MTW): 1.080m
 Half width (MHW): 1.853m
 Quarter width (MQW): 2.462m
 Foot median: 9.343m
 ORC Mainsail area: 15.833m?
 Surface area: 16.250m?
 Clew height: 0.100m
 Mast rake: 0.000m

Battens

Position	Length	Roach	Angle	Luff	Leech	Full
80.000%	0.946m	0.204m	74.351?	7.321m	7.600m	Full
60.000%	1.606m	0.265m	74.351?	5.491m	5.700m	Full
40.000%	2.144m	0.234m	74.351?	3.660m	3.800m	Full
20.000%	2.576m	0.135m	74.351?	1.831m	1.900m	Full

Reefing Points

1, Luff: 1.144m ; Leech: 1.175m ; Offset: 0.000m ; Number Eyelets: 2
 2, Luff: 2.426m ; Leech: 2.490m ; Offset: 0.000m ; Number Eyelets: 2

Draft Stripes

1, Luff: 3.021m ; Leech: 3.041m ;
 2, Luff: 6.042m ; Leech: 6.188m ;

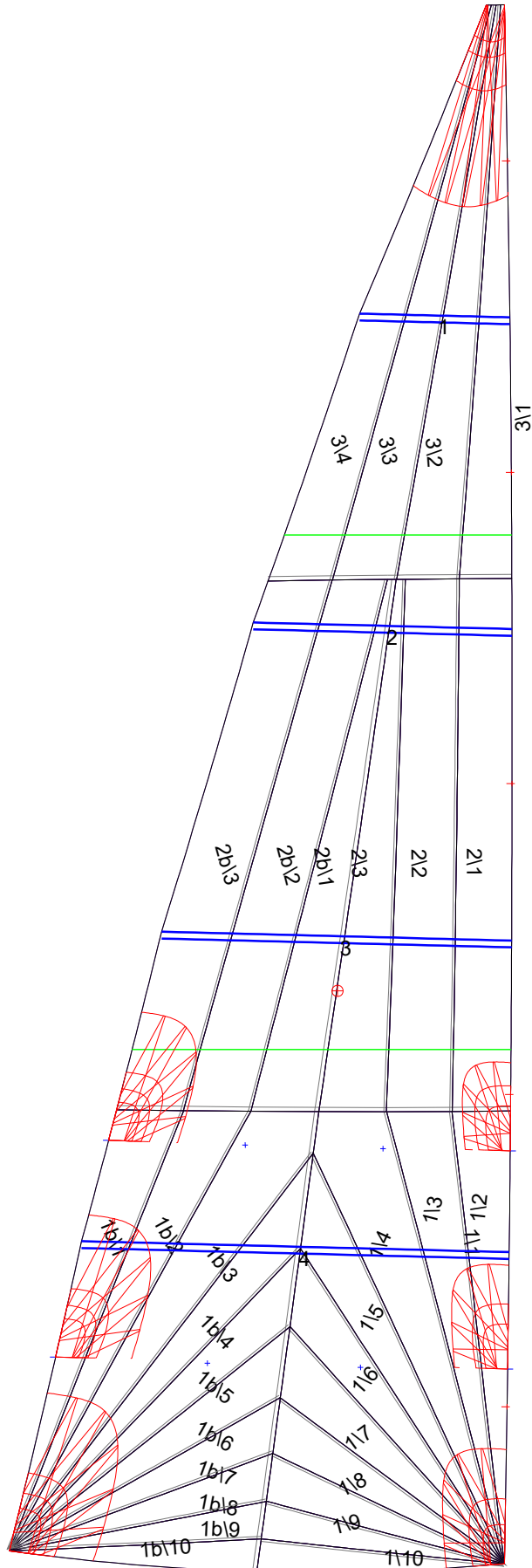
Luff Slides

1, Position: 0.921m
 2, Position: 2.756m
 3, Position: 4.583m
 4, Position: 6.410m
 5, Position: 8.240m

Luff Curve

		Fanned Luff (@ 5.00% [0.145m])	Before BSeam
9.157m,	0.000m	100% (9.157m) :	0.000m
8.016m,	-0.021m	90% (8.241m) :	0.013m
6.867m,	-0.037m	80% (7.326m) :	0.064m
5.717m,	-0.043m	70% (6.410m) :	0.082m
4.578m,	-0.044m	60% (5.494m) :	0.093m
3.412m,	-0.041m	50% (4.579m) :	0.096m
2.289m,	-0.033m	40% (3.663m) :	0.093m
1.141m,	-0.019m	30% (2.747m) :	0.082m
0.000m,	0.000m	20% (1.831m) :	0.062m
		10% (0.916m) :	0.032m
		0% (0.000m) :	0.000m

Mainsail: 7000914 Jeroen-1 Koopmans 31 Nova MainsailV1.des



Seam Allowances

	Split	Radial	Cross
Zone: 1/a	0.025m	0.015m	0.025m
Zone: 1/b	0.025m	0.015m	0.025m
Zone: 2/a	0.025m	0.015m	0.025m
Zone: 2/b	0.025m	0.015m	0.025m
Zone: 3	0.025m	0.015m	0.025m

Edge Excesses

Sail:	Luff	Leech	Foot
	0.000m	0.000m	0.000m

Total Seam Lengths (m)

Horizontal	3.91
Radial/Vertical	61.45
Bi-Radial Split	6.08

Materials

Material	Area (m ²)	Panels
Material 1	16.26	1i1,1i2,1i3,1i4,1i5 1i6,1i7,1i8,1i9,1i10 1b1,1b2,1b3,1b4,1b5 1b6,1b7,1b8,1b9,1b10 2i1,2i2,2i3,2b1,2b2 2b3,3i1,3i2,3i3,3i4