

Mainsail: 7000913 Patrick First 41S5 Mainsail.des

Design Info
=====

Design File:
\\NAS\Engineering files\Queenie-Customer Order\Fareast Sails\2023 Order\Need to be Confirmed\7000913 Patrick\70

Initial Design Date: 15/9/2023
Boat:

Comments:

Client:

Design Data
=====

Main

Measurements

Luff geodesic:	15.080m
Leech geodesic:	15.755m
Foot geodesic:	5.049m
Head geodesic:	0.190m
Upper width (MUW):	1.044m
Three-quarter width (MTW):	1.882m
Half width (MHW):	3.231m
Quarter width (MQW):	4.267m
Foot median:	15.371m
ORC Mainsail area:	45.248m?
Surface area:	46.442m?
Clew height:	0.100m
Mast rake:	0.000m

Battens

Position	Length	Roach	Angle	Luff	Leech	Full
80.000%	1.650m	0.345m	74.452?	12.050m	12.549m	Full
60.000%	2.805m	0.449m	74.452?	9.035m	9.412m	Full
40.000%	3.727m	0.396m	74.452?	6.022m	6.274m	Full
20.000%	4.456m	0.228m	74.452?	3.010m	3.137m	Full

Reefing Points

1, Luff: 1.883m ; Leech: 1.941m ; Offset: 0.000m ; Number Eyelets: 0
 2, Luff: 3.842m ; Leech: 3.951m ; Offset: 0.000m ; Number Eyelets: 0
 3, Luff: 6.404m ; Leech: 6.581m ; Offset: 0.000m ; Number Eyelets: 0

Draft Stripes

1, Luff: 3.767m ; Leech: 3.685m ;
 2, Luff: 7.535m ; Leech: 7.608m ;
 3, Luff: 11.305m ; Leech: 11.573m ;

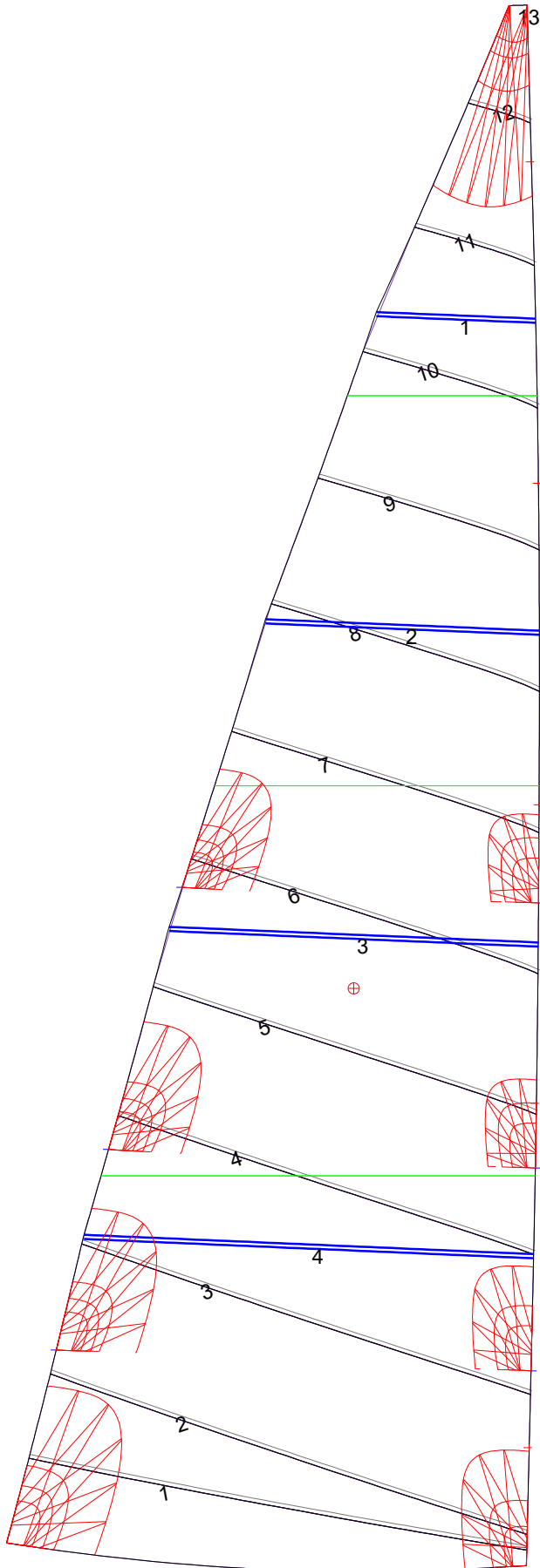
Luff Slides

1, Position: 1.140m
 2, Position: 4.468m
 3, Position: 7.353m
 4, Position: 10.459m
 5, Position: 13.565m

Luff Curve

		Fanned Luff (@ 5.00% [0.251m])	Before BSeam
15.079m,	0.000m	100% (15.080m) :	0.000m
11.309m,	-0.100m	90% (13.573m) :	0.071m
7.539m,	-0.120m	80% (12.064m) :	0.137m
3.770m,	-0.084m	70% (10.556m) :	0.184m
0.000m,	0.000m	60% (9.048m) :	0.208m
		50% (7.540m) :	0.211m
		40% (6.032m) :	0.200m
		30% (4.524m) :	0.171m
		20% (3.016m) :	0.124m
		10% (1.508m) :	0.061m
		0% (0.000m) :	0.000m

Mainsail: 7000913 Patrick First 41S5 Mainsail.des



Seam Allowances			
Zone: 1	Split	Radial	Cross
	0.040m	0.040m	0.040m

Edge Excesses			
Sail:	Luff	Leech	Foot
	0.000m	0.000m	0.000m

Total Seam Lengths (m)

Horizontal	38.92
Radial/Vertical	0.00
Bi-Radial Split	0.00

Materials

Material	Area (m ²)	Panels
Material 1	46.41	1,2,3,4,5 6,7,8,9,10 11,12,13