

Mainsail: 7000911 Jordan S2 Mainsail.des

Design Info
=====

Design File:
\\NAS\Engineering files\Queenie-Customer Order\Fareast Sails\2023 Order\Need to be Confirmed\7000911 Jordan\7000911 Jordan S2 Mainsail.des

Initial Design Date: 12/10/2023
Boat:

Comments:

Client:

Design Data
=====

Main

Measurements

Luff geodesic: 475.20In
 Leech geodesic: 498.08In
 Foot geodesic: 162.24In
 Head geodesic: 4.53In
 Upper width (MUW): 32.40In
 Three-quarter width (MTW): 58.86In
 Half width (MHW): 102.12In
 Quarter width (MQW): 135.04In
 Foot median: 486.05In
 ORC Mainsail area: 313.294Ft?
 Surface area: 321.506Ft?
 Clew height: 3.94In
 Mast rake: 0.00In

Battens

Position	Length	Roach	Angle	Luff	Leech	Full
82.000%	47.44In	11.14In	72.991?	389.49In	407.04In	Full
62.000%	85.16In	14.47In	72.991?	294.51In	307.76In	Full
42.000%	115.23In	12.76In	72.991?	199.54In	208.48In	Full
22.000%	139.08In	7.37In	72.991?	104.59In	109.21In	Full

Reefing Points

1, Luff: 64.13In ; Leech: 66.27In ; Offset: 0.00In ; Number Eyelets: 3
 2, Luff: 130.64In ; Leech: 134.87In ; Offset: 0.00In ; Number Eyelets: 3

Draft Stripes

1, Luff: 156.77In ; Leech: 158.56In ;
 2, Luff: 313.57In ; Leech: 322.73In ;

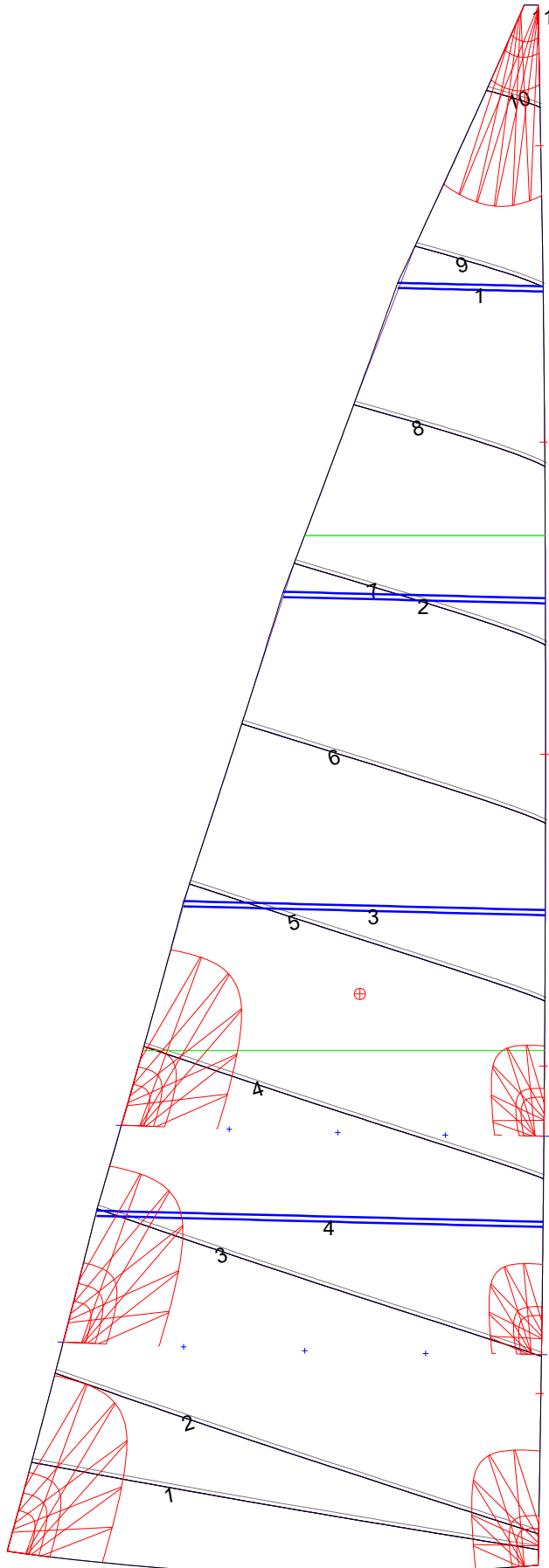
Luff Slides

1, Position: 52.29In
 2, Position: 152.06In
 3, Position: 247.02In
 4, Position: 342.00In
 5, Position: 432.35In

Luff Curve

		Fanned Luff (@ 5.00% [8.08In])	Before BSeam
475.18In,	0.00In	100% (475.20In) :	0.00In
415.97In,	-1.10In	90% (427.69In) :	0.62In
356.39In,	-1.88In	80% (380.16In) :	1.16In
296.66In,	-2.22In	70% (332.64In) :	1.47In
237.59In,	-2.26In	60% (285.12In) :	1.57In
177.06In,	-2.09In	50% (237.60In) :	1.57In
118.80In,	-1.67In	40% (190.08In) :	1.46In
59.21In,	-0.95In	30% (142.56In) :	1.23In
0.00In,	0.00In	20% (95.04In) :	0.90In
		10% (47.52In) :	0.45In
		0% (0.00In) :	0.00In

Mainsail: 7000911 Jordan S2 Mainsail.des



Seam Allowances			
Zone: 1	Split	Radial	Cross
	1.181In	1.181In	1.181In

Edge Excesses			
Sail:	Luff	Leech	Foot
	0.000In	0.000In	0.000In

Total Seam Lengths (In)

Horizontal	1023.64
Radial/Vertical	0.00
Bi-Radial Split	0.00

Materials

Material	Area (Ft ²)	Panels
Material 1	321.80	1,2,3,4,5 6,7,8,9,10 11