

Spinnaker: 7000901 Ian sym spinnaker.des

Design Info
=====

Design File:
\\NAS\Engineering files\Queenie-Customer Order\Fareast Sails\2023 Order\Need to be Confirmed Order\7000901 Ian\

Initial Design Date: 6/9/2023
Boat:

Comments:

Client:

Design Data
=====

Spinnaker

Measurements

Leech length (SLE): 12.600m
Foot length (SFL): 6.880m
Headboard Width: 0.010m
Maximum width (0.5%): 6.880m
Three-quarter width: 4.642m
Half width (SHW): 6.535m
Quarter width: 6.840m
Foot median: 13.653m
ORC Spinnaker Area: 69.339m?
IRC Spinnaker Area: 69.062m?
Surface Area: 76.260m?
Hoist height: 13.200m
Pole Length: 4.500m

Luff Curve

15.500m, 0.000m
11.625m, 0.000m
7.750m, 0.000m
3.875m, 0.000m
0.000m, 0.000m

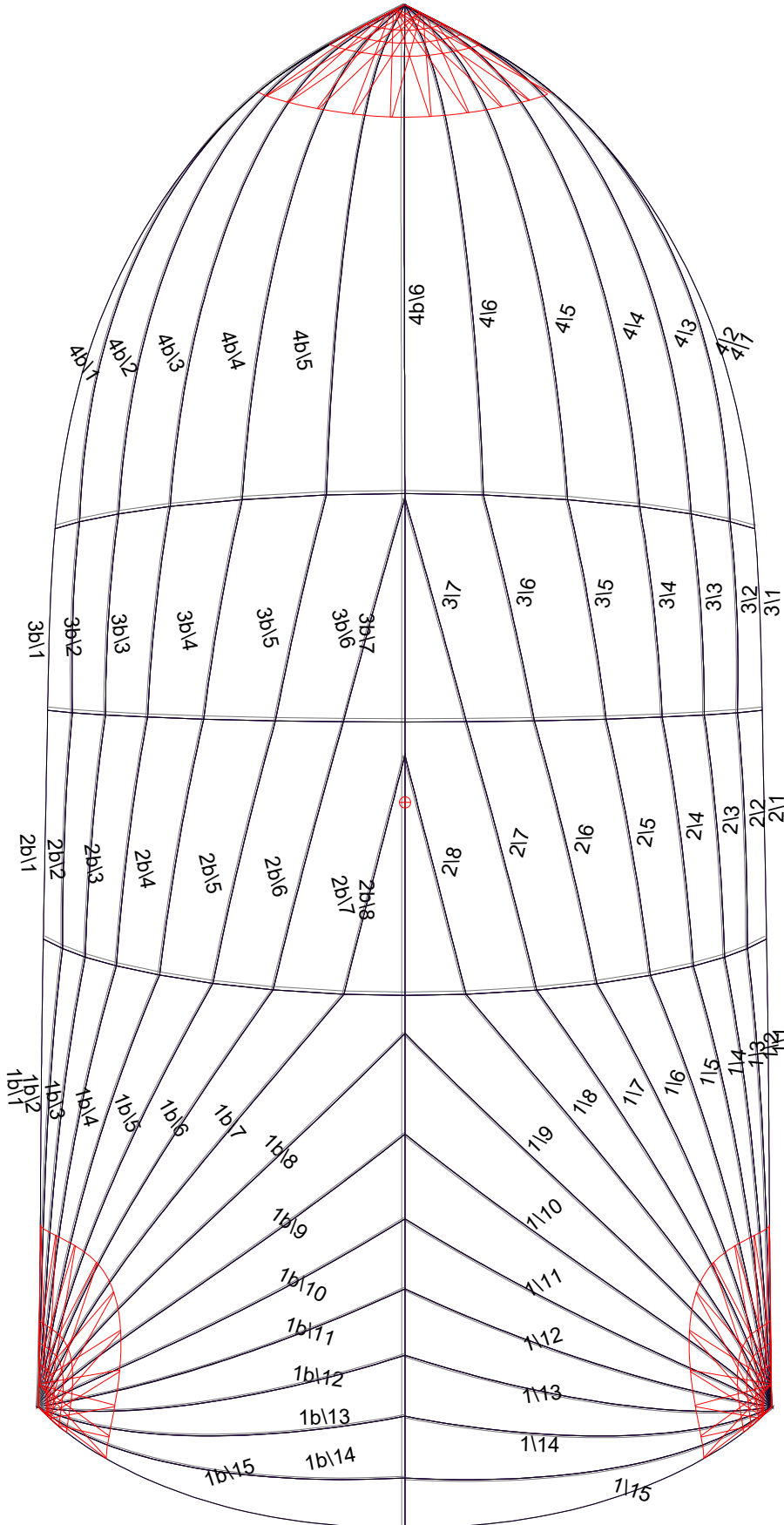
Fanned Luff (@ 5.00% [0.281m])

100% (6.990m) : 0.000m
119% (8.319m) : 2.639m
109% (7.632m) : 1.162m
86% (6.005m) : -0.294m
55% (3.846m) : -0.479m
61% (4.272m) : 0.457m
52% (3.618m) : 1.167m
38% (2.676m) : 1.841m
24% (1.684m) : 1.402m
13% (0.888m) : 0.718m
0% (0.000m) : 0.000m

Before BSeam

0.000m
2.166m
2.508m
2.528m
2.320m
2.000m
1.649m
1.272m
0.866m
0.438m
0.000m

Spinnaker: 7000901 lan sym spinnaker.des



Seam Allowances

Zone:	Split	Radial	Cross
Zone: 1/a	0.025m	0.013m	0.025m
Zone: 1/b	0.025m	0.013m	0.025m
Zone: 2/a	0.025m	0.013m	0.025m
Zone: 2/b	0.025m	0.013m	0.025m
Zone: 3/a	0.025m	0.013m	0.025m
Zone: 3/b	0.025m	0.013m	0.025m
Zone: 4/a	0.025m	0.013m	0.025m
Zone: 4/b	0.025m	0.013m	0.025m

Edge Excesses

Sail:	Luff	Leech	Foot
	0.000m	0.000m	0.000m

Total Seam Lengths (m)

Horizontal	19.77
Radial/Vertical	221.47
Bi-Radial Split	13.94

Materials

Material	Area (m ²)	Panels
Material 1	74.61	1\1,1\2,1\3,1\4,1\5 1\6,1\7,1\8,1\9,1\10 1\11,1\12,1\13,1\14,1\15 1b\1,1b\2,1b\3,1b\4,1b\5 1b\6,1b\7,1b\8,1b\9,1b\10 1b\11,1b\12,1b\13,1b\14,1b\15 2\1,2\2,2\3,2\4,2\5 2\6,2\7,2\8,2b\8,2b\7 2b\6,2b\5,2b\4,2b\3,2b\2 2b\1,3\1,3\2,3\3,3\4 3\5,3\6,3\7,3b\7,3b\6 3b\5,3b\4,3b\3,3b\2,3b\1 4\1,4\2,4\3,4\4,4\5 4\6,4b\6,4b\5,4b\4,4b\3 4b\2,4b\1