

Mainsail: 7000816 Laurent-1 Main.des

Design Info
=====

Design File:
\\NAS\Engineering files\Queenie-Customer Order\Fareast Sails\2023 Order\Need Confrim Order\7000816 Laurent\700

Initial Design Date: 23/8/2023
Boat:

Comments:

Client:

Design Data
=====

Main

Measurements

Luff geodesic:	14.355m
Leech geodesic:	14.927m
Foot geodesic:	4.504m
Head geodesic:	0.133m
Upper width (MUW):	0.866m
Three-quarter width (MTW):	1.588m
Half width (MHW):	2.796m
Quarter width (MQW):	3.728m
Foot median:	14.637m
ORC Mainsail area:	37.441m?
Surface area:	38.295m?
Clew height:	0.100m
Mast rake:	0.000m

Battens

Position	Length	Roach	Angle	Luff	Leech	Full
80.000%	1.364m	0.260m	74.422?	11.480m	11.909m	Full
60.000%	2.404m	0.350m	74.422?	8.610m	8.932m	Full
40.000%	3.227m	0.298m	74.422?	5.741m	5.955m	Full
20.000%	3.905m	0.170m	74.422?	2.873m	2.977m	Full

Reefing Points

- 1, Luff: 2.153m ; Leech: 2.213m ; Offset: 0.000m ; Number Eyelets: 2
- 2, Luff: 4.305m ; Leech: 4.428m ; Offset: 0.000m ; Number Eyelets: 2
- 3, Luff: 6.458m ; Leech: 6.645m ; Offset: 0.000m ; Number Eyelets: 2

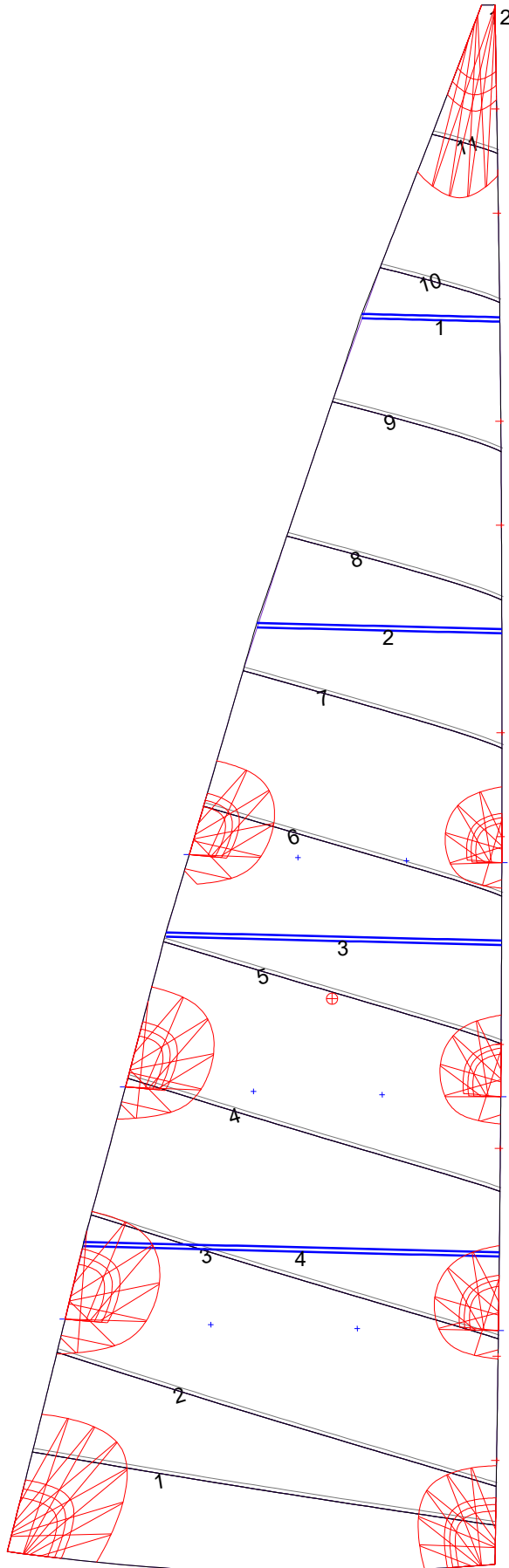
Luff Slides

- 1, Position: 0.958m
- 2, Position: 1.915m
- 3, Position: 3.829m
- 4, Position: 4.785m
- 5, Position: 6.698m
- 6, Position: 7.654m
- 7, Position: 9.567m
- 8, Position: 10.523m
- 9, Position: 12.438m
- 10, Position: 13.397m

Luff Curve

		Fanned Luff (@ 5.00% [0.224m])	Before BSeam
14.355m,	0.000m	100% (14.355m) :	0.000m
12.566m,	-0.030m	90% (12.920m) :	0.017m
10.766m,	-0.051m	80% (11.484m) :	0.033m
8.962m,	-0.062m	70% (10.049m) :	0.043m
7.177m,	-0.064m	60% (8.613m) :	0.046m
5.349m,	-0.060m	50% (7.178m) :	0.046m
3.589m,	-0.048m	40% (5.742m) :	0.042m
1.789m,	-0.027m	30% (4.306m) :	0.036m
0.000m,	0.000m	20% (2.871m) :	0.026m
		10% (1.436m) :	0.014m
		0% (0.000m) :	0.000m

Mainsail: 7000816 Laurent-1 Main.des



Seam Allowances			
Zone: 1	Split	Radial	Cross
	0.000m	0.000m	0.035m

Edge Excesses			
Sail:	Luff	Leech	Foot
	0.000m	0.000m	0.000m

Total Seam Lengths (m)

Horizontal	31.08
Radial/Vertical	0.00
Bi-Radial Split	0.00

Materials

Material	Area (m ²)	Panels
Material 1	38.33	1,2,3,4,5 6,7,8,9,10 11,12