

Genoa: 7000801 JPR Headsail.des

Design Info
=====

Design File:
\\NAS\Engineering files\Queenie-Customer Order\Fareast Sails\2023 Order\Need to be Confirmed\7000801 JPR\7000

Initial Design Date: 6/11/2023
Boat:

Comments:
LP=95%%

Client:

Design Data
=====

Genoa

Measurements

Luff geodesic:	9.460m
Leech geodesic:	8.783m
Foot geodesic:	3.200m
Headboard width:	0.030m
Luff perpendicular (HLP):	2.983m
Upper width (HUW):	0.335m
Three-quarter width (HTW):	0.656m
Half width (HHW):	1.365m
Quarter width (HQW):	2.150m
Foot median:	9.059m
ORC Headsail area:	13.491m?
IRC Headsail area:	13.458m?
Surface area:	13.509m?
Forestay height:	9.910m
J:	3.140m

Draft Stripes

1, Luff: 3.133m ; Leech: 2.727m ;
2, Luff: 6.261m ; Leech: 5.700m ;

Luff Curve

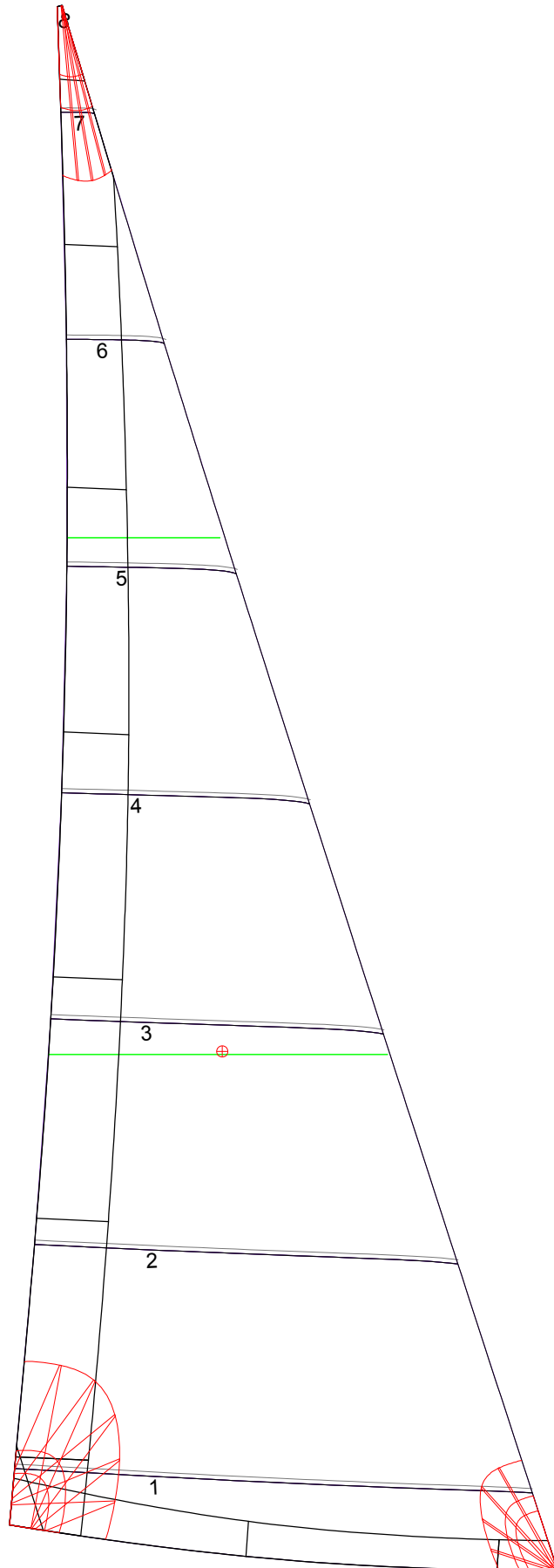
9.459m,	0.000m
8.673m,	0.024m
7.804m,	0.043m
7.038m,	0.053m
6.149m,	0.057m
4.707m,	0.050m
3.074m,	0.034m
1.599m,	0.017m
0.000m,	0.000m

Fanned Luff (@ 5.00% [0.158m])

100% (9.459m) :	-0.000m	0.000m
90% (8.513m) :	-0.025m	-0.004m
80% (7.568m) :	-0.043m	-0.004m
70% (6.622m) :	-0.052m	0.001m
60% (5.676m) :	-0.054m	0.008m
50% (4.730m) :	-0.050m	0.015m
40% (3.784m) :	-0.043m	0.019m
30% (2.838m) :	-0.033m	0.020m
20% (1.892m) :	-0.023m	0.019m
10% (0.945m) :	-0.012m	0.012m
0% (0.000m) :	0.000m	0.000m

Before BSeam

Genoa: 7000801 JPR Headsail.des



Seam Allowances

Zone:	Split	Radial	Cross
Zone: 1	0.025m	0.025m	0.025m
Cover 1	0.025m	0.025m	0.025m
Cover 2	0.025m	0.025m	0.025m
Cover 3	0.000m	0.000m	0.000m
Cover 4	0.000m	0.000m	0.000m

Edge Excesses

	Luff	Leech	Foot
Sail:	0.000m	0.000m	0.000m
Cover 0	0.070m	0.100m	0.070m
Cover 1	0.070m	0.070m	0.100m
Cover 2	0.000m	0.070m	0.070m
Cover 3	0.000m	0.070m	0.070m

Total Seam Lengths (m)

Horizontal	10.90
Radial/Vertical	0.00
Bi-Radial Split	0.00

Materials

Material	Area (m ²)	Panels
Material 1	13.55	1,2,3,4,5 6,7,8