

Genoa: 7000717 Marek StaysailV1.des

Design Info
=====

Design File:
Y:\Queenie-Customer Order\Fareast Sails\2023 Order\Need Confrim Order\7000717 Marek\7000717 Marek StaysailV

Initial Design Date: 19/7/2023
Boat:

Comments:

Client:

Design Data
=====

Genoa

Measurements

Luff geodesic: 9.857m
 Leech geodesic: 8.534m
 Foot geodesic: 3.810m
 Headboard width: 0.050m
 Luff perpendicular (HLP): 3.271m
 Upper width (HUW): 0.465m
 Three-quarter width (HTW): 0.873m
 Half width (HHW): 1.663m
 Quarter width (HQW): 2.452m
 Foot median: 9.114m
 ORC Headsail area: 16.365m?
 IRC Headsail area: 16.395m?
 Surface area: 16.526m?
 Forestay height: 10.800m
 J: 3.500m

Battens

Position	Length	Roach	Angle	Luff	Leech	Full
15.000%	1.100m	-0.027m	98.992?	1.555m	1.273m	

Reefing Points

1, Luff: 1.491m ; Leech: 1.700m ; Offset: 0.000m ; Number Eyelets: 2

Draft Stripes

1, Luff: 3.275m ; Leech: 2.210m ;
 2, Luff: 6.528m ; Leech: 5.301m ;

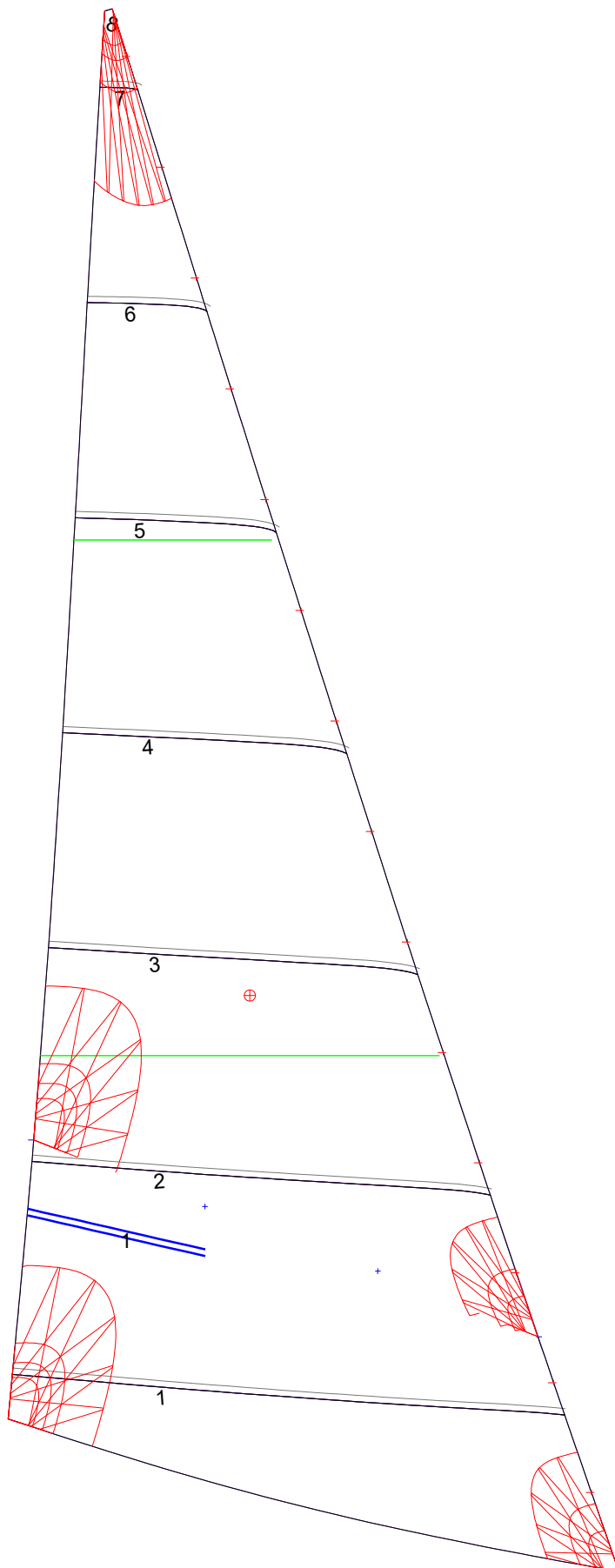
Luff Slides

1, Position: 0.500m
 2, Position: 1.197m
 3, Position: 1.893m
 4, Position: 2.590m
 5, Position: 3.287m
 6, Position: 3.983m
 7, Position: 4.680m
 8, Position: 5.377m
 9, Position: 6.074m
 10, Position: 6.770m
 11, Position: 7.467m
 12, Position: 8.164m
 13, Position: 8.860m
 14, Position: 9.557m

Luff Curve

		Fanned Luff (@ 5.00% [0.183m])	Before BSeam
9.855m,	0.000m	100% (9.855m) :	-0.000m 0.000m
7.391m,	0.061m	90% (8.870m) :	-0.025m 0.010m
4.927m,	0.078m	80% (7.884m) :	-0.053m 0.015m
2.464m,	0.058m	70% (6.899m) :	-0.073m 0.019m
0.000m,	0.000m	60% (5.913m) :	-0.086m 0.022m
		50% (4.927m) :	-0.091m 0.021m
		40% (3.942m) :	-0.089m 0.019m
		30% (2.956m) :	-0.079m 0.014m
		20% (1.971m) :	-0.060m 0.008m
		10% (0.984m) :	-0.032m 0.002m
		0% (0.000m) :	0.000m 0.000m

Genoa: 7000717 Marek StaysailV1.des



Seam Allowances			
Zone: 1	Split	Radial	Cross
	0.038m	0.038m	0.038m

Edge Excesses			
Sail:	Luff	Leech	Foot
	0.000m	0.000m	0.000m

Total Seam Lengths (m)

Horizontal	12.75
Radial/Vertical	0.00
Bi-Radial Split	0.00

Materials

Material	Area (m ²)	Panels
Material 1	16.56	1,2,3,4,5 6,7,8