

# Mainsail: 7000714 Yorgos-1 Mainsail.des

Design Info  
=====

Design File:  
\\NAS\Engineering files\Queenie-Customer Order\Fareast Sails\2023 Order\Need to be Confirmed\7000714 Yorgos\70

Initial Design Date: 23/9/2023  
Boat:

Comments:

Client:

Design Data  
=====

Main

## Measurements

Luff geodesic:	17.753m
Leech geodesic:	18.498m
Foot geodesic:	6.209m
Head geodesic:	0.160m
Upper width (MUW):	1.141m
Three-quarter width (MTW):	2.105m
Half width (MHW):	3.773m
Quarter width (MQW):	5.147m
Foot median:	18.091m
ORC Mainsail area:	63.081m?
Surface area:	64.600m?
Clew height:	0.281m
Mast rake:	0.000m

## Battens

Position	Length	Roach	Angle	Luff	Leech	Full
80.000%	1.805m	0.310m	74.008?	14.188m	14.750m	Full
60.000%	3.221m	0.438m	74.008?	10.637m	11.062m	Full
40.000%	4.414m	0.399m	74.008?	7.087m	7.375m	Full
20.000%	5.406m	0.241m	74.008?	3.539m	3.687m	Full

## Reefing Points

1, Luff: 2.217m ; Leech: 2.284m ; Offset: 0.000m ; Number Eyelets: 4  
2, Luff: 4.879m ; Leech: 5.024m ; Offset: 0.000m ; Number Eyelets: 4

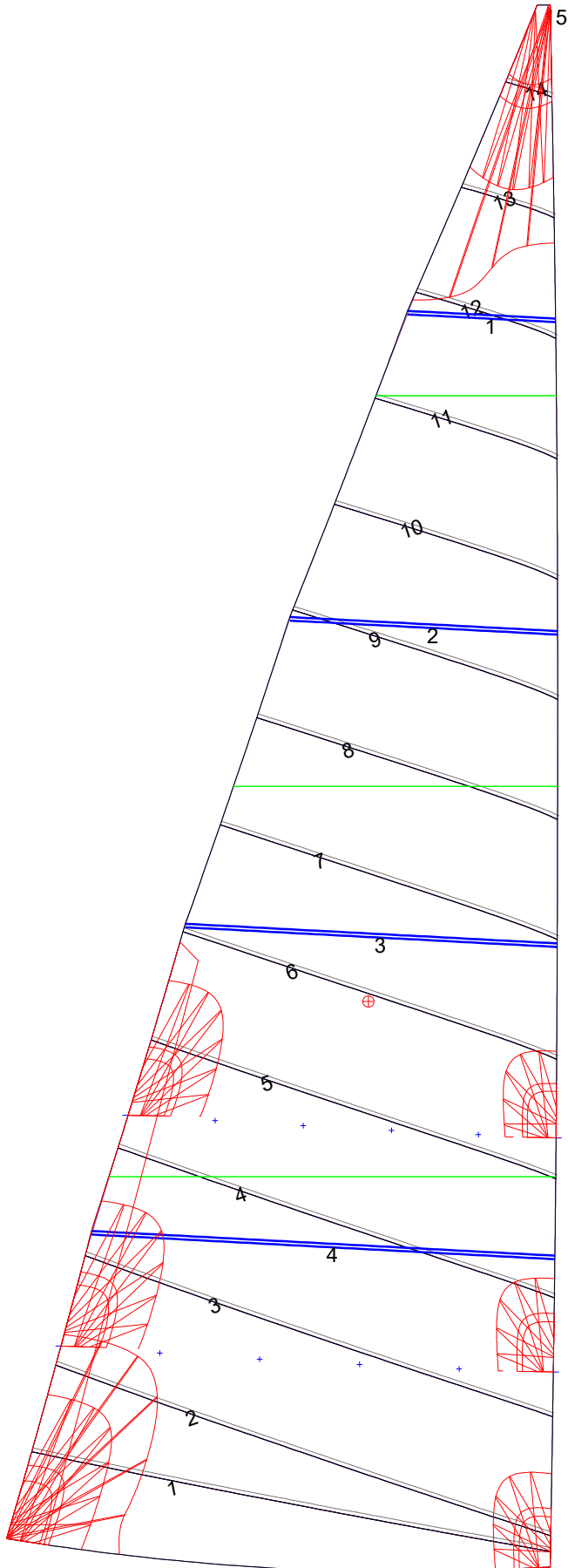
## Draft Stripes

1, Luff: 4.435m ; Leech: 4.290m ;  
2, Luff: 8.872m ; Leech: 8.949m ;  
3, Luff: 13.311m ; Leech: 13.658m ;

## Luff Curve

		Fanned Luff (@ 5.00% [0.309m])	Before BSeam
17.752m,	0.000m	100% (17.753m) :	0.000m
15.540m,	-0.041m	90% (15.978m) :	0.066m
13.314m,	-0.070m	80% (14.202m) :	0.125m
11.083m,	-0.083m	70% (12.427m) :	0.164m
8.876m,	-0.084m	60% (10.652m) :	0.186m
6.615m,	-0.078m	50% (8.877m) :	0.193m
4.438m,	-0.062m	40% (7.101m) :	0.188m
2.212m,	-0.035m	30% (5.326m) :	0.167m
0.000m,	0.000m	20% (3.550m) :	0.125m
		10% (1.776m) :	0.062m
		0% (0.000m) :	0.000m

# Mainsail: 7000714 Yorgos-1 Mainsail.des



Seam Allowances			
Zone: 1	Split	Radial	Cross
	0.045m	0.045m	0.045m

Edge Excesses			
Sail:	Luff	Leech	Foot
	0.000m	0.000m	0.000m

## Total Seam Lengths (m)

Horizontal	52.82
Radial/Vertical	0.00
Bi-Radial Split	0.00

## Materials

Material	Area (m <sup>2</sup> )	Panels
Material 1	64.65	1,2,3,4,5 6,7,8,9,10 11,12,13,14,15