

# Genoa: 7000712 Edward-2 Lagoon 39 Selftacking jibV1.des

## Fareast Sails/Michael,

Design Info

=====

Design File:

\\NAS\Engineering files\Queenie-Customer Order\Fareast Sails\2023 Order\Need Confrim Order\7000712 Edward\700

Comments:

Initial Design Date: 26/7/2023

Boat:

Lagoon 39

Client:

Fareast Sails/Michael,

Design Data

=====

Genoa

Measurements

Luff geodesic:	13.690m
Leech geodesic:	12.000m
Foot geodesic:	5.330m
Headboard width:	0.030m
Luff perpendicular (HLP):	4.661m
Upper width (HUW):	0.511m
Three-quarter width (HTW):	1.014m
Half width (HHW):	2.120m
Quarter width (HQW):	3.349m
Foot median:	12.711m
ORC Headsail area:	30.372m?
IRC Headsail area:	30.314m?
Surface area:	30.541m?
Forestay height:	13.220m
J:	6.210m

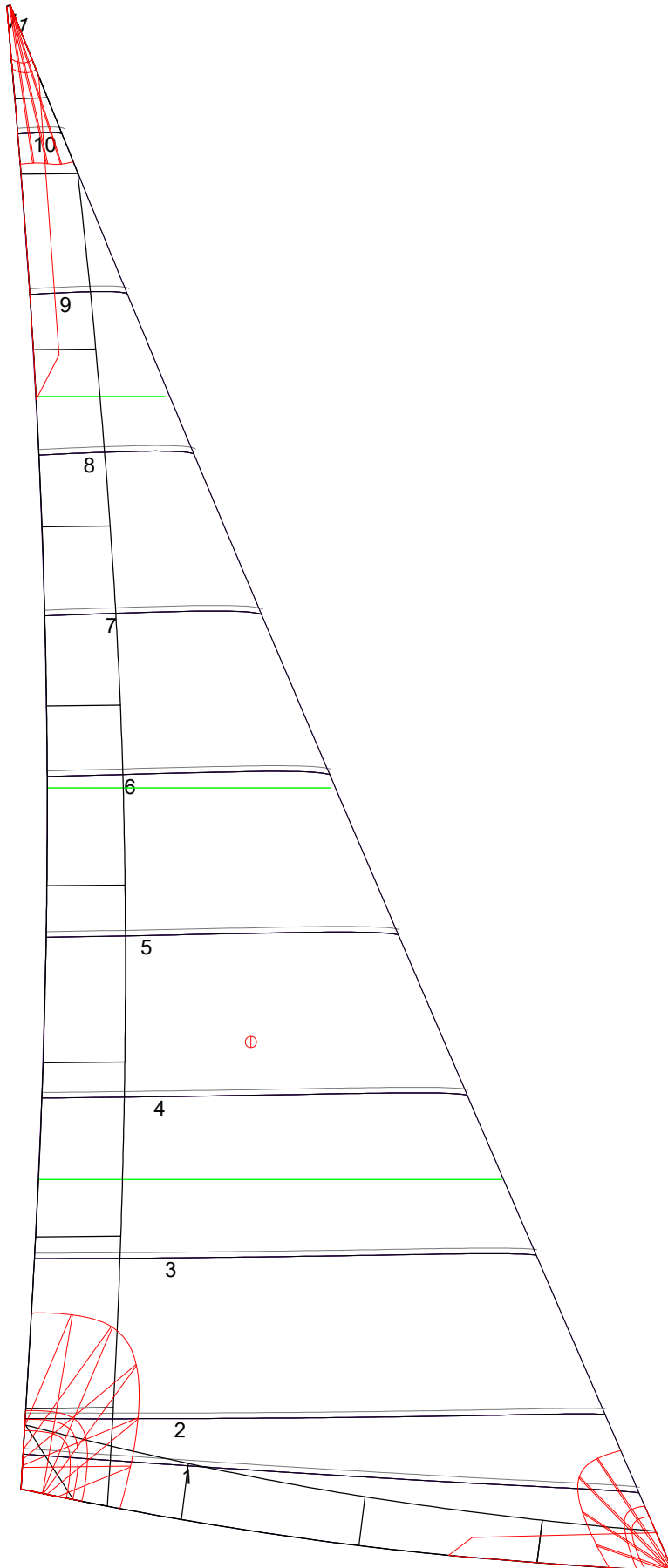
Draft Stripes

- 1, Luff: 3.439m ; Leech: 2.511m ;
- 2, Luff: 6.876m ; Leech: 5.663m ;
- 3, Luff: 10.300m ; Leech: 8.802m ;

Luff Curve

		Fanned Luff (@ 5.00% [0.262m])	Before BSeam
13.688m,	0.000m	100% (13.689m) :	0.000m -0.000m
12.551m,	0.036m	90% (12.319m) :	-0.039m -0.006m
11.293m,	0.065m	80% (10.952m) :	-0.067m -0.007m
10.185m,	0.080m	70% (9.582m) :	-0.082m -0.000m
8.898m,	0.085m	60% (8.214m) :	-0.085m 0.010m
6.812m,	0.075m	50% (6.845m) :	-0.078m 0.019m
4.449m,	0.051m	40% (5.476m) :	-0.066m 0.026m
2.314m,	0.025m	30% (4.106m) :	-0.051m 0.027m
0.000m,	0.000m	20% (2.738m) :	-0.035m 0.023m
		10% (1.368m) :	-0.018m 0.014m
		0% (0.000m) :	0.000m 0.000m

# Genoa: 7000712 Edward-2 Lagoon 39 Selftacking jibV1.des Fareast Sails/Michael,



Seam Allowances			
Zone:	Split	Radial	Cross
Zone: 1	0.045m	0.045m	0.045m
Cover 1	0.025m	0.025m	0.025m
Cover 2	0.025m	0.025m	0.025m
Cover 3	0.000m	0.000m	0.000m
Cover 4	0.000m	0.000m	0.000m

Edge Excesses			
Sail:	Luff	Leech	Foot
Cover 0	0.070m	0.100m	0.070m
Cover 1	0.070m	0.070m	0.100m
Cover 2	0.000m	0.070m	0.070m
Cover 3	0.000m	0.070m	0.070m

### Total Seam Lengths (m)

Horizontal	27.18
Radial/Vertical	0.00
Bi-Radial Split	0.00

### Materials

Material	Area (m <sup>2</sup> )	Panels
Material 1	30.63	1,2,3,4,5 6,7,8,9,10 11