

Mainsail: 7000710 Charles Grand Soleil 46.3 Mainsail.des

Design Info
=====

Design File:
\\NAS\Engineering files\Queenie-Customer Order\Fareast Sails\2023 Order\Need Confrim Order\7000710 Charles\700

Initial Design Date: 12/7/2023
Boat:

Comments:

Client:

Design Data
=====

Main

Measurements

Luff geodesic:	15.661m
Leech geodesic:	16.318m
Foot geodesic:	5.029m
Head geodesic:	0.152m
Upper width (MUW):	1.003m
Three-quarter width (MTW):	1.824m
Half width (MHW):	3.188m
Quarter width (MQW):	4.214m
Foot median:	15.983m
ORC Mainsail area:	46.292m?
Surface area:	47.378m?
Clew height:	0.030m
Mast rake:	0.000m

Battens

Position	Length	Roach	Angle	Luff	Leech	Full
82.000%	1.451m	0.317m	73.073?	12.855m	13.340m	Full
62.000%	2.657m	0.451m	73.073?	9.742m	10.087m	Full
42.000%	3.594m	0.404m	73.073?	6.629m	6.833m	Full
22.000%	4.342m	0.250m	73.073?	3.516m	3.579m	Full

Reefing Points

1, Luff: 2.035m ; Leech: 2.093m ; Offset: 0.000m ; Number Eyelets: 3
2, Luff: 4.305m ; Leech: 4.424m ; Offset: 0.000m ; Number Eyelets: 3

Draft Stripes

1, Luff: 3.914m ; Leech: 3.908m ;
2, Luff: 7.829m ; Leech: 7.974m ;
3, Luff: 11.744m ; Leech: 12.086m ;

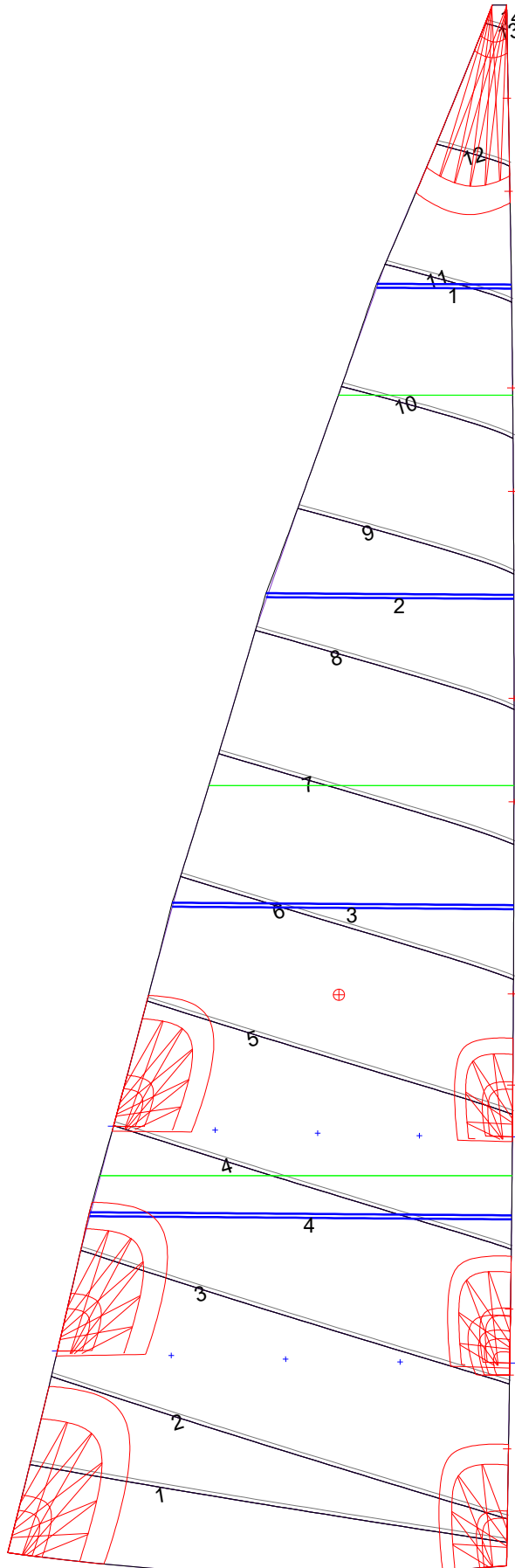
Luff Slides

1, Position: 1.172m
2, Position: 2.576m
3, Position: 4.823m
4, Position: 5.738m
5, Position: 7.666m
6, Position: 8.704m
7, Position: 10.779m
8, Position: 11.817m
9, Position: 13.790m
10, Position: 14.726m

Luff Curve

		Fanned Luff (@ 5.00% [0.250m])	Before BSeam
15.660m,	0.000m	100% (15.661m) :	0.000m
13.709m,	-0.036m	90% (14.095m) :	0.057m
11.745m,	-0.062m	80% (12.529m) :	0.111m
9.777m,	-0.073m	70% (10.963m) :	0.154m
7.830m,	-0.074m	60% (9.397m) :	0.176m
5.835m,	-0.069m	50% (7.831m) :	0.178m
3.915m,	-0.055m	40% (6.264m) :	0.163m
1.952m,	-0.031m	30% (4.698m) :	0.132m
0.000m,	0.000m	20% (3.132m) :	0.092m
		10% (1.566m) :	0.044m
		0% (0.000m) :	0.000m

Mainsail: 7000710 Charles Grand Soleil 46.3 Mainsail.des



Seam Allowances			
Zone: 1	Split	Radial	Cross
	0.039m	0.039m	0.039m

Edge Excesses			
Sail:	Luff	Leech	Foot
	0.000m	0.000m	0.000m

Total Seam Lengths (m)

Horizontal	39.15
Radial/Vertical	0.00
Bi-Radial Split	0.00

Materials

Material	Area (m ²)	Panels
Material 1	47.43	1,2,3,4,5 6,7,8,9,10 11,12,13,14