

Genoa: 7000708 Chris-2 genoa hanks.des

Design Info
=====

Design File:
\\NAS\Engineering files\Queenie-Customer Order\Fareast Sails\2023 Order\Need Confrim Order\7000708 Chris\70007

Initial Design Date: 10/7/2023
Boat:

Comments:

Client:

Design Data
=====

Genoa

Measurements

Luff geodesic:	11.583m
Leech geodesic:	11.000m
Foot geodesic:	6.000m
Headboard width:	0.050m
Luff perpendicular (HLP):	5.671m
Upper width (HUW):	0.646m
Three-quarter width (HTW):	1.279m
Half width (HHW):	2.678m
Quarter width (HQW):	4.152m
Foot median:	11.082m
ORC Headsail area:	31.851m?
IRC Headsail area:	31.766m?
Surface area:	32.116m?
Forestay height:	12.100m
J:	4.550m

Luff Slides

- 1, Position: 0.550m
- 2, Position: 1.313m
- 3, Position: 2.076m
- 4, Position: 2.839m
- 5, Position: 3.602m
- 6, Position: 4.365m
- 7, Position: 5.128m
- 8, Position: 5.891m
- 9, Position: 6.655m
- 10, Position: 7.418m
- 11, Position: 8.181m
- 12, Position: 8.944m
- 13, Position: 9.707m
- 14, Position: 10.470m
- 15, Position: 11.233m

Luff Curve

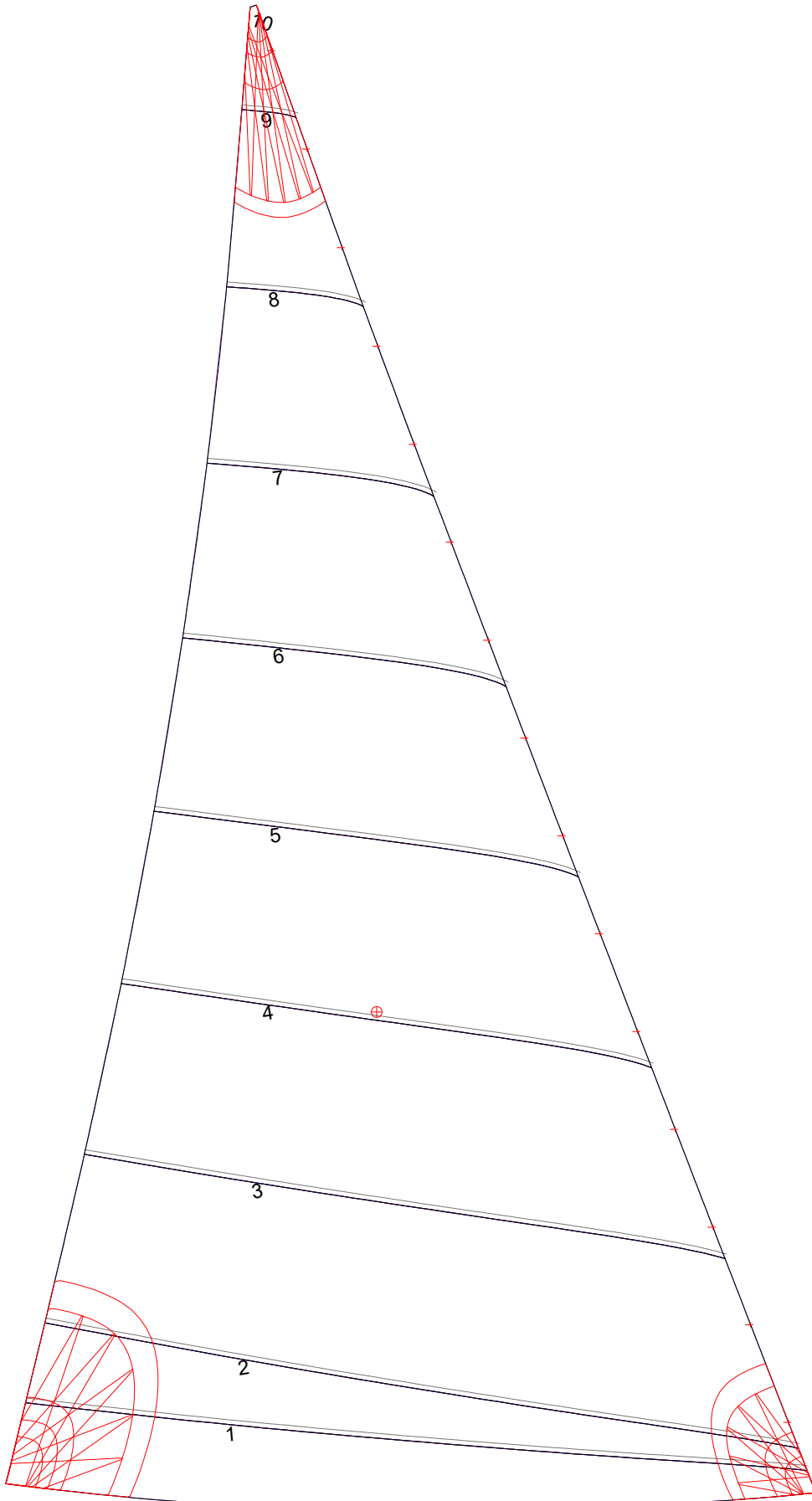
11.581m,	0.000m
10.618m,	0.039m
9.554m,	0.071m
8.617m,	0.087m
7.528m,	0.094m
5.763m,	0.082m
3.764m,	0.056m
1.957m,	0.028m
0.000m,	0.000m

Fanned Luff (@ 5.00% [0.295m])

100% (11.581m) :	-0.000m	-0.000m
90% (10.421m) :	-0.044m	-0.001m
80% (9.267m) :	-0.080m	0.004m
70% (8.107m) :	-0.096m	0.026m
60% (6.949m) :	-0.095m	0.052m
50% (5.791m) :	-0.087m	0.067m
40% (4.633m) :	-0.074m	0.072m
30% (3.474m) :	-0.057m	0.070m
20% (2.317m) :	-0.039m	0.059m
10% (1.157m) :	-0.021m	0.034m
0% (0.000m) :	0.000m	0.000m

Before BSeam

Genoa: 7000708 Chris-2 genoa hanks.des



Seam Allowances			
Zone: 1	Split	Radial	Cross
	0.035m	0.035m	0.035m

Edge Excesses			
Sail:	Luff	Leech	Foot
	0.000m	0.000m	0.000m

Total Seam Lengths (m)

Horizontal	29.64
Radial/Vertical	0.00
Bi-Radial Split	0.00

Materials

Material	Area (m ²)	Panels
Material 1	32.20	1,2,3,4,5 6,7,8,9,10