

Genoa: 7000707 Des Farr5000 Jib.des

Design Info
=====

Design File:
\\NAS\Engineering files\Queenie-Customer Order\Fareast Sails\2023 Order\Need Confrim Order\7000707 Des\700070

Initial Design Date: 3/8/2023
Boat:

Comments:

Client:

Design Data
=====

Genoa

Measurements

Luff geodesic:	4.950m
Leech geodesic:	4.460m
Foot geodesic:	1.880m
Headboard width:	0.045m
Luff perpendicular (HLP):	1.697m
Upper width (HUW):	0.219m
Three-quarter width (HTW):	0.401m
Half width (HHW):	0.795m
Quarter width (HQW):	1.230m
Foot median:	4.670m
ORC Headsail area:	4.092m?
IRC Headsail area:	4.084m?
Surface area:	4.134m?
Forestay height:	5.500m
J:	1.720m

Draft Stripes

1, Luff: 2.484m ; Leech: 2.085m ;

Luff Curve

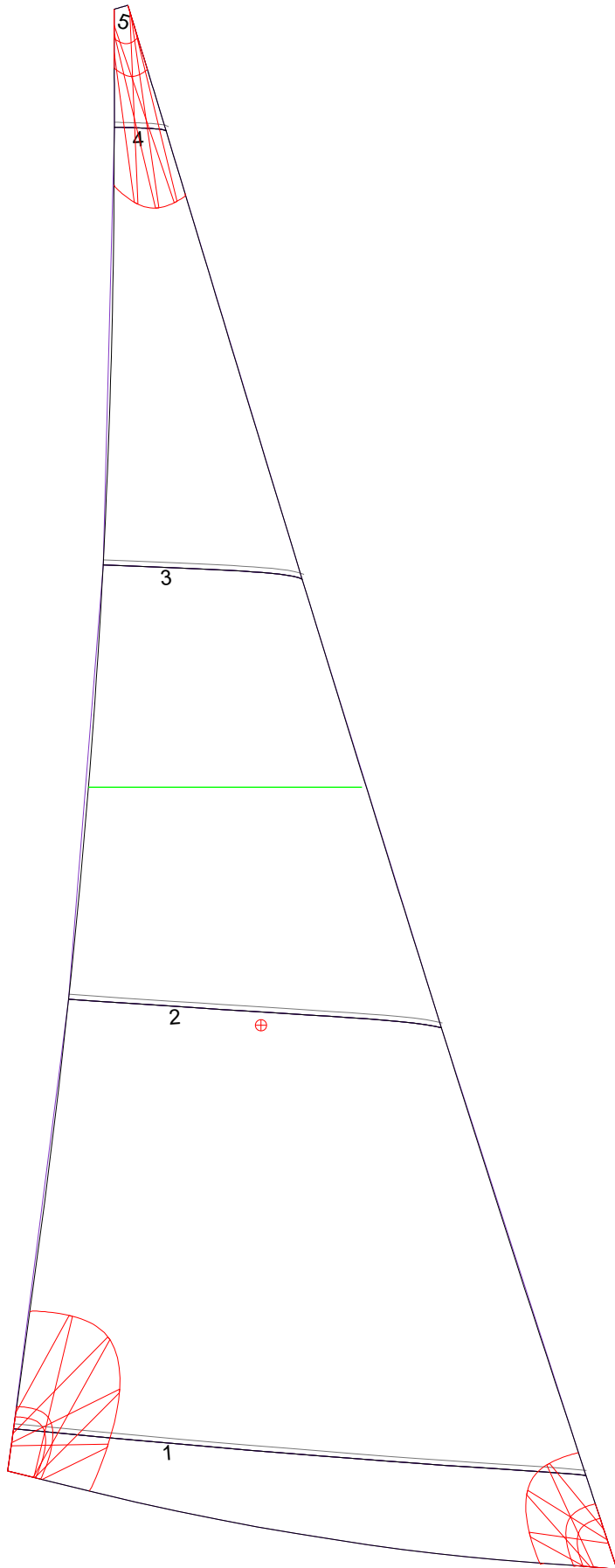
4.949m,	0.000m
3.712m,	0.022m
2.475m,	0.030m
1.237m,	0.022m
0.000m,	0.000m

Fanned Luff (@ 5.00% [0.092m])

100% (4.949m) :	0.000m	-0.000m
90% (4.455m) :	-0.008m	0.004m
80% (3.960m) :	-0.018m	0.006m
70% (3.465m) :	-0.025m	0.007m
60% (2.970m) :	-0.030m	0.008m
50% (2.475m) :	-0.032m	0.009m
40% (1.980m) :	-0.031m	0.009m
30% (1.485m) :	-0.028m	0.008m
20% (0.990m) :	-0.021m	0.006m
10% (0.494m) :	-0.011m	0.005m
0% (0.000m) :	0.000m	0.000m

Before BSeam

Genoa: 7000707 Des Farr5000 Jib.des



Seam Allowances			
Zone: 1	Split	Radial	Cross
	0.000m	0.000m	0.015m

Edge Excesses			
Sail:	Luff	Leech	Foot
	0.000m	0.000m	0.000m

Total Seam Lengths (m)

Horizontal	3.75
Radial/Vertical	0.00
Bi-Radial Split	0.00

Materials

Material	Area (m ²)	Panels
Material 1	4.15	1,2,3,4,5