

Mainsail: 7000701 Nigel Mainsail.des

Design Info
=====

Design File:
\\NAS\Engineering files\Queenie-Customer Order\Fareast Sails\2023 Order\Need Confrim Order\7000701 Nigel\70007

Initial Design Date: 5/7/2023
Boat:

Comments:

Client:

Design Data
=====

Main

Measurements

Luff geodesic:	15.200m
Leech geodesic:	15.670m
Foot geodesic:	4.210m
Head geodesic:	0.135m
Upper width (MUW):	0.860m
Three-quarter width (MTW):	1.548m
Half width (MHW):	2.691m
Quarter width (MQW):	3.539m
Foot median:	15.447m
ORC Mainsail area:	37.848m?
Surface area:	38.559m?
Clew height:	0.100m
Mast rake:	0.000m

Battens

Position	Length	Roach	Angle	Luff	Leech	Full
82.500%	1.196m	0.259m	76.263?	12.535m	12.897m	Full
62.000%	2.236m	0.377m	76.263?	9.420m	9.693m	Full
42.000%	3.019m	0.338m	76.263?	6.382m	6.566m	Full
21.500%	3.654m	0.205m	76.263?	3.269m	3.361m	Full

Reefing Points

1, Luff: 1.975m ; Leech: 2.017m ; Offset: 0.000m ; Number Eyelets: 3
2, Luff: 4.103m ; Leech: 4.186m ; Offset: 0.000m ; Number Eyelets: 3
3, Luff: 6.838m ; Leech: 6.982m ; Offset: 0.000m ; Number Eyelets: 2

Draft Stripes

1, Luff: 3.799m ; Leech: 3.791m ;
2, Luff: 7.598m ; Leech: 7.700m ;
3, Luff: 11.398m ; Leech: 11.642m ;

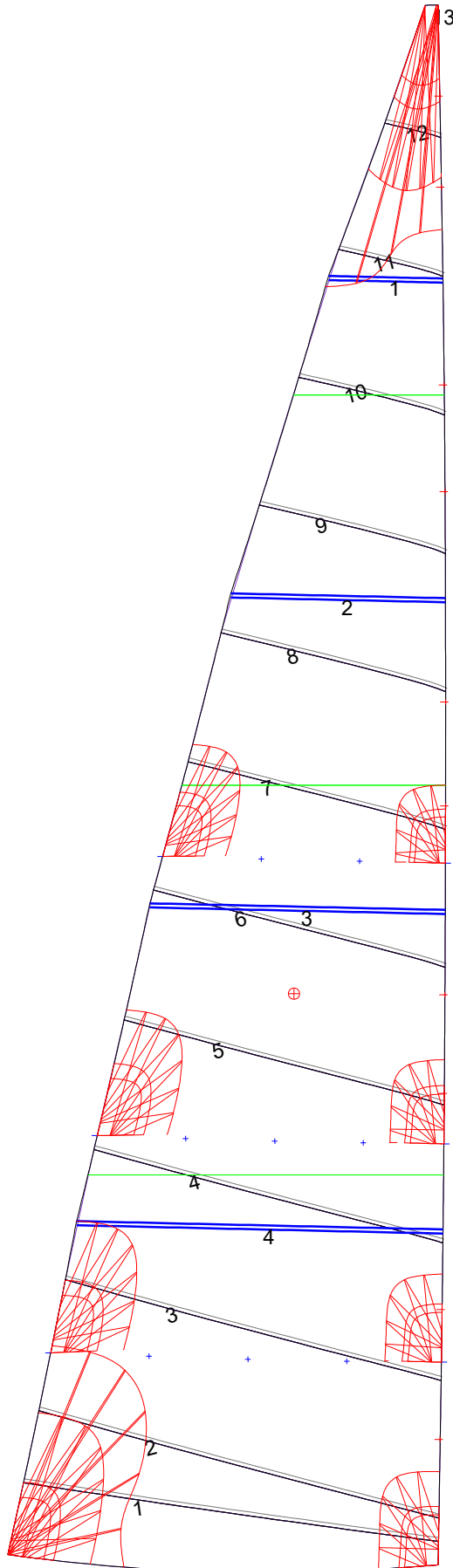
Luff Slides

1, Position: 1.223m
2, Position: 2.487m
3, Position: 4.594m
4, Position: 5.555m
5, Position: 7.395m
6, Position: 8.408m
7, Position: 10.459m
8, Position: 11.497m
9, Position: 13.423m
10, Position: 14.312m

Luff Curve

		Fanned Luff (@ 5.00% [0.210m])	Before BSeam
15.199m,	0.000m	100% (15.200m) :	0.000m
13.305m,	-0.035m	90% (13.680m) :	0.053m
11.400m,	-0.060m	80% (12.160m) :	0.102m
9.489m,	-0.071m	70% (10.640m) :	0.140m
7.600m,	-0.072m	60% (9.120m) :	0.160m
5.663m,	-0.067m	50% (7.600m) :	0.162m
3.800m,	-0.053m	40% (6.080m) :	0.148m
1.894m,	-0.030m	30% (4.560m) :	0.121m
0.000m,	0.000m	20% (3.040m) :	0.084m
		10% (1.520m) :	0.041m
		0% (0.000m) :	0.000m

Mainsail: 7000701 Nigel Mainsail.des



Seam Allowances			
Zone: 1	Split	Radial	Cross
	0.038m	0.038m	0.038m

Edge Excesses			
Sail:	Luff	Leech	Foot
	0.000m	0.000m	0.000m

Total Seam Lengths (m)

Horizontal	32.46
Radial/Vertical	0.00
Bi-Radial Split	0.00

Materials

Material	Area (m ²)	Panels
Material 1	38.60	1,2,3,4,5 6,7,8,9,10 11,12,13