

Mainsail: 7000626 Eduard-1 Farr30 MainsailV2.des

Design Info

=====

Initial Design Date: 14/7/2023

Boat:

Farr 30

Client:

Design File:

\\NAS\Engineering files\Queenie-Customer Order\Fareast Sails\2023 Order\Need Confrim Order\7000626 Eduard\7000626 Eduard-1 Farr30 MainsailV2.des

Comments:

Design Data

=====

Main

Measurements

Luff geodesic:	12.030m
Leech geodesic:	12.666m
Foot geodesic:	4.340m
Head geodesic:	0.170m
Upper width (MUW):	1.074m
Three-quarter width (MTW):	1.948m
Half width (MHW):	3.154m
Quarter width (MQW):	3.932m
Foot median:	12.349m
ORC Mainsail area:	33.974m ²
Surface area:	35.446m ²
Clew height:	0.113m
Mast rake:	0.000m

Battens

Position	Length	Roach	Angle	Luff	Leech	Full
81.581%	1.714m	0.579m	70.746°	9.828m	10.282m	Full
63.350%	2.704m	0.686m	70.746°	7.658m	7.985m	Full
44.294%	3.448m	0.609m	70.746°	5.389m	5.583m	Full
25.023%	3.962m	0.391m	70.746°	3.095m	3.154m	Full

Reefing Points

- 1, Luff: 1.624m ; Leech: 1.662m ; Offset: 0.000m ; Number Eyelets: 3
- 2, Luff: 3.307m ; Leech: 3.382m ; Offset: 0.000m ; Number Eyelets: 3
- 3, Luff: 4.749m ; Leech: 4.865m ; Offset: 0.000m ; Number Eyelets: 3

Draft Stripes

- 1, Luff: 2.947m ; Leech: 2.907m ;
- 2, Luff: 5.951m ; Leech: 6.021m ;
- 3, Luff: 8.956m ; Leech: 9.197m ;

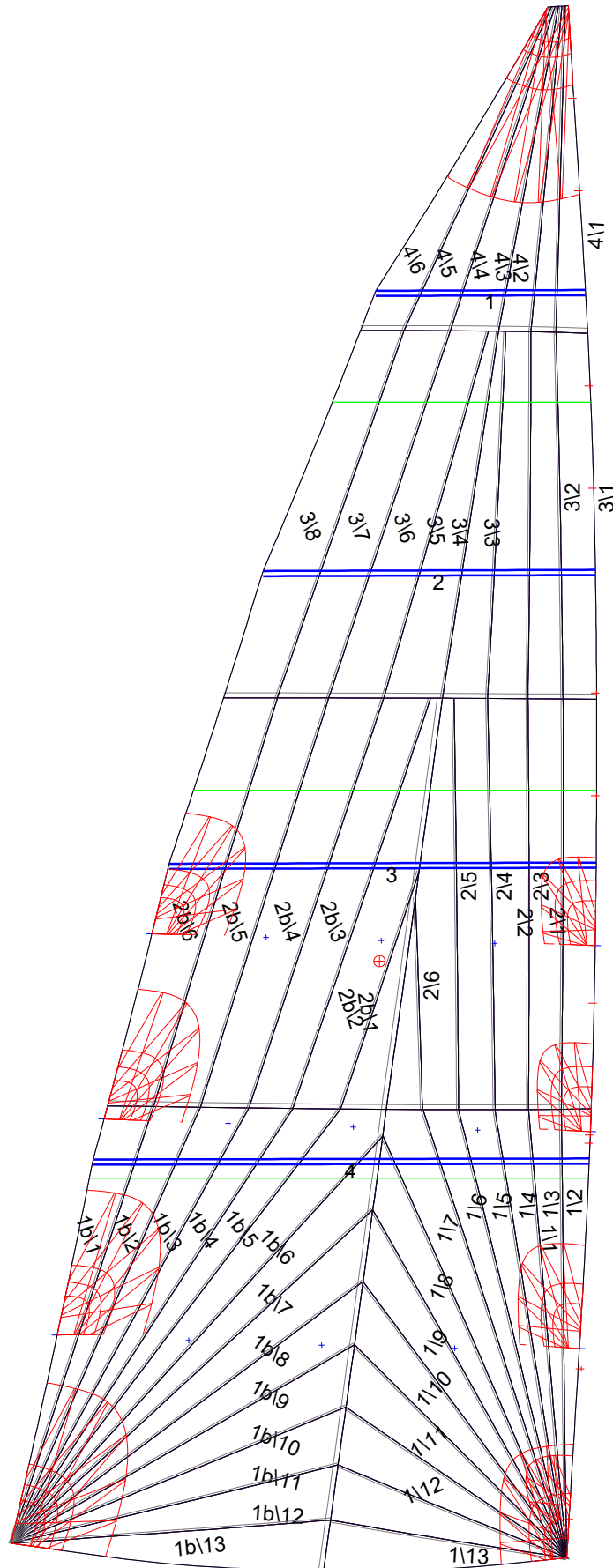
Luff Slides

- 1, Position: 3.279m
- 2, Position: 1.466m
- 3, Position: 3.216m
- 4, Position: 4.300m
- 5, Position: 5.908m
- 6, Position: 6.702m
- 7, Position: 8.289m
- 8, Position: 9.083m
- 9, Position: 10.595m
- 10, Position: 11.312m

Luff Curve

		Fanned Luff (@ 5.00% [0.215m])	Before BSeam
12.025m,	0.000m	100% (12.030m) :	0.000m
9.019m,	-0.175m	90% (10.828m) :	0.057m
6.013m,	-0.225m	80% (9.625m) :	0.112m
3.006m,	-0.168m	70% (8.422m) :	0.150m
0.000m,	0.000m	60% (7.219m) :	0.168m
		50% (6.015m) :	0.172m
		40% (4.811m) :	0.165m
		30% (3.608m) :	0.145m
		20% (2.405m) :	0.107m
		10% (1.203m) :	0.054m
		0% (0.000m) :	0.000m

Mainsail: 7000626 Eduard-1 Farr30 MainsailV2.des



Seam Allowances

Zone:	Split	Radial	Cross
Zone: 1/a	0.038m	0.016m	0.038m
Zone: 1/b	0.038m	0.016m	0.038m
Zone: 2/a	0.038m	0.016m	0.038m
Zone: 2/b	0.038m	0.016m	0.038m
Zone: 3	0.038m	0.016m	0.038m
Zone: 4	0.038m	0.016m	0.038m

Edge Excesses

Sail:	Luff	Leech	Foot
Sail:	0.000m	0.000m	0.000m

Total Seam Lengths (m)

Horizontal	8.75
Radial/Vertical	141.83
Bi-Radial Split	7.16

Materials

Material	Area (m ²)	Panels
Material 1	35.44	1\1, 1\2, 1\3, 1\4, 1\5 1\6, 1\7, 1\8, 1\9, 1\10 1\11, 1\12, 1\13, 1b\1, 1b\2 1b\3, 1b\4, 1b\5, 1b\6, 1b\7 1b\8, 1b\9, 1b\10, 1b\11, 1b\12 1b\13, 2\1, 2\2, 2\3, 2\4 2\5, 2\6, 2b\1, 2b\2, 2b\3 2b\4, 2b\5, 2b\6, 3\1, 3\2 3\3, 3\4, 3\5, 3\6, 3\7 3\8, 4\1, 4\2, 4\3, 4\4 4\5, 4\6