

# Mainsail: 7000626 Eduard-1 Farr30 MainsailV1.des

## Design Info =====

Design File:  
\\NAS\Engineering files\Queenie-Customer Order\Fareast Sails\2023 Order\Need Confrim Order\7000626 Eduard\7000626 Eduard-1 Farr30 MainsailV1.des

Initial Design Date: 14/7/2023  
Boat:  
Farr 30  
Client:

Comments:

## Design Data =====

### Main

#### Measurements

Luff geodesic: 12.030m  
Leech geodesic: 12.666m  
Foot geodesic: 4.340m  
Head geodesic: 0.170m  
Upper width (MUW): 1.072m  
Three-quarter width (MTW): 1.949m  
Half width (MHW): 3.158m  
Quarter width (MQW): 3.930m  
Foot median: 12.319m  
ORC Mainsail area: 33.976m?  
Surface area: 35.306m?  
Clew height: -0.267m  
Mast rake: 0.000m

### Battens

Position	Length	Roach	Angle	Luff	Leech	Full
81.581%	1.711m	0.579m	70.746?	9.828m	10.281m	Full
63.350%	2.707m	0.686m	70.746?	7.658m	7.984m	Full
44.294%	3.448m	0.609m	70.746?	5.390m	5.582m	Full
25.023%	3.957m	0.391m	70.746?	3.096m	3.154m	Full

### Reefing Points

1, Luff: 1.626m ; Leech: 1.666m ; Offset: 0.000m ; Number Eyelets: 3  
2, Luff: 3.312m ; Leech: 3.387m ; Offset: 0.000m ; Number Eyelets: 3  
3, Luff: 4.755m ; Leech: 4.871m ; Offset: 0.000m ; Number Eyelets: 3

### Draft Stripes

1, Luff: 2.951m ; Leech: 2.913m ;  
2, Luff: 5.957m ; Leech: 6.028m ;  
3, Luff: 8.960m ; Leech: 9.201m ;

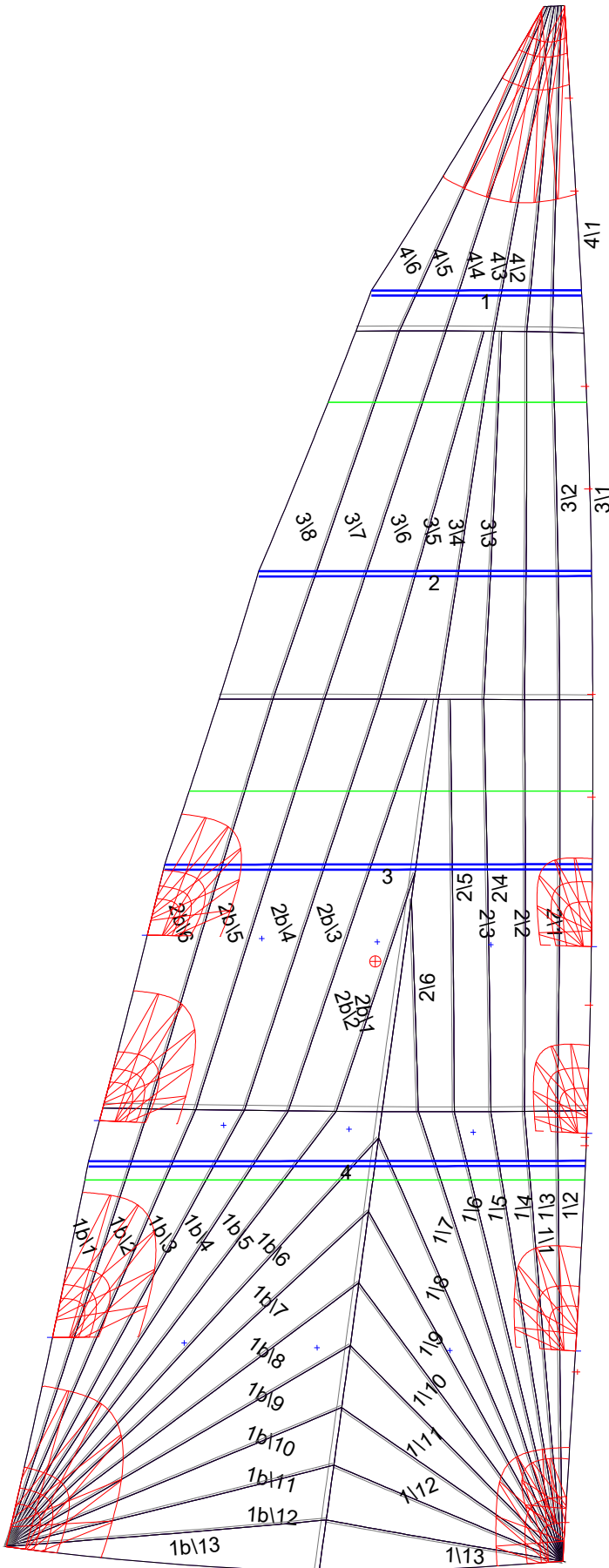
### Luff Slides

1, Position: 3.279m  
2, Position: 1.466m  
3, Position: 3.216m  
4, Position: 4.300m  
5, Position: 5.908m  
6, Position: 6.702m  
7, Position: 8.289m  
8, Position: 9.083m  
9, Position: 10.595m  
10, Position: 11.312m

### Luff Curve

		Fanned Luff (@ 5.00% [0.215m])	Before BSeam
12.025m,	0.000m	100% (12.030m) :	0.000m
9.018m,	-0.175m	90% (10.828m) :	0.093m
6.012m,	-0.225m	80% (9.625m) :	0.185m
3.006m,	-0.168m	70% (8.422m) :	0.254m
0.000m,	0.000m	60% (7.219m) :	0.291m
		50% (6.015m) :	0.298m
		40% (4.811m) :	0.285m
		30% (3.608m) :	0.248m
		20% (2.405m) :	0.180m
		10% (1.202m) :	0.092m
		0% (0.000m) :	0.000m

# Mainsail: 7000626 Eduard-1 Farr30 MainsailV1.des



## Seam Allowances

Zone:	Split	Radial	Cross
Zone: 1/a	0.038m	0.016m	0.038m
Zone: 1/b	0.038m	0.016m	0.038m
Zone: 2/a	0.038m	0.016m	0.038m
Zone: 2/b	0.038m	0.016m	0.038m
Zone: 3	0.038m	0.016m	0.038m
Zone: 4	0.038m	0.016m	0.038m

## Edge Excesses

Sail:	Luff	Leech	Foot
Sail:	0.000m	0.000m	0.000m

## Total Seam Lengths (m)

Horizontal	8.76
Radial/Vertical	141.92
Bi-Radial Split	7.14

## Materials

Material	Area (m <sup>2</sup> )	Panels
Material 1	35.34	1\1, 1\2, 1\3, 1\4, 1\5 1\6, 1\7, 1\8, 1\9, 1\10 1\11, 1\12, 1\13, 1b\1, 1b\2 1b\3, 1b\4, 1b\5, 1b\6, 1b\7 1b\8, 1b\9, 1b\10, 1b\11, 1b\12 1b\13, 2\1, 2\2, 2\3, 2\4 2\5, 2\6, 2b\1, 2b\2, 2b\3 2b\4, 2b\5, 2b\6, 3\1, 3\2 3\3, 3\4, 3\5, 3\6, 3\7 3\8, 4\1, 4\2, 4\3, 4\4 4\5, 4\6