

Genoa: 7000615 Craig-3 100% JibV1.des

Design Info
=====

Design File:
\\NAS\Engineering files\Queenie-Customer Order\Fareast Sails\2023 Order\Need Confrim Order\7000615 Craig\70006

Initial Design Date: 25/6/2023
Boat:

Comments:

Client:

Design Data
=====

Genoa

Measurements

Luff geodesic:	9.157m
Leech geodesic:	8.113m
Foot geodesic:	3.405m
Headboard width:	0.050m
Luff perpendicular (HLP):	3.000m
Upper width (HUW):	0.344m
Three-quarter width (HTW):	0.657m
Half width (HHW):	1.356m
Quarter width (HQW):	2.146m
Foot median:	8.559m
ORC Headsail area:	13.076m?
IRC Headsail area:	13.044m?
Surface area:	13.154m?
Forestay height:	9.000m
J:	3.000m

Draft Stripes

1, Luff: 3.036m ; Leech: 2.270m ;
2, Luff: 6.067m ; Leech: 5.135m ;

Luff Slides

1, Position: 0.500m
2, Position: 1.196m
3, Position: 1.893m
4, Position: 2.589m
5, Position: 3.286m
6, Position: 3.982m
7, Position: 4.679m
8, Position: 5.375m
9, Position: 6.071m
10, Position: 6.768m
11, Position: 7.464m
12, Position: 8.161m
13, Position: 8.857m

Luff Curve

9.155m,	0.000m
8.394m,	0.031m
7.553m,	0.056m
6.812m,	0.068m
5.951m,	0.073m
4.556m,	0.064m
2.975m,	0.044m
1.547m,	0.022m
0.000m,	0.000m

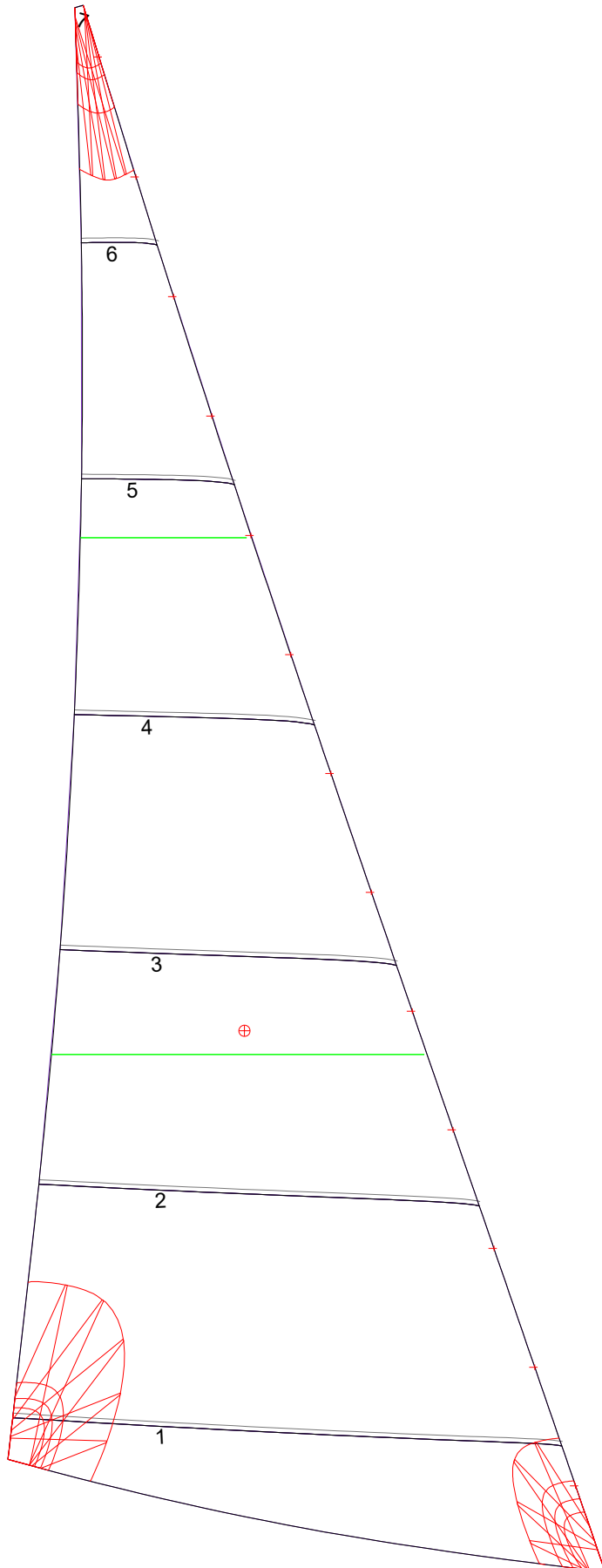
Fanned Luff (@ 5.00% [0.166m])

100% (9.155m) :	0.000m
90% (8.240m) :	-0.035m
80% (7.325m) :	-0.060m
70% (6.409m) :	-0.073m
60% (5.494m) :	-0.074m
50% (4.578m) :	-0.068m
40% (3.662m) :	-0.057m
30% (2.747m) :	-0.043m
20% (1.831m) :	-0.028m
10% (0.915m) :	-0.014m
0% (0.000m) :	0.000m

Before BSeam

0.000m
-0.014m
-0.022m
-0.023m
-0.019m
-0.012m
-0.004m
0.001m
0.004m
0.005m
0.000m

Genoa: 7000615 Craig-3 100% JibV1.des



Seam Allowances			
	Split	Radial	Cross
Zone: 1	0.025m	0.025m	0.025m

Edge Excesses			
Sail:	Luff	Leech	Foot
	0.000m	0.000m	0.000m

Total Seam Lengths (m)

Horizontal	10.33
Radial/Vertical	0.00
Bi-Radial Split	0.00

Materials

Material	Area (m ²)	Panels
Material 1	13.20	1,2,3,4,5 6,7