

Genoa: 7000615 Craig-3 100% Jib.des

Design Info
=====

Design File:
\\NAS\Engineering files\Queenie-Customer Order\Fareast Sails\2023 Order\Need Confrim Order\7000615 Craig\70006

Initial Design Date: 25/6/2023
Boat:

Comments:

Client:

Design Data
=====

Genoa

Measurements

Luff geodesic:	9.078m
Leech geodesic:	8.040m
Foot geodesic:	3.405m
Headboard width:	0.030m
Luff perpendicular (HLP):	3.000m
Upper width (HUW):	0.327m
Three-quarter width (HTW):	0.643m
Half width (HHW):	1.347m
Quarter width (HQW):	2.141m
Foot median:	8.481m
ORC Headsail area:	12.887m?
IRC Headsail area:	12.859m?
Surface area:	12.963m?
Forestay height:	9.000m
J:	3.000m

Draft Stripes

1, Luff: 3.010m ; Leech: 2.247m ;
2, Luff: 6.015m ; Leech: 5.088m ;

Luff Curve

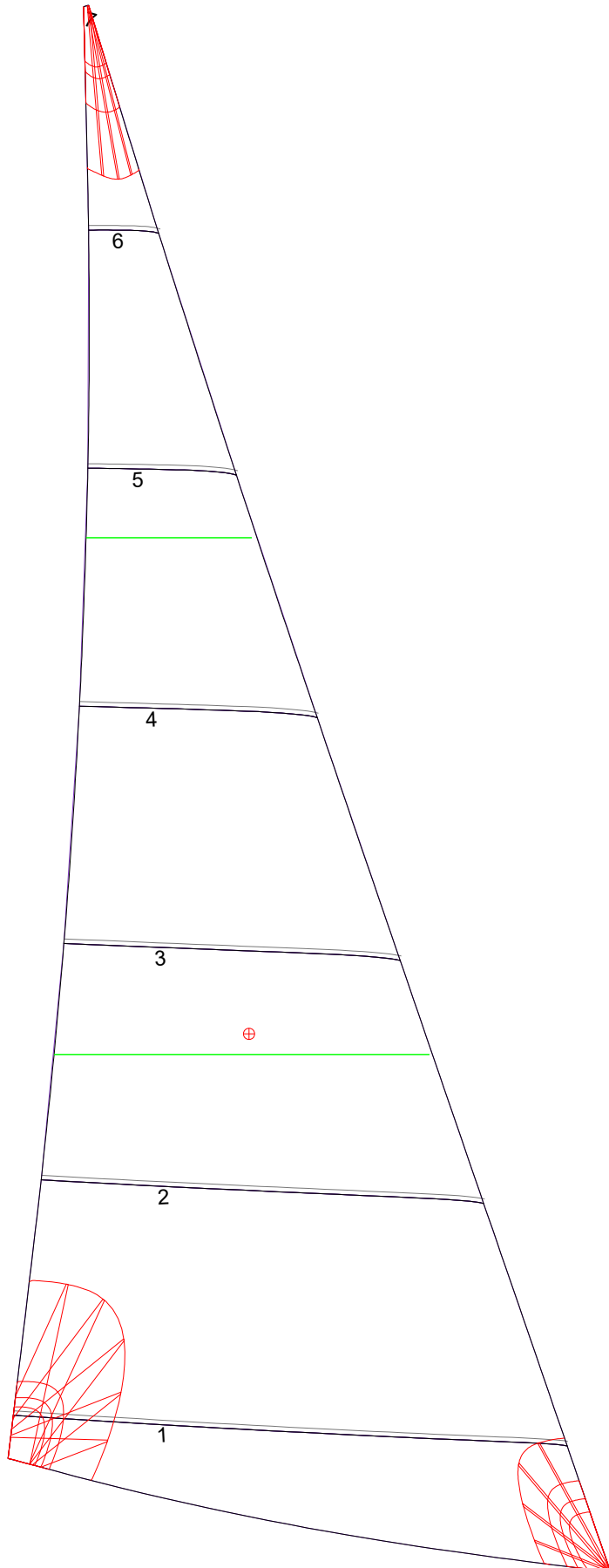
9.076m,	0.000m
8.322m,	0.031m
7.488m,	0.056m
6.754m,	0.068m
5.900m,	0.073m
4.517m,	0.064m
2.950m,	0.044m
1.534m,	0.022m
0.000m,	0.000m

Fanned Luff (@ 5.00% [0.166m])

100% (9.076m) :	-0.000m	-0.000m
90% (8.169m) :	-0.035m	-0.015m
80% (7.262m) :	-0.060m	-0.022m
70% (6.354m) :	-0.072m	-0.023m
60% (5.446m) :	-0.073m	-0.019m
50% (4.538m) :	-0.066m	-0.012m
40% (3.631m) :	-0.055m	-0.004m
30% (2.723m) :	-0.041m	0.001m
20% (1.816m) :	-0.027m	0.004m
10% (0.907m) :	-0.013m	0.005m
0% (0.000m) :	0.000m	0.000m

Before BSeam

Genoa: 7000615 Craig-3 100% Jib.des



Seam Allowances			
Zone: 1	Split	Radial	Cross
	0.025m	0.025m	0.025m

Edge Excesses			
Sail:	Luff	Leech	Foot
	0.000m	0.000m	0.000m

Total Seam Lengths (m)

Horizontal	10.20
Radial/Vertical	0.00
Bi-Radial Split	0.00

Materials

Material	Area (m ²)	Panels
Material 1	13.01	1,2,3,4,5 6,7