

Mainsail: 7000612 Miodrag-2 Albin 5.7 Mainsail.des

Design Info
=====

Design File:
\\NAS\Engineering files\Queenie-Customer Order\Fareast Sails\2023 Order\Need to be Confirmed\7000612 Miodrag\7000612 Miodrag-2 Albin 5.7 Mainsail.des

Initial Design Date: 14/9/2023
Boat:

Comments:

Client:

Design Data
=====

Main

Measurements

Luff geodesic: 6.484m
 Leech geodesic: 6.827m
 Foot geodesic: 2.376m
 Head geodesic: 0.105m
 Upper width (MUW): 0.489m
 Three-quarter width (MTW): 0.881m
 Half width (MHW): 1.516m
 Quarter width (MQW): 2.002m
 Foot median: 6.651m
 ORC Mainsail area: 9.137m?
 Surface area: 9.434m?
 Clew height: 0.100m
 Mast rake: 0.000m

Battens

Position	Length	Roach	Angle	Luff	Leech	Full
80.000%	0.783m	0.170m	70.592?	5.198m	5.445m	Full
60.000%	1.325m	0.221m	70.592?	3.914m	4.084m	Full
40.000%	0.743m	0.195m	70.592?	2.630m	2.723m	
20.000%	0.619m	0.112m	70.592?	1.346m	1.361m	

Reefing Points

1, Luff: 0.810m ; Leech: 0.839m ; Offset: 0.000m ; Number Eyelets: 2
 2, Luff: 1.653m ; Leech: 1.708m ; Offset: 0.000m ; Number Eyelets: 2

Draft Stripes

1, Luff: 2.139m ; Leech: 2.162m ;
 2, Luff: 4.279m ; Leech: 4.413m ;

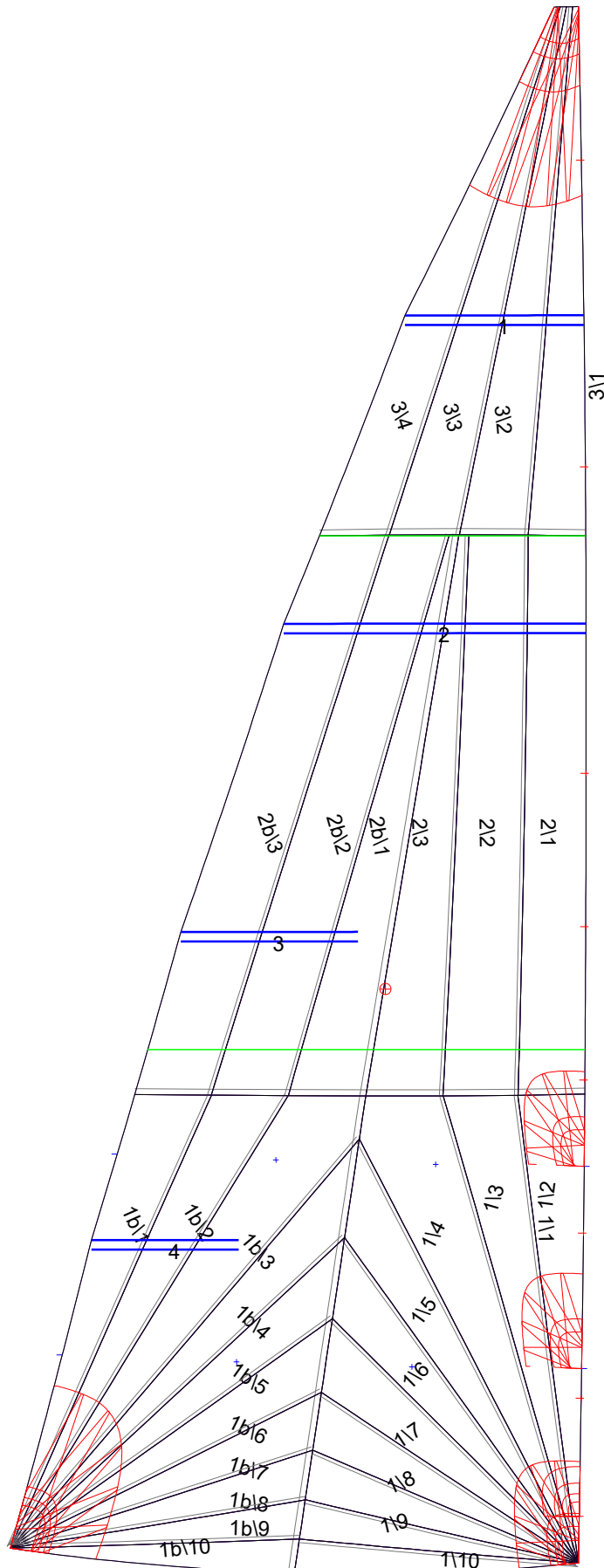
Luff Slides

1, Position: 0.687m
 2, Position: 1.374m
 3, Position: 2.013m
 4, Position: 2.651m
 5, Position: 3.290m
 6, Position: 4.567m
 7, Position: 5.845m

Luff Curve

		Fanned Luff (@ 5.00% [0.118m])	Before BSeam
6.484m,	0.000m	100% (6.484m) :	0.000m
5.676m,	-0.015m	90% (5.836m) :	0.008m
4.863m,	-0.026m	80% (5.187m) :	0.016m
4.048m,	-0.031m	70% (4.539m) :	0.020m
3.242m,	-0.032m	60% (3.890m) :	0.022m
2.416m,	-0.029m	50% (3.242m) :	0.021m
1.621m,	-0.023m	40% (2.594m) :	0.020m
0.808m,	-0.013m	30% (1.945m) :	0.016m
0.000m,	0.000m	20% (1.297m) :	0.011m
		10% (0.648m) :	0.005m
		0% (0.000m) :	0.000m

Mainsail: 7000612 Miodrag-2 Albin 5.7 Mainsail.des



Seam Allowances

Zone:	Split	Radial	Cross
Zone: 1/a	0.025m	0.015m	0.025m
Zone: 1/b	0.025m	0.015m	0.025m
Zone: 2/a	0.025m	0.015m	0.025m
Zone: 2/b	0.025m	0.015m	0.025m
Zone: 3	0.025m	0.015m	0.025m

Edge Excesses

Sail:	Luff	Leech	Foot
Sail:	0.000m	0.000m	0.000m

Total Seam Lengths (m)

Horizontal	3.11
Radial/Vertical	45.95
Bi-Radial Split	4.57

Materials

Material	Area (m ²)	Panels
Material 1	9.44	1i1,1i2,1i3,1i4,1i5 1i6,1i7,1i8,1i9,1i10 1b1,1b2,1b3,1b4,1b5 1b6,1b7,1b8,1b9,1b10 2i1,2i2,2i3,2b1,2b2 2b3,3i1,3i2,3i3,3i4