

# Mainsail: 7000603 Yoh-1 Yamaha 34S Mainsail.des

Design Info  
=====

Design File:  
\\NAS\Engineering files\Queenie-Customer Order\Fareast Sails\2023 Order\Need Confrim Order\7000603 Yoh\7000603

Initial Design Date: 8/6/2023  
Boat:

Comments:

Client:

Design Data  
=====

## Main

### Measurements

Luff geodesic:	12.520m
Leech geodesic:	13.227m
Foot geodesic:	4.554m
Head geodesic:	0.115m
Upper width (MUW):	0.842m
Three-quarter width (MTW):	1.547m
Half width (MHW):	2.767m
Quarter width (MQW):	3.739m
Foot median:	12.848m
ORC Mainsail area:	32.528m?
Surface area:	33.315m?
Clew height:	0.100m
Mast rake:	0.000m

### Battens

Position	Length	Roach	Angle	Luff	Leech	Full
82.000%	1.219m	0.213m	70.401?	10.282m	10.809m	Full
62.000%	2.265m	0.287m	70.401?	7.799m	8.173m	Full
41.500%	3.165m	0.265m	70.401?	5.253m	5.470m	Full
21.000%	3.894m	0.153m	70.401?	2.707m	2.768m	Full

### Reefing Points

1, Luff: 1.878m ; Leech: 1.961m ; Offset: 0.000m ; Number Eyelets: 3  
 2, Luff: 3.756m ; Leech: 3.919m ; Offset: 0.000m ; Number Eyelets: 3

### Draft Stripes

1, Luff: 3.130m ; Leech: 3.180m ;  
 2, Luff: 6.260m ; Leech: 6.477m ;  
 3, Luff: 9.390m ; Leech: 9.805m ;

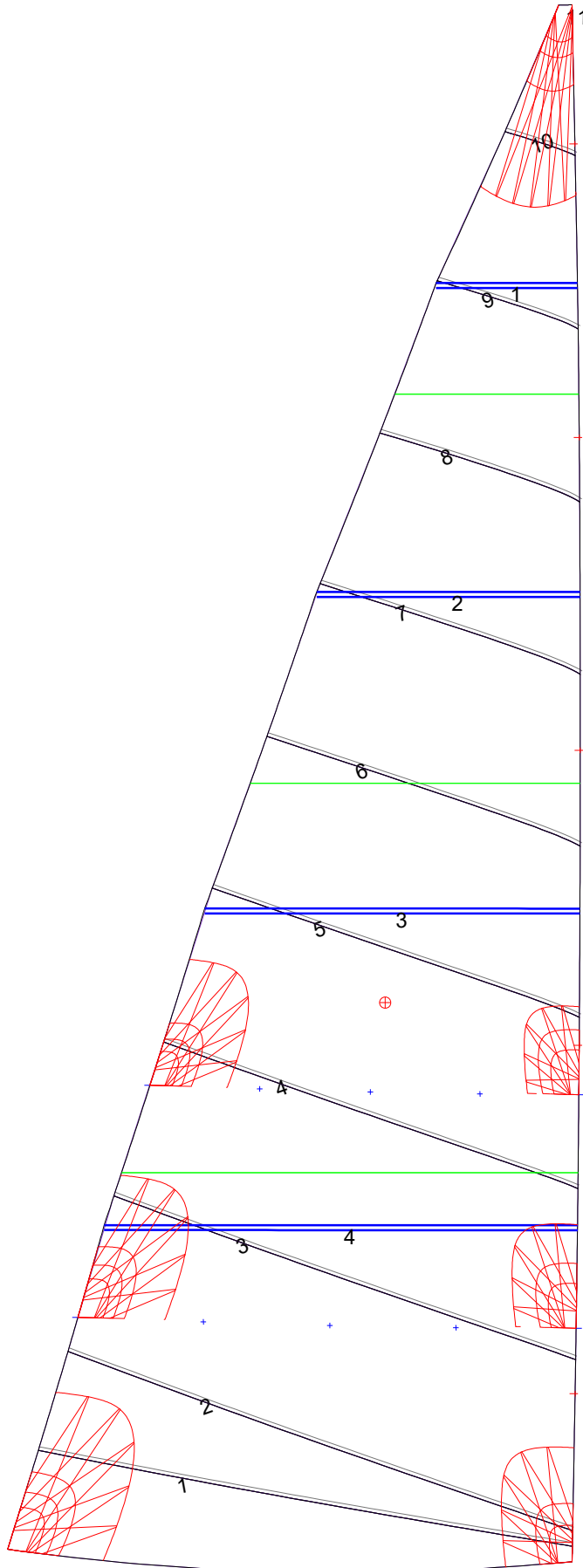
### Luff Slides

1, Position: 1.353m  
 2, Position: 4.153m  
 3, Position: 6.526m  
 4, Position: 9.040m  
 5, Position: 11.401m

### Luff Curve

		Fanned Luff (@ 5.00% [0.227m])	Before BSeam
12.519m,	0.000m	100% (12.520m) :	0.000m
10.959m,	-0.032m	90% (11.268m) :	0.051m
9.390m,	-0.055m	80% (10.016m) :	0.099m
7.816m,	-0.065m	70% (8.764m) :	0.137m
6.260m,	-0.066m	60% (7.512m) :	0.158m
4.665m,	-0.061m	50% (6.260m) :	0.161m
3.130m,	-0.049m	40% (5.008m) :	0.148m
1.560m,	-0.028m	30% (3.756m) :	0.121m
0.000m,	0.000m	20% (2.504m) :	0.084m
		10% (1.252m) :	0.041m
		0% (0.000m) :	0.000m

# Mainsail: 7000603 Yoh-1 Yamaha 34S Mainsail.des



Seam Allowances			
Zone:	Split	Radial	Cross
1	0.030m	0.030m	0.030m

Edge Excesses			
Sail:	Luff	Leech	Foot
	0.000m	0.000m	0.000m

## Total Seam Lengths (m)

Horizontal	28.52
Radial/Vertical	0.00
Bi-Radial Split	0.00

## Materials

Material	Area (m <sup>2</sup> )	Panels
Material 1	33.37	1,2,3,4,5 6,7,8,9,10 11