

# Genoa: 7000601 Matthieu Mirage33 HeadsailV1.des

Design Info  
=====

Design File:  
\\NAS\Engineering files\Queenie-Customer Order\Fareast Sails\2023 Order\Need Confrim Order\7000601 Matthieu\70

Initial Design Date: 15/6/2023  
Boat:

Comments:

Client:

Design Data  
=====

Genoa

## Measurements

Luff geodesic:	11.660m
Leech geodesic:	10.964m
Foot geodesic:	4.747m
Headboard width:	0.030m
Luff perpendicular (HLP):	4.474m
Upper width (HUW):	0.497m
Three-quarter width (HTW):	0.987m
Half width (HHW):	2.059m
Quarter width (HQW):	3.236m
Foot median:	11.210m
ORC Headsail area:	24.987m?
IRC Headsail area:	24.927m?
Surface area:	25.143m?
Forestay height:	13.110m
J:	3.890m

## Draft Stripes

1, Luff: 3.864m ; Leech: 3.404m ;  
2, Luff: 7.723m ; Leech: 7.114m ;

## Luff Curve

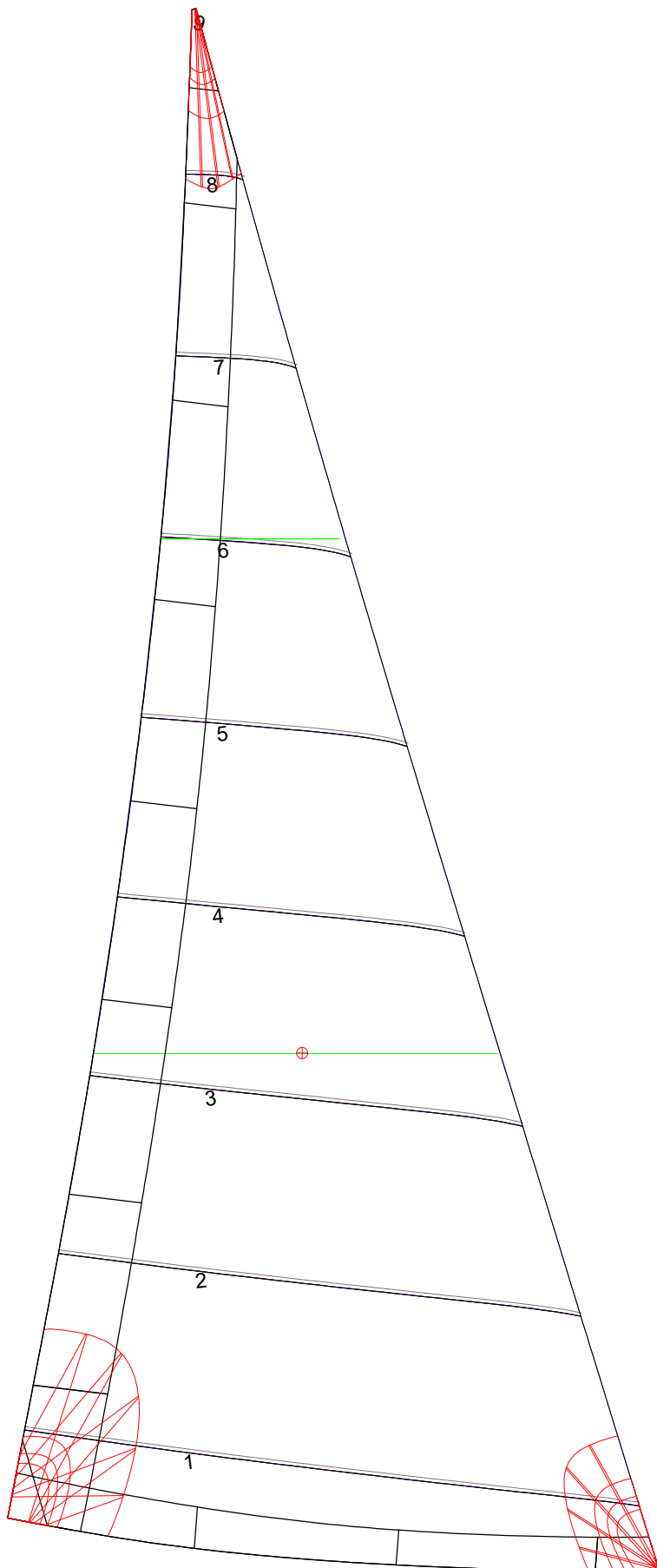
11.658m,	0.000m
10.689m,	0.040m
9.618m,	0.071m
8.674m,	0.088m
7.578m,	0.094m
5.801m,	0.083m
3.789m,	0.056m
1.970m,	0.028m
0.000m,	0.000m

## Fanned Luff (@ 5.00% [0.233m])

100% (11.658m) :	-0.000m	-0.000m
90% (10.492m) :	-0.044m	-0.004m
80% (9.328m) :	-0.076m	-0.001m
70% (8.161m) :	-0.092m	0.005m
60% (6.995m) :	-0.095m	0.013m
50% (5.829m) :	-0.087m	0.021m
40% (4.663m) :	-0.073m	0.027m
30% (3.497m) :	-0.056m	0.029m
20% (2.332m) :	-0.037m	0.025m
10% (1.165m) :	-0.019m	0.016m
0% (0.000m) :	0.000m	0.000m

## Before BSeam

# Genoa: 7000601 Matthieu Mirage33 HeadsailV1.des



## Seam Allowances

Zone:	Split	Radial	Cross
Zone: 1	0.026m	0.026m	0.026m
Cover 1	0.025m	0.025m	0.025m
Cover 2	0.025m	0.025m	0.025m
Cover 3	0.000m	0.000m	0.000m
Cover 4	0.000m	0.000m	0.000m

## Edge Excesses

	Luff	Leech	Foot
Sail:	0.000m	0.000m	0.000m
Cover 0	0.070m	0.100m	0.070m
Cover 1	0.070m	0.070m	0.100m
Cover 2	0.000m	0.070m	0.070m
Cover 3	0.000m	0.070m	0.070m

## Total Seam Lengths (m)

Horizontal	19.28
Radial/Vertical	0.00
Bi-Radial Split	0.00

## Materials

Material	Area (m <sup>2</sup> )	Panels
Material 1	25.19	1,2,3,4,5 6,7,8,9