

# Mainsail: 7000530 Wolfgang-1 Open 28 Mainsail.des

## Design Info

=====

## Design File:

\\NAS\Engineering files\Queenie-Customer Order\Fareast Sails\2023 Order\Need Confrim Order\7000530 Wolfgang\7000530 Wolfgang-1 Open 28 Mainsail.des

Initial Design Date: 7/6/2023

Boat:

Comments:

Client:

## Design Data

=====

### Main

#### Measurements

Luff geodesic:	8.770m
Leech geodesic:	9.176m
Foot geodesic:	2.970m
Head geodesic:	0.115m
Upper width (MUW):	0.611m
Three-quarter width (MTW):	1.103m
Half width (MHW):	1.903m
Quarter width (MQW):	2.500m
Foot median:	8.972m
ORC Mainsail area:	15.455m <sup>2</sup>
Surface area:	15.881m <sup>2</sup>
Clew height:	0.100m
Mast rake:	0.000m

#### Battens

Position	Length	Roach	Angle	Luff	Leech	Full
80.000%	0.970m	0.212m	71.357°	7.036m	7.315m	Full
60.000%	1.657m	0.275m	71.357°	5.304m	5.486m	Full
40.000%	2.196m	0.243m	71.357°	3.571m	3.657m	Full
20.000%	2.616m	0.140m	71.357°	1.838m	1.829m	Full

#### Reefing Points

1, Luff: 1.316m ; Leech: 1.355m ; Offset: 0.000m ; Number Eyelets: 0  
2, Luff: 2.631m ; Leech: 2.710m ; Offset: 0.000m ; Number Eyelets: 0

#### Draft Stripes

1, Luff: 2.894m ; Leech: 2.920m ;  
2, Luff: 5.788m ; Leech: 5.948m ;

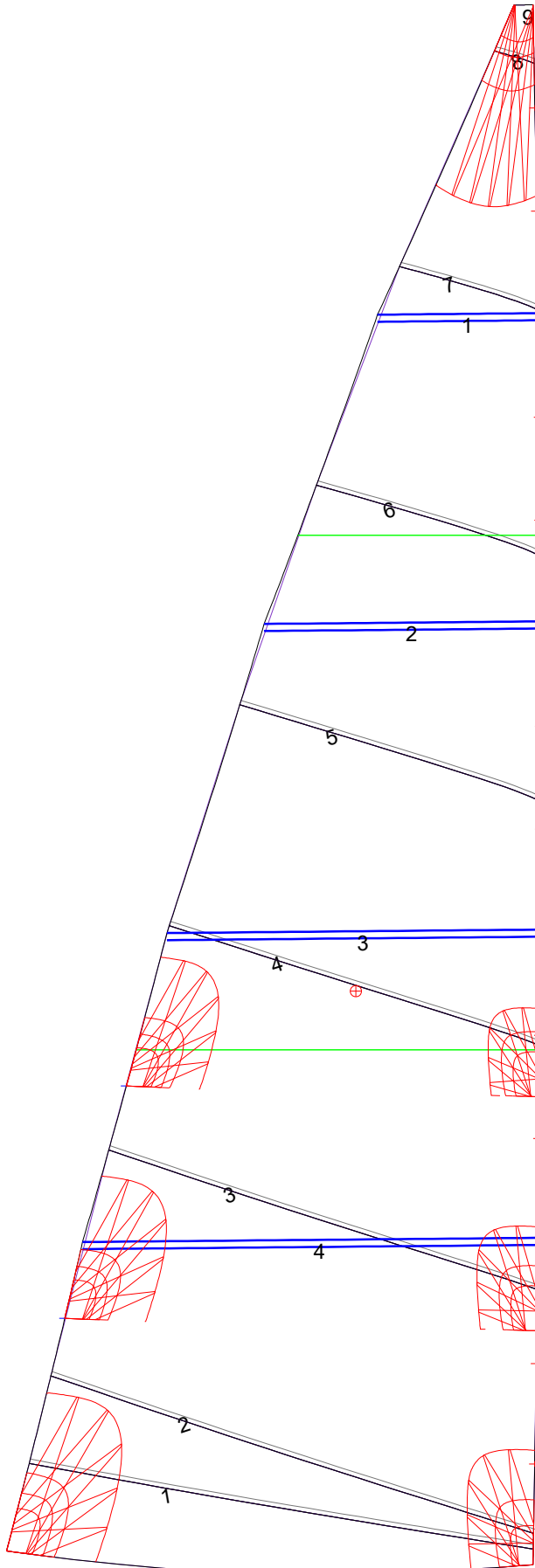
#### Luff Slides

1, Position: 0.567m  
2, Position: 1.130m  
3, Position: 2.397m  
4, Position: 2.976m  
5, Position: 4.134m  
6, Position: 4.713m  
7, Position: 5.872m  
8, Position: 6.451m  
9, Position: 7.610m  
10, Position: 8.190m

#### Luff Curve

		Fanned Luff (@ 5.00% [0.148m])	Before BSeam
8.770m,	0.000m	100% (8.770m) :	0.000m
7.677m,	-0.020m	90% (7.893m) :	0.035m
6.577m,	-0.035m	80% (7.016m) :	0.067m
5.475m,	-0.041m	70% (6.139m) :	0.092m
4.385m,	-0.042m	60% (5.262m) :	0.105m
3.268m,	-0.039m	50% (4.385m) :	0.106m
2.192m,	-0.031m	40% (3.508m) :	0.097m
1.093m,	-0.018m	30% (2.631m) :	0.079m
0.000m,	0.000m	20% (1.754m) :	0.054m
		10% (0.877m) :	0.026m
		0% (0.000m) :	0.000m

# Mainsail: 7000530 Wolfgang-1 Open 28 Mainsail.des



Seam Allowances			
Zone: 1	Split	Radial	Cross
	0.025m	0.025m	0.025m

Edge Excesses			
Sail:	Luff	Leech	Foot
	0.000m	0.000m	0.000m

## Total Seam Lengths (m)

Horizontal	15.03
Radial/Vertical	0.00
Bi-Radial Split	0.00

## Materials

Material	Area (m <sup>2</sup> )	Panels
Material 1	15.87	1,2,3,4,5 6,7,8,9