

Genoa: 7000519 Holger-1 Jib 1reef.des

Design Info
=====

Design File:
\\NAS\Engineering files\Queenie-Customer Order\Fareast Sails\2023 Order\Need Confrim Order\7000519 Holger\7000

Initial Design Date: 27/5/2023
Boat:

Comments:

Client:

Design Data
=====

Genoa

Measurements

Luff geodesic:	35.640Ft
Leech geodesic:	30.167Ft
Foot geodesic:	13.829Ft
Headboard width:	0.161Ft
Luff perpendicular (HLP):	11.498Ft
Upper width (HUW):	1.273Ft
Three-quarter width (HTW):	2.465Ft
Half width (HHW):	5.159Ft
Quarter width (HQW):	8.221Ft
Foot median:	32.593Ft
ORC Headsail area:	194.172Ft?
IRC Headsail area:	193.536Ft?
Surface area:	195.864Ft?
Forestay height:	40.000Ft
J:	13.000Ft

Reefing Points

1, Luff: 5.370Ft ; Leech: 5.919Ft ; Offset: 0.000Ft ; Number Eyelets: 0

Draft Stripes

1, Luff: 11.817Ft ; Leech: 7.349Ft ;
2, Luff: 23.613Ft ; Leech: 18.549Ft ;

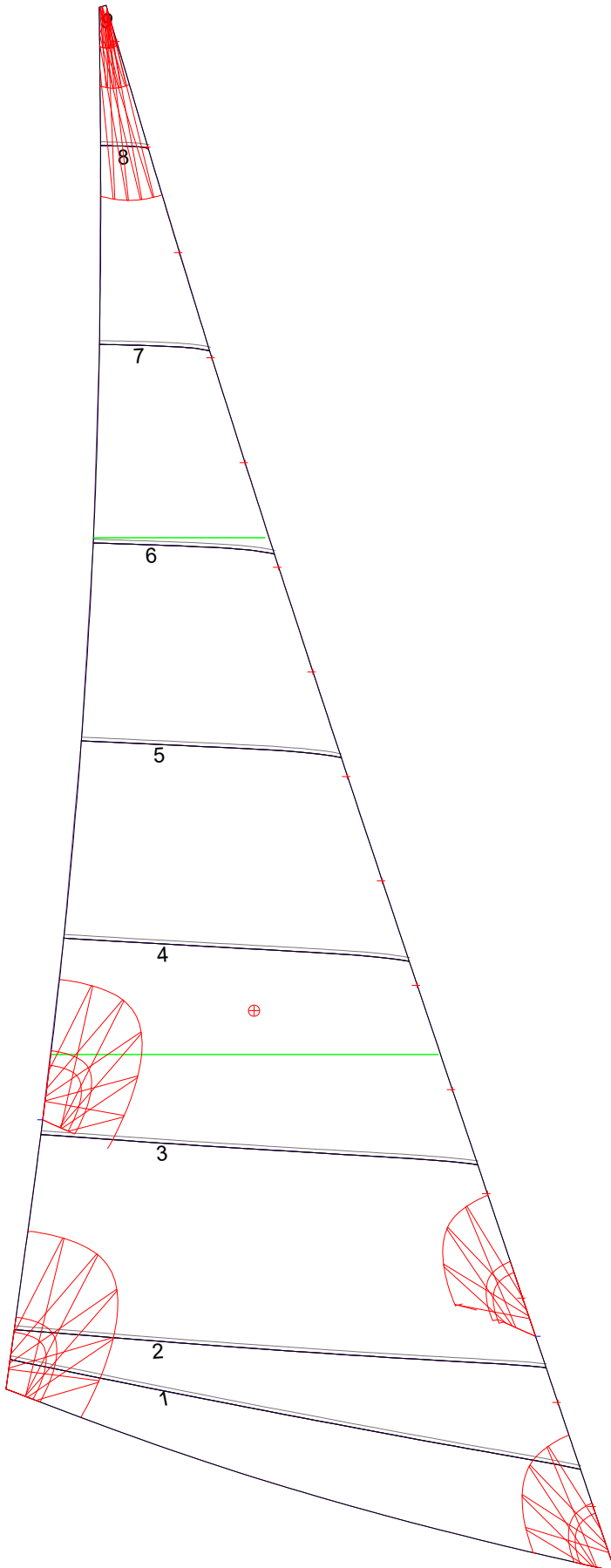
Luff Slides

1, Position: 1.476Ft
2, Position: 3.858Ft
3, Position: 6.240Ft
4, Position: 8.621Ft
5, Position: 11.003Ft
6, Position: 13.385Ft
7, Position: 15.766Ft
8, Position: 18.148Ft
9, Position: 20.530Ft
10, Position: 22.911Ft
11, Position: 25.293Ft
12, Position: 27.675Ft
13, Position: 30.056Ft
14, Position: 32.438Ft
15, Position: 34.820Ft

Luff Curve

		Fanned Luff (@ 5.00% [0.659Ft])	Before BSeam
35.632Ft,	0.000Ft	100% (35.633Ft) :	-0.000Ft
32.671Ft,	0.121Ft	90% (32.070Ft) :	-0.070Ft
29.397Ft,	0.219Ft	80% (28.511Ft) :	-0.106Ft
26.514Ft,	0.269Ft	70% (24.945Ft) :	-0.104Ft
23.162Ft,	0.288Ft	60% (21.382Ft) :	-0.077Ft
17.732Ft,	0.253Ft	50% (17.818Ft) :	-0.037Ft
11.581Ft,	0.172Ft	40% (14.254Ft) :	0.001Ft
6.023Ft,	0.086Ft	30% (10.690Ft) :	0.027Ft
0.000Ft,	0.000Ft	20% (7.128Ft) :	0.035Ft
		10% (3.561Ft) :	0.022Ft
		0% (0.000Ft) :	0.000Ft

Genoa: 7000519 Holger-1 Jib 1reef.des



Seam Allowances			
Zone: 1	Split	Radial	Cross
	0.082Ft	0.082Ft	0.082Ft

Edge Excesses			
Sail:	Luff	Leech	Foot
	0.000Ft	0.000Ft	0.000Ft

Total Seam Lengths (Ft)

Horizontal	55.68
Radial/Vertical	0.00
Bi-Radial Split	0.00

Materials

Material	Area (Ft ²)	Panels
Material 1	196.53	1,2,3,4,5 6,7,8,9