

Mainsail: 7000517 Ed Mainsail.des

Design Info
=====

Design File:
\\NAS\Engineering files\Queenie-Customer Order\Fareast Sails\2023 Order\Need Confrim Order\7000517 Ed\7000517

Initial Design Date: 7/6/2023
Boat:

Comments:

Client:

Design Data
=====

Main

Measurements

Luff geodesic:	8.860m
Leech geodesic:	9.297m
Foot geodesic:	3.088m
Head geodesic:	0.115m
Upper width (MUW):	0.625m
Three-quarter width (MTW):	1.133m
Half width (MHW):	1.964m
Quarter width (MQW):	2.590m
Foot median:	9.070m
ORC Mainsail area:	16.143m?
Surface area:	16.589m?
Clew height:	0.100m
Mast rake:	0.000m

Battens

Position	Length	Roach	Angle	Luff	Leech	Full
80.000%	0.994m	0.212m	71.357?	7.102m	7.410m	Full
60.000%	1.707m	0.275m	71.357?	5.347m	5.558m	Full
40.000%	2.269m	0.243m	71.357?	3.591m	3.705m	Full
20.000%	2.711m	0.140m	71.357?	1.836m	1.853m	Full

Reefing Points

1, Luff: 1.329m ; Leech: 1.372m ; Offset: 0.000m ; Number Eyelets: 2
2, Luff: 2.658m ; Leech: 2.745m ; Offset: 0.000m ; Number Eyelets: 2

Draft Stripes

1, Luff: 2.924m ; Leech: 2.956m ;
2, Luff: 5.848m ; Leech: 6.024m ;

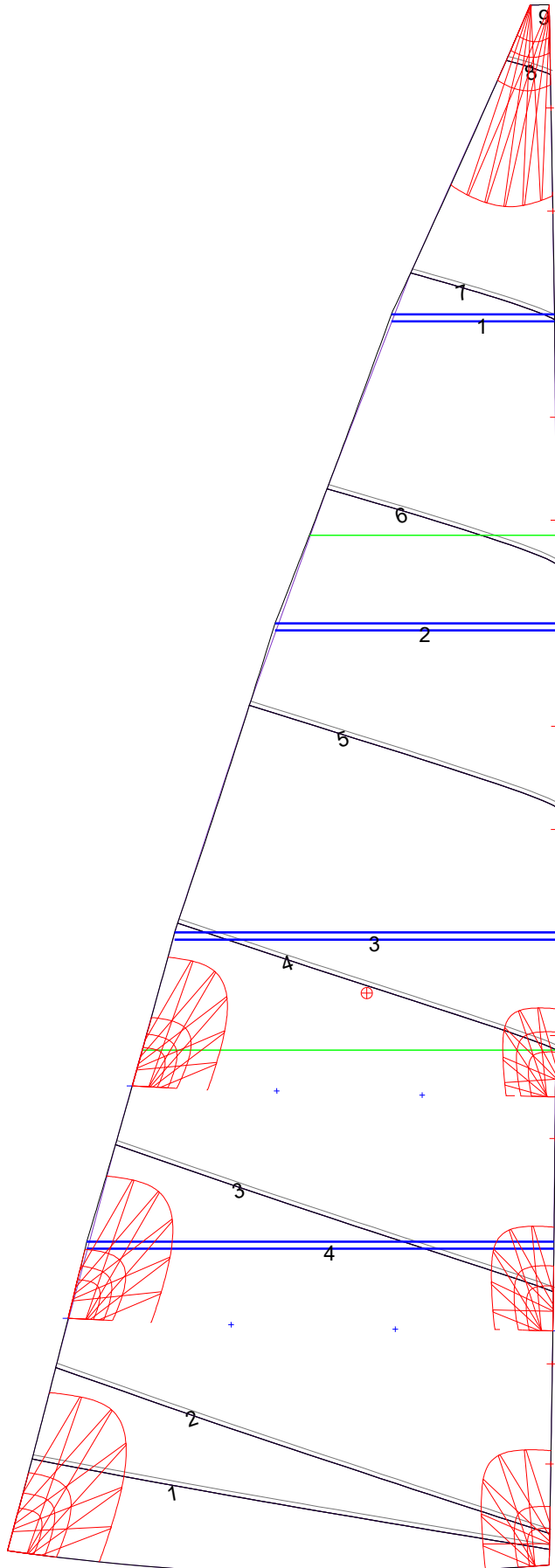
Luff Slides

1, Position: 0.573m
2, Position: 1.142m
3, Position: 2.421m
4, Position: 3.006m
5, Position: 4.177m
6, Position: 4.762m
7, Position: 5.932m
8, Position: 6.517m
9, Position: 7.688m
10, Position: 8.274m

Luff Curve

		Fanned Luff (@ 5.00% [0.154m])	Before BSeam
8.860m,	0.000m	100% (8.860m) :	0.000m
7.756m,	-0.020m	90% (7.974m) :	0.035m
6.645m,	-0.035m	80% (7.088m) :	0.068m
5.531m,	-0.041m	70% (6.202m) :	0.094m
4.430m,	-0.042m	60% (5.316m) :	0.107m
3.301m,	-0.039m	50% (4.430m) :	0.109m
2.215m,	-0.031m	40% (3.544m) :	0.099m
1.104m,	-0.018m	30% (2.658m) :	0.080m
0.000m,	0.000m	20% (1.772m) :	0.055m
		10% (0.886m) :	0.027m
		0% (0.000m) :	0.000m

Mainsail: 7000517 Ed Mainsail.des



Seam Allowances			
Zone:	Split	Radial	Cross
1	0.025m	0.025m	0.025m

Edge Excesses			
Sail:	Luff	Leech	Foot
	0.000m	0.000m	0.000m

Total Seam Lengths (m)

Horizontal	15.61
Radial/Vertical	0.00
Bi-Radial Split	0.00

Materials

Material	Area (m ²)	Panels
Material 1	16.58	1,2,3,4,5 6,7,8,9