

# Genoa: 7000516 Akihiro Headsail.des

Design Info  
=====

Design File:  
\\NAS\Engineering files\Queenie-Customer Order\Fareast Sails\2023 Order\Need Confrim Order\7000516 Akihiro\7000

Initial Design Date: 27/5/2023  
Boat:

Comments:

Client:

Design Data  
=====

Genoa

## Measurements

Luff geodesic:	8.650m
Leech geodesic:	8.150m
Foot geodesic:	3.390m
Headboard width:	0.030m
Luff perpendicular (HLP):	3.201m
Upper width (HUW):	0.358m
Three-quarter width (HTW):	0.702m
Half width (HHW):	1.464m
Quarter width (HQW):	2.308m
Foot median:	8.333m
ORC Headsail area:	13.232m?
IRC Headsail area:	13.198m?
Surface area:	13.303m?
Forestay height:	8.240m
J:	2.750m

## Draft Stripes

1, Luff: 2.868m ; Leech: 2.623m ;  
2, Luff: 5.732m ; Leech: 5.331m ;

## Luff Curve

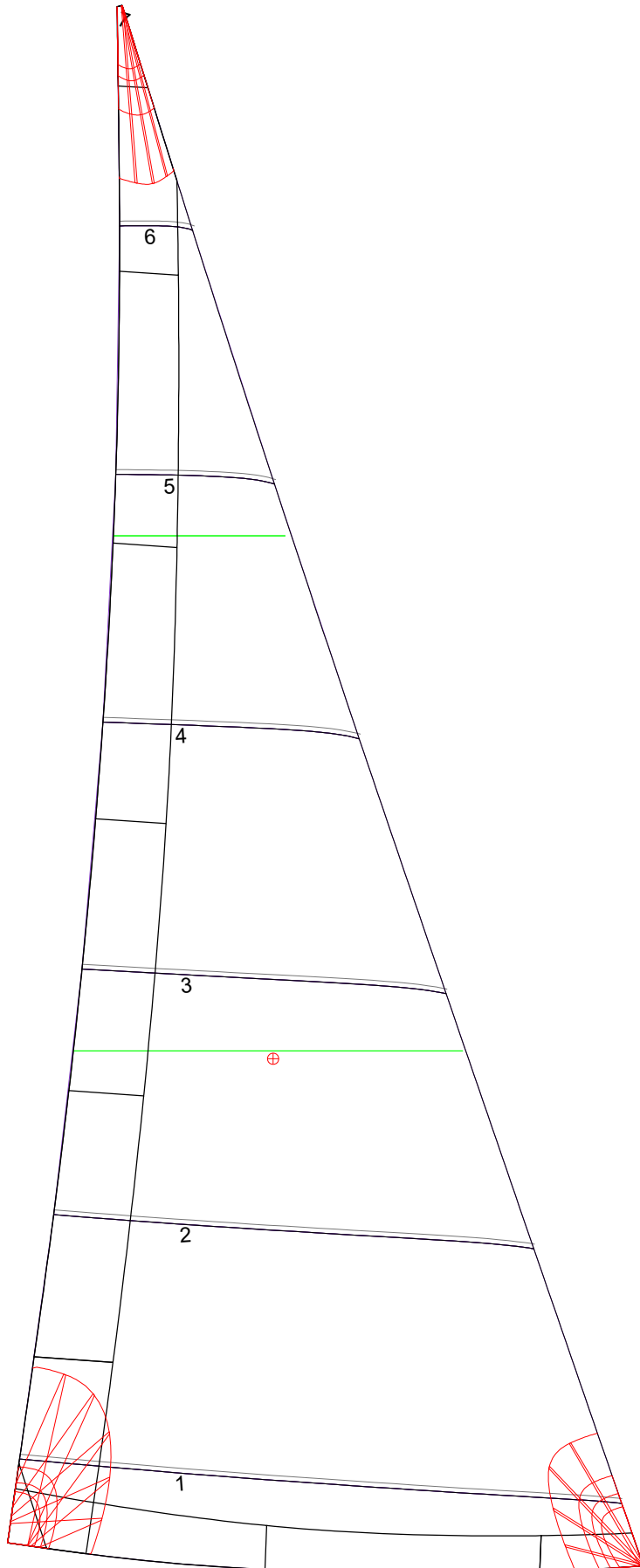
8.648m,	0.000m
7.930m,	0.029m
7.135m,	0.053m
6.435m,	0.065m
5.622m,	0.070m
4.304m,	0.061m
2.811m,	0.042m
1.462m,	0.021m
0.000m,	0.000m

## Fanned Luff (@ 5.00% [0.167m])

100% (8.648m) :	0.000m	0.000m
90% (7.783m) :	-0.032m	-0.004m
80% (6.920m) :	-0.056m	-0.003m
70% (6.054m) :	-0.068m	0.000m
60% (5.190m) :	-0.070m	0.006m
50% (4.324m) :	-0.064m	0.012m
40% (3.460m) :	-0.053m	0.017m
30% (2.595m) :	-0.041m	0.019m
20% (1.730m) :	-0.027m	0.017m
10% (0.864m) :	-0.014m	0.011m
0% (0.000m) :	0.000m	0.000m

## Before BSeam

# Genoa: 7000516 Akihiro Headsail.des



## Seam Allowances

Zone:	Split	Radial	Cross
Zone: 1	0.025m	0.025m	0.025m
Cover 1	0.025m	0.025m	0.025m
Cover 2	0.025m	0.025m	0.025m
Cover 3	0.000m	0.000m	0.000m
Cover 4	0.000m	0.000m	0.000m

## Edge Excesses

	Luff	Leech	Foot
Sail:	0.000m	0.000m	0.000m
Cover 0	0.070m	0.100m	0.070m
Cover 1	0.070m	0.070m	0.100m
Cover 2	0.000m	0.070m	0.070m
Cover 3	0.000m	0.070m	0.070m

## Total Seam Lengths (m)

Horizontal	10.66
Radial/Vertical	0.00
Bi-Radial Split	0.00

## Materials

Material	Area (m <sup>2</sup> )	Panels
Material 1	13.34	1,2,3,4,5 6,7