

# Genoa: 7000419 William-2 F27 headsail.des

Design Info  
=====

Design File:  
\\NAS\Engineering files\Queenie-Customer Order\Fareast Sails\2023 Order\Need Confrim Order\7000419 William\700

Initial Design Date: 27/4/2023  
Boat:

Comments:

Client:

Design Data  
=====

## Genoa

### Measurements

Luff geodesic:	33.750Ft
Leech geodesic:	30.166Ft
Foot geodesic:	11.583Ft
Headboard width:	0.160Ft
Luff perpendicular (HLP):	10.261Ft
Upper width (HUW):	1.131Ft
Three-quarter width (HTW):	2.172Ft
Half width (HHW):	4.543Ft
Quarter width (HQW):	7.273Ft
Foot median:	31.739Ft
ORC Headsail area:	163.010Ft?
IRC Headsail area:	162.590Ft?
Surface area:	163.679Ft?
Forestay height:	38.810Ft
J:	9.100Ft

### Draft Stripes

1, Luff: 16.930Ft ; Leech: 13.630Ft ;

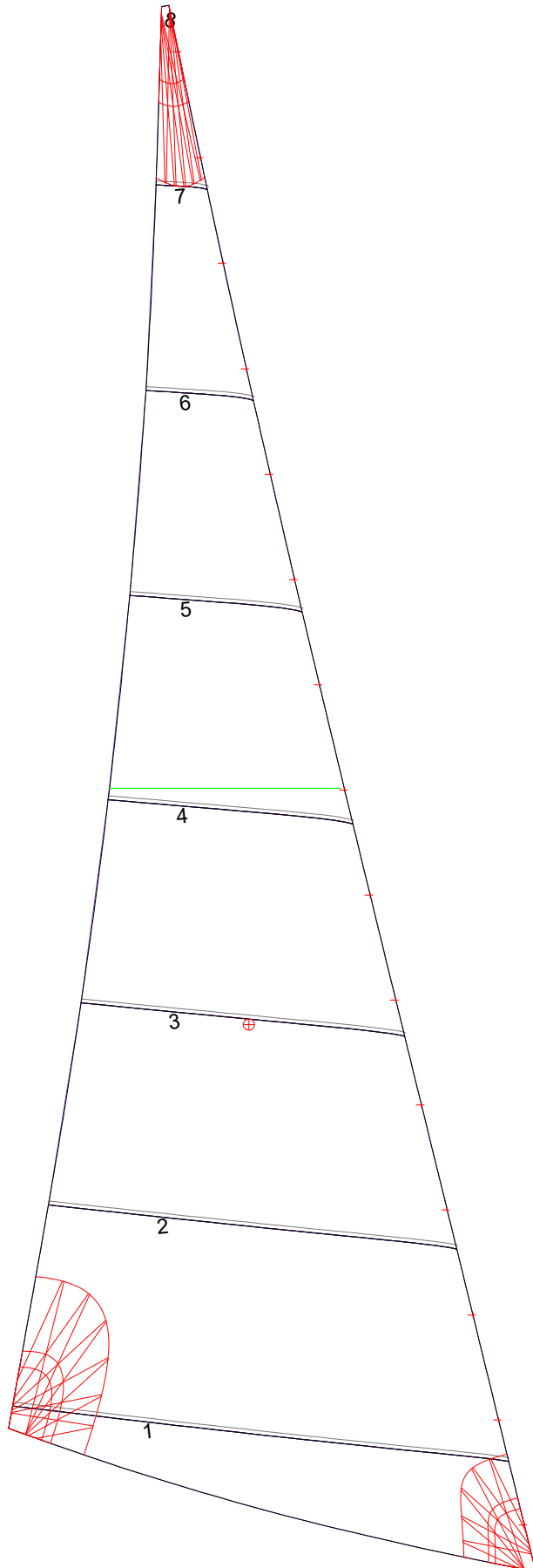
### Luff Slides

- 1, Position: 1.000Ft
- 2, Position: 3.268Ft
- 3, Position: 5.536Ft
- 4, Position: 7.804Ft
- 5, Position: 10.071Ft
- 6, Position: 12.339Ft
- 7, Position: 14.607Ft
- 8, Position: 16.875Ft
- 9, Position: 19.143Ft
- 10, Position: 21.411Ft
- 11, Position: 23.679Ft
- 12, Position: 25.946Ft
- 13, Position: 28.214Ft
- 14, Position: 30.482Ft
- 15, Position: 32.750Ft

### Luff Curve

		Fanned Luff (@ 5.00% [0.553Ft])	Before BSeam
33.743Ft,	0.000Ft	100% (33.744Ft) :	-0.000Ft
30.939Ft,	0.114Ft	90% (30.373Ft) :	-0.130Ft
27.838Ft,	0.207Ft	80% (26.997Ft) :	-0.222Ft
25.108Ft,	0.255Ft	70% (23.623Ft) :	-0.267Ft
21.934Ft,	0.273Ft	60% (20.248Ft) :	-0.272Ft
16.792Ft,	0.239Ft	50% (16.873Ft) :	-0.248Ft
10.967Ft,	0.163Ft	40% (13.498Ft) :	-0.206Ft
5.704Ft,	0.081Ft	30% (10.124Ft) :	-0.157Ft
0.000Ft,	0.000Ft	20% (6.750Ft) :	-0.104Ft
		10% (3.374Ft) :	-0.051Ft
		0% (0.000Ft) :	0.000Ft

# Genoa: 7000419 William-2 F27 headsail.des



Seam Allowances			
Zone: 1	Split	Radial	Cross
	0.082Ft	0.082Ft	0.082Ft

Edge Excesses			
Sail:	Luff	Leech	Foot
	0.000Ft	0.000Ft	0.000Ft

### Total Seam Lengths (Ft)

Horizontal	39.45
Radial/Vertical	0.00
Bi-Radial Split	0.00

### Materials

Material	Area (Ft <sup>2</sup> )	Panels
Material 1	164.27	1,2,3,4,5 6,7,8