

Mainsail: 7000419 William-1 F27 square top mainV1.des

Design Info
=====

Design File:
\\NAS\Engineering files\Queenie-Customer Order\Fareast Sails\2023 Order\Need Confrim Order\7000419 William\700

Initial Design Date: 27/4/2023
Boat:

Comments:

Client:

Design Data
=====

Main

Measurements

Luff geodesic:	33.330Ft
Leech geodesic:	35.000Ft
Foot geodesic:	12.799Ft
Head geodesic:	2.582Ft
Upper width (MUW):	4.439Ft
Three-quarter width (MTW):	7.177Ft
Half width (MHW):	10.162Ft
Quarter width (MQW):	11.761Ft
Foot median:	33.700Ft
ORC Mainsail area:	304.726Ft?
Surface area:	319.804Ft?
Clew height:	0.560Ft
Mast rake:	0.984Ft

Battens

Position	Length	Roach	Angle	Luff	Leech	Full
100.000%	3.591Ft	0.000Ft	114.433?	30.878Ft	34.804Ft	Full
89.589%	5.628Ft	1.609Ft	86.540?	28.958Ft	31.180Ft	Full
76.925%	7.860Ft	2.365Ft	79.500?	25.181Ft	26.773Ft	Full
62.232%	9.464Ft	2.387Ft	76.542?	20.594Ft	21.659Ft	Full
46.839%	10.731Ft	2.104Ft	76.542?	15.510Ft	16.302Ft	Full
31.349%	11.586Ft	1.499Ft	76.542?	10.397Ft	10.911Ft	Full
15.761%	12.170Ft	0.715Ft	76.542?	5.251Ft	5.485Ft	Full

Reefing Points

- 1, Luff: 5.800Ft ; Leech: 5.834Ft ; Offset: 0.000Ft ; Number Eyelets: 3
- 2, Luff: 13.000Ft ; Leech: 13.067Ft ; Offset: 0.000Ft ; Number Eyelets: 3

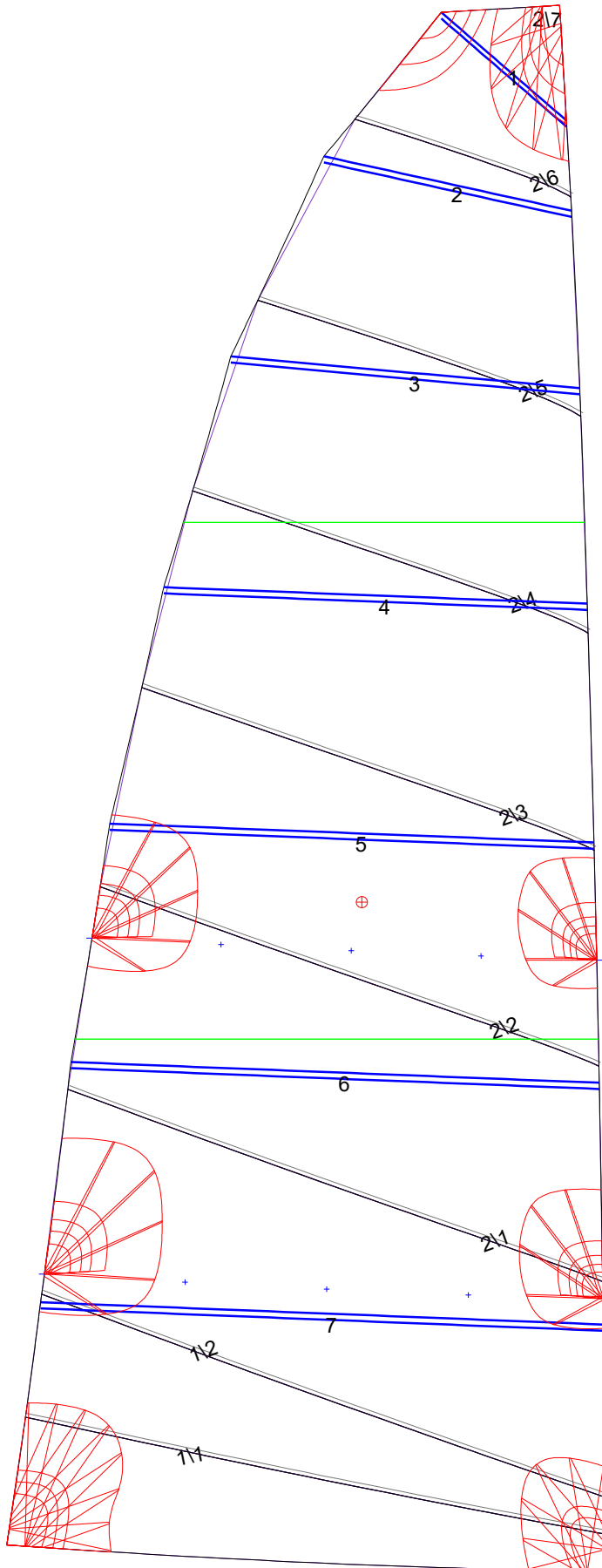
Draft Stripes

- 1, Luff: 11.320Ft ; Leech: 10.883Ft ;
- 2, Luff: 22.315Ft ; Leech: 22.107Ft ;

Luff Curve

		Fanned Luff (@ 5.00% [0.638Ft])	Before BSeam
33.328Ft,	0.000Ft	100% (33.330Ft) :	-0.000Ft
29.175Ft,	-0.120Ft	90% (30.000Ft) :	0.049Ft
24.996Ft,	-0.190Ft	80% (26.664Ft) :	0.099Ft
20.807Ft,	-0.211Ft	70% (23.332Ft) :	0.122Ft
16.664Ft,	-0.209Ft	60% (19.998Ft) :	0.128Ft
12.418Ft,	-0.186Ft	50% (16.665Ft) :	0.125Ft
8.332Ft,	-0.143Ft	40% (13.332Ft) :	0.113Ft
4.153Ft,	-0.079Ft	30% (9.999Ft) :	0.093Ft
0.000Ft,	0.000Ft	20% (6.665Ft) :	0.064Ft
		10% (3.334Ft) :	0.030Ft
		0% (0.000Ft) :	0.000Ft

Mainsail: 7000419 William-1 F27 square top mainV1.des



Seam Allowances

	Split	Radial	Cross
Zone: 1	0.085Ft	0.085Ft	0.085Ft
Zone: 2	0.085Ft	0.085Ft	0.085Ft

Edge Excesses

Sail:	Luff	Leech	Foot
	0.000Ft	0.000Ft	0.000Ft

Total Seam Lengths (Ft)

Horizontal	82.16
Radial/Vertical	0.00
Bi-Radial Split	0.00

Materials

Material	Area (Ft ²)	Panels
Material 1	318.83	1\1,1\2,2\1,2\2,2\3 2\4,2\5,2\6,2\7