

Mainsail: 7000419 William-1 F27 square top main.des

Design Info
=====

Design File:
\\NAS\Engineering files\Queenie-Customer Order\Fareast Sails\2023 Order\Need Confrim Order\7000419 William\700

Initial Design Date: 27/4/2023
Boat:

Comments:

Client:

Design Data
=====

Main

Measurements

Luff geodesic:	33.330Ft
Leech geodesic:	35.000Ft
Foot geodesic:	12.798Ft
Head geodesic:	2.582Ft
Upper width (MUW):	4.541Ft
Three-quarter width (MTW):	7.266Ft
Half width (MHW):	10.110Ft
Quarter width (MQW):	11.696Ft
Foot median:	33.700Ft
ORC Mainsail area:	304.717Ft?
Surface area:	319.655Ft?
Clew height:	0.559Ft
Mast rake:	0.984Ft

Battens

Position	Length	Roach	Angle	Luff	Leech	Full
100.000%	3.333Ft	0.000Ft	109.608?	31.262Ft	34.804Ft	Full
91.745%	5.274Ft	1.609Ft	80.129?	30.123Ft	31.931Ft	Full
79.149%	7.601Ft	2.365Ft	77.918?	26.064Ft	27.547Ft	Full
64.817%	9.194Ft	2.387Ft	76.542?	21.448Ft	22.559Ft	Full
49.593%	10.454Ft	2.104Ft	76.542?	16.420Ft	17.260Ft	Full
33.166%	11.416Ft	1.499Ft	76.542?	10.996Ft	11.543Ft	Full
16.037%	12.145Ft	0.715Ft	76.542?	5.342Ft	5.581Ft	Full

Reefing Points

- 1, Luff: 5.800Ft ; Leech: 5.835Ft ; Offset: 0.000Ft ; Number Eyelets: 3
- 2, Luff: 13.000Ft ; Leech: 13.075Ft ; Offset: 0.000Ft ; Number Eyelets: 3

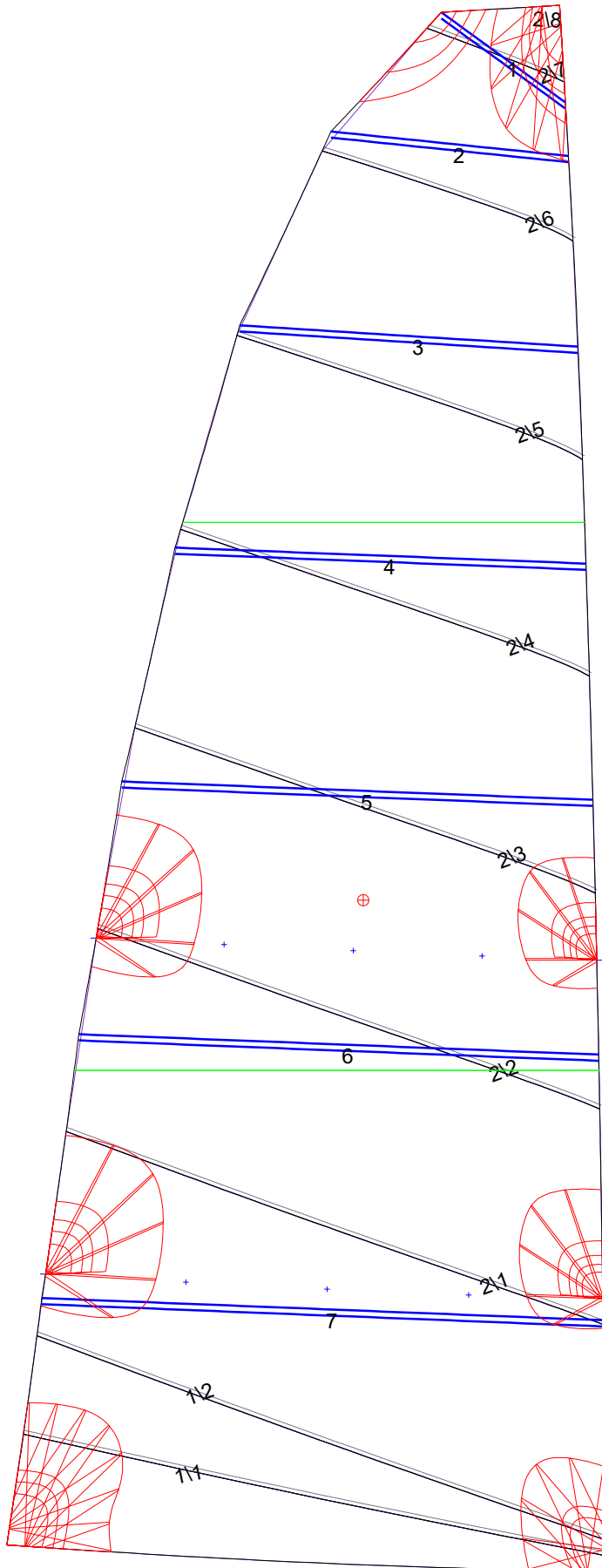
Draft Stripes

- 1, Luff: 10.654Ft ; Leech: 10.220Ft ;
- 2, Luff: 22.315Ft ; Leech: 22.104Ft ;

Luff Curve

		Fanned Luff (@ 5.00% [0.638Ft])	Before BSeam
33.328Ft,	0.000Ft	100% (33.330Ft) :	-0.000Ft
29.175Ft,	-0.120Ft	90% (30.000Ft) :	0.205Ft
24.996Ft,	-0.190Ft	80% (26.664Ft) :	0.394Ft
20.807Ft,	-0.211Ft	70% (23.332Ft) :	0.481Ft
16.664Ft,	-0.209Ft	60% (19.998Ft) :	0.490Ft
12.418Ft,	-0.186Ft	50% (16.665Ft) :	0.475Ft
8.332Ft,	-0.143Ft	40% (13.332Ft) :	0.429Ft
4.153Ft,	-0.079Ft	30% (9.999Ft) :	0.351Ft
0.000Ft,	0.000Ft	20% (6.665Ft) :	0.244Ft
		10% (3.334Ft) :	0.121Ft
		0% (0.000Ft) :	0.000Ft

Mainsail: 7000419 William-1 F27 square top main.des



Seam Allowances

	Split	Radial	Cross
Zone: 1	0.085Ft	0.085Ft	0.085Ft
Zone: 2	0.085Ft	0.085Ft	0.085Ft

Edge Excesses

Sail:	Luff	Leech	Foot
	0.000Ft	0.000Ft	0.000Ft

Total Seam Lengths (Ft)

Horizontal	87.43
Radial/Vertical	0.00
Bi-Radial Split	0.00

Materials

Material	Area (Ft ²)	Panels
Material 1	319.23	1\1,1\2,2\1,2\2,2\3 2\4,2\5,2\6,2\7,2\8