

# Genoa: 7000410 Michael jib hanks.des

Design Info  
=====

Design File:  
\\Nas\工程部-专用文件\Queenie-跟进客户\Fareast Sails\2023 Order\Need Confrim Order\7000410 Michael\7000410 M

Initial Design Date: 6/12/2010  
Boat:

Comments:

Client:

Design Data  
=====

Genoa

## Measurements

Luff geodesic:	11.950m
Leech geodesic:	11.150m
Foot geodesic:	3.600m
Headboard width:	0.050m
Luff perpendicular (HLP):	3.347m
Upper width (HUW):	0.356m
Three-quarter width (HTW):	0.683m
Half width (HHW):	1.468m
Quarter width (HQW):	2.373m
Foot median:	11.451m
ORC Headsail area:	18.718m?
IRC Headsail area:	18.639m?
Surface area:	18.617m?
Forestay height:	11.960m
J:	3.340m

## Draft Stripes

1, Luff: 3.961m ; Leech: 3.525m ;  
2, Luff: 7.916m ; Leech: 7.267m ;

## Luff Slides

1, Position: 0.500m  
2, Position: 1.293m  
3, Position: 2.086m  
4, Position: 2.879m  
5, Position: 3.671m  
6, Position: 4.464m  
7, Position: 5.257m  
8, Position: 6.050m  
9, Position: 6.843m  
10, Position: 7.636m  
11, Position: 8.429m  
12, Position: 9.221m  
13, Position: 10.014m  
14, Position: 10.807m  
15, Position: 11.600m

## Luff Curve

11.948m,	0.000m
10.955m,	0.038m
9.857m,	0.068m
8.891m,	0.084m
7.767m,	0.090m
5.946m,	0.079m
3.883m,	0.053m
2.020m,	0.027m
0.000m,	0.000m

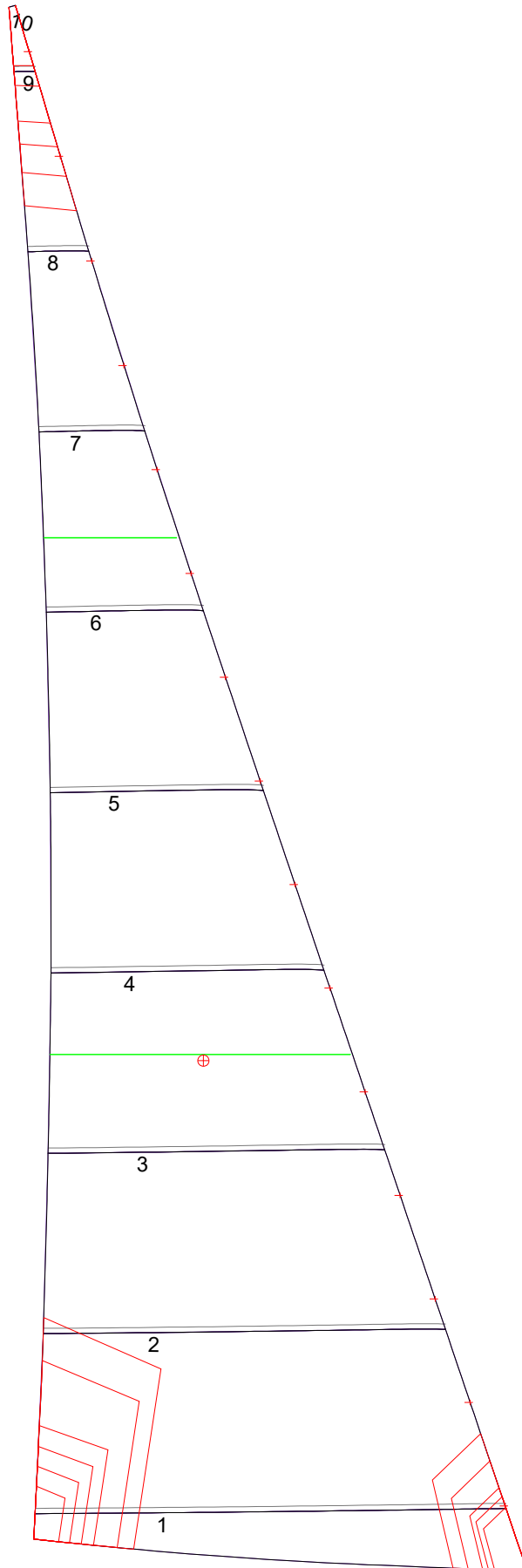
## Fanned Luff (@ 5.00% [0.179m])

100% (11.948m) :	-0.000m
90% (10.752m) :	-0.039m
80% (9.561m) :	-0.073m
70% (8.364m) :	-0.087m
60% (7.170m) :	-0.087m
50% (5.974m) :	-0.078m
40% (4.780m) :	-0.064m
30% (3.584m) :	-0.048m
20% (2.390m) :	-0.032m
10% (1.194m) :	-0.017m
0% (0.000m) :	0.000m

## Before BSeam

0.000m
-0.028m
-0.051m
-0.058m
-0.052m
-0.040m
-0.026m
-0.015m
-0.007m
-0.002m
0.000m

# Genoa: 7000410 Michael jib hanks.des



Seam Allowances			
Zone: 1	Split	Radial	Cross
	0.038m	0.038m	0.038m

Edge Excesses			
Sail:	Luff	Leech	Foot
	0.000m	0.000m	0.000m

## Total Seam Lengths (m)

Horizontal	15.08
Radial/Vertical	0.00
Bi-Radial Split	0.00

## Materials

Material	Area (m <sup>2</sup> )	Panels
Material 1	18.66	1,2,3,4,5 6,7,8,9,10