

Mainsail: 7000409 Johannes Mainsail.des

Design Info

=====

Design File:

\\NAS\Engineering files\Queenie-Customer Order\Fareast Sails\2023 Order\Need Confrim Order\7000409 Johannes\7000409 Johannes

Initial Design Date: 27/4/2023

Boat:

Comments:

Client:

Design Data

=====

Main

Measurements

Luff geodesic:	9.900m
Leech geodesic:	10.460m
Foot geodesic:	3.663m
Head geodesic:	0.115m
Upper width (MUW):	0.711m
Three-quarter width (MTW):	1.304m
Half width (MHW):	2.290m
Quarter width (MQW):	3.048m
Foot median:	10.160m
ORC Mainsail area:	21.115m ²
Surface area:	21.722m ²
Clew height:	0.100m
Mast rake:	0.000m

Battens

Position	Length	Roach	Angle	Luff	Leech	Full
80.000%	1.139m	0.232m	71.739?	7.914m	8.336m	Full
60.000%	1.980m	0.301m	71.739?	5.934m	6.252m	Full
40.000%	2.655m	0.266m	71.739?	3.954m	4.168m	Full
20.000%	3.194m	0.153m	71.739?	1.975m	2.084m	Full

Reefing Points

- 1, Luff: 1.435m ; Leech: 1.490m ; Offset: 0.000m ; Number Eyelets: 2
- 2, Luff: 2.821m ; Leech: 2.930m ; Offset: 0.000m ; Number Eyelets: 2
- 3, Luff: 4.305m ; Leech: 4.475m ; Offset: 0.000m ; Number Eyelets: 2

Draft Stripes

- 1, Luff: 3.266m ; Leech: 3.317m ;
- 2, Luff: 6.533m ; Leech: 6.770m ;

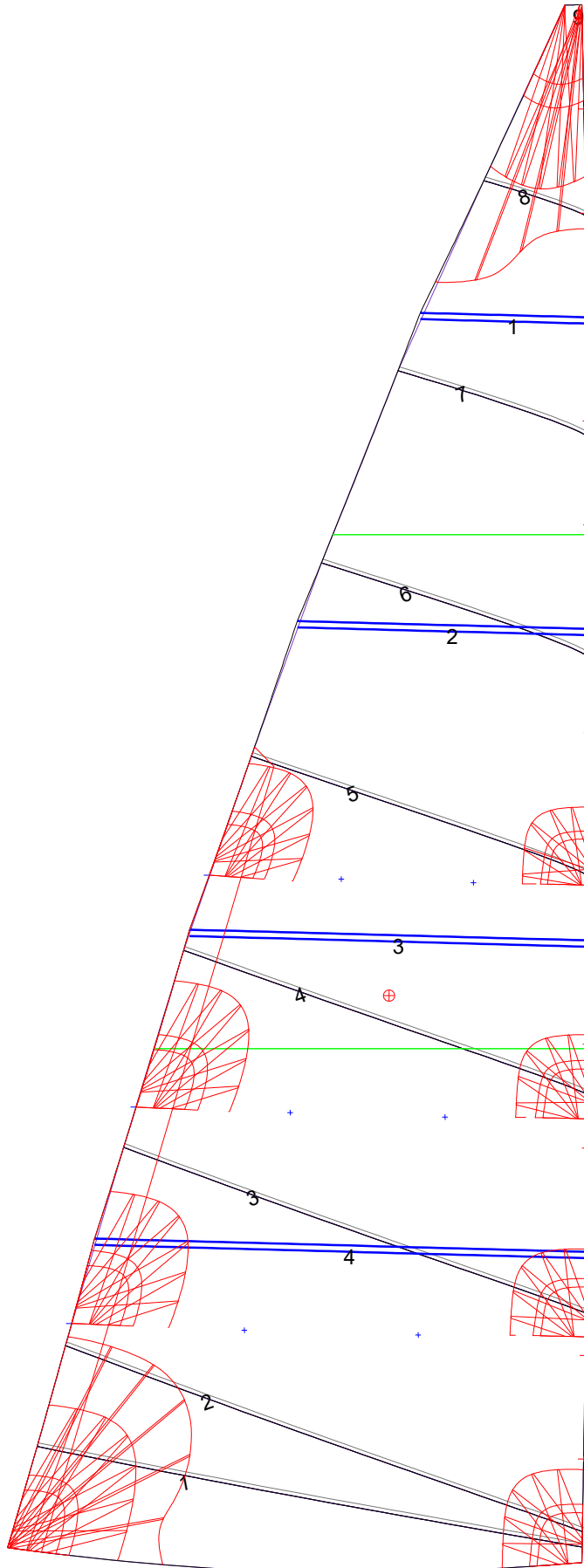
Luff Slides

- 1, Position: 0.658m
- 2, Position: 1.317m
- 3, Position: 2.635m
- 4, Position: 3.294m
- 5, Position: 4.614m
- 6, Position: 5.274m
- 7, Position: 6.594m
- 8, Position: 7.254m
- 9, Position: 8.576m
- 10, Position: 9.238m

Luff Curve

		Fanned Luff (@ 5.00% [0.182m])	Before BSeam
9.900m,	0.000m	100% (9.900m) :	0.000m
8.666m,	-0.023m	90% (8.910m) :	0.012m
7.425m,	-0.039m	80% (7.920m) :	0.023m
6.180m,	-0.046m	70% (6.930m) :	0.030m
4.950m,	-0.047m	60% (5.940m) :	0.032m
3.689m,	-0.044m	50% (4.950m) :	0.031m
2.475m,	-0.035m	40% (3.960m) :	0.028m
1.234m,	-0.020m	30% (2.970m) :	0.023m
0.000m,	0.000m	20% (1.980m) :	0.016m
		10% (0.990m) :	0.008m
		0% (0.000m) :	0.000m

Mainsail: 7000409 Johannes Mainsail.des



Seam Allowances			
Zone: 1	Split	Radial	Cross
	0.025m	0.025m	0.025m

Edge Excesses			
Sail:	Luff	Leech	Foot
	0.000m	0.000m	0.000m

Total Seam Lengths (m)

Horizontal	19.48
Radial/Vertical	0.00
Bi-Radial Split	0.00

Materials

Material	Area (m ²)	Panels
Material 1	21.72	1,2,3,4,5 6,7,8,9