

Genoa: 7000333 Peter Genoa.des

Design Info
=====

Design File:
\\Nas\工程部-专用文件\Queenie-跟进客户\Fareast Sails\2023 Order\Need Confrim Order\7000333 Peter\7000333 Peter

Initial Design Date: 30/3/2023
Boat:

Comments:

Client:

Design Data
=====

Genoa

Measurements

| | |
|----------------------------|------------|
| Luff geodesic: | 34.186Ft |
| Leech geodesic: | 31.168Ft |
| Foot geodesic: | 13.189Ft |
| Headboard width: | 0.125Ft |
| Luff perpendicular (HLP): | 12.070Ft |
| Upper width (HUW): | 1.362Ft |
| Three-quarter width (HTW): | 2.663Ft |
| Half width (HHW): | 5.525Ft |
| Quarter width (HQW): | 8.690Ft |
| Foot median: | 32.439Ft |
| ORC Headsail area: | 197.280Ft? |
| IRC Headsail area: | 196.882Ft? |
| Surface area: | 198.778Ft? |
| Forestay height: | 35.433Ft |
| J: | 10.171Ft |

Draft Stripes

1, Luff: 11.329Ft ; Leech: 8.974Ft ;
2, Luff: 22.639Ft ; Leech: 19.867Ft ;

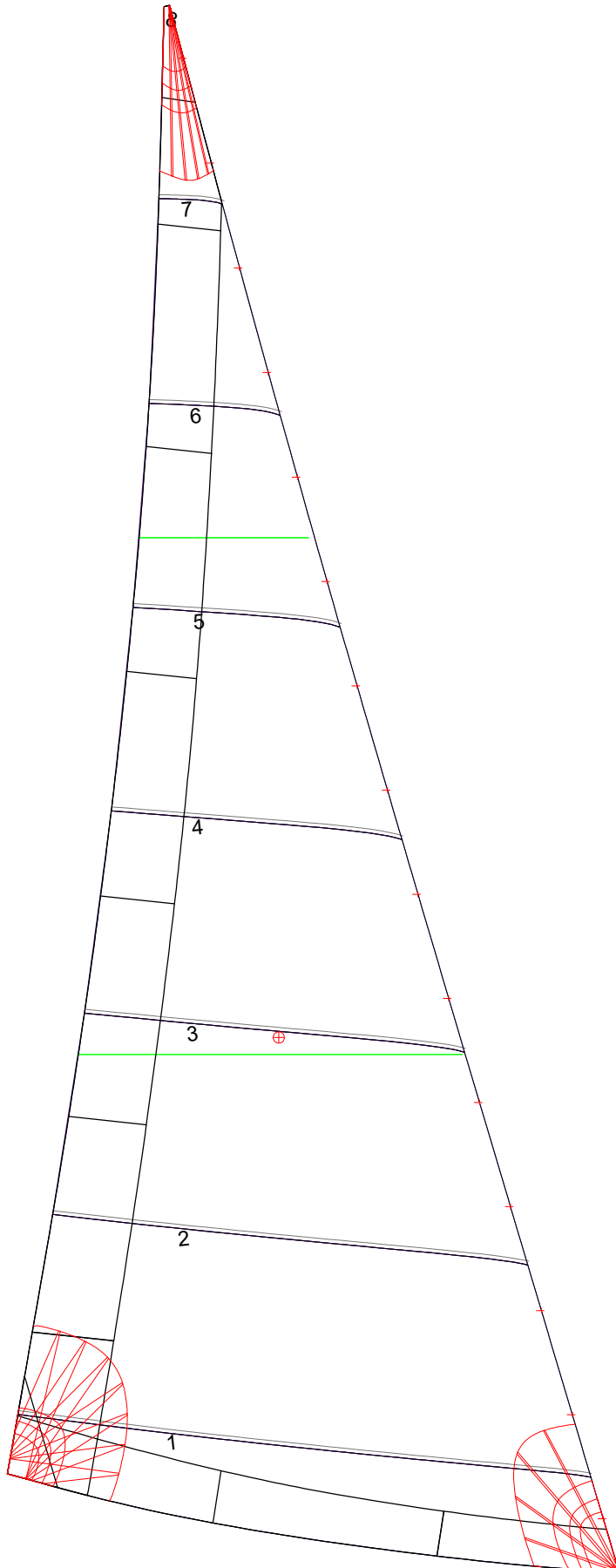
Luff Slides

1, Position: 1.148Ft
2, Position: 3.426Ft
3, Position: 5.704Ft
4, Position: 7.982Ft
5, Position: 10.260Ft
6, Position: 12.537Ft
7, Position: 14.815Ft
8, Position: 17.093Ft
9, Position: 19.371Ft
10, Position: 21.649Ft
11, Position: 23.927Ft
12, Position: 26.205Ft
13, Position: 28.482Ft
14, Position: 30.760Ft
15, Position: 33.038Ft

Luff Curve

| | | Fanned Luff (@ 5.00% [0.642Ft]) | Before BSeam |
|-----------|---------|---------------------------------|-------------------|
| 34.179Ft, | 0.000Ft | 100% (34.180Ft) : | -0.000Ft 0.000Ft |
| 31.339Ft, | 0.116Ft | 90% (30.764Ft) : | -0.129Ft -0.023Ft |
| 28.198Ft, | 0.209Ft | 80% (27.347Ft) : | -0.222Ft -0.025Ft |
| 25.433Ft, | 0.257Ft | 70% (23.928Ft) : | -0.268Ft -0.014Ft |
| 22.217Ft, | 0.276Ft | 60% (20.510Ft) : | -0.273Ft 0.006Ft |
| 17.009Ft, | 0.242Ft | 50% (17.091Ft) : | -0.249Ft 0.029Ft |
| 11.108Ft, | 0.164Ft | 40% (13.673Ft) : | -0.207Ft 0.047Ft |
| 5.777Ft, | 0.082Ft | 30% (10.254Ft) : | -0.156Ft 0.053Ft |
| 0.000Ft, | 0.000Ft | 20% (6.837Ft) : | -0.102Ft 0.053Ft |
| | | 10% (3.417Ft) : | -0.050Ft 0.039Ft |
| | | 0% (0.000Ft) : | 0.000Ft 0.000Ft |

Genoa: 7000333 Peter Genoa.des



Seam Allowances

| Zone: | Split | Radial | Cross |
|---------|---------|---------|---------|
| Zone: 1 | 0.000Ft | 0.000Ft | 0.082Ft |
| Cover 1 | 0.082Ft | 0.082Ft | 0.082Ft |
| Cover 2 | 0.082Ft | 0.082Ft | 0.082Ft |
| Cover 3 | 0.000Ft | 0.000Ft | 0.000Ft |
| Cover 4 | 0.000Ft | 0.000Ft | 0.000Ft |

Edge Excesses

| Sail: | Luff | Leech | Foot |
|---------|---------|---------|---------|
| Sail: | 0.000Ft | 0.000Ft | 0.000Ft |
| Cover 0 | 0.230Ft | 0.328Ft | 0.230Ft |
| Cover 1 | 0.230Ft | 0.230Ft | 0.230Ft |
| Cover 2 | 0.000Ft | 0.230Ft | 0.230Ft |
| Cover 3 | 0.000Ft | 0.230Ft | 0.230Ft |

Total Seam Lengths (Ft)

| | |
|-----------------|-------|
| Horizontal | 46.89 |
| Radial/Vertical | 0.00 |
| Bi-Radial Split | 0.00 |

Materials

| Material | Area (Ft ²) | Panels |
|------------|-------------------------|--------------------|
| Material 1 | 199.41 | 1,2,3,4,5 6,7,8 |